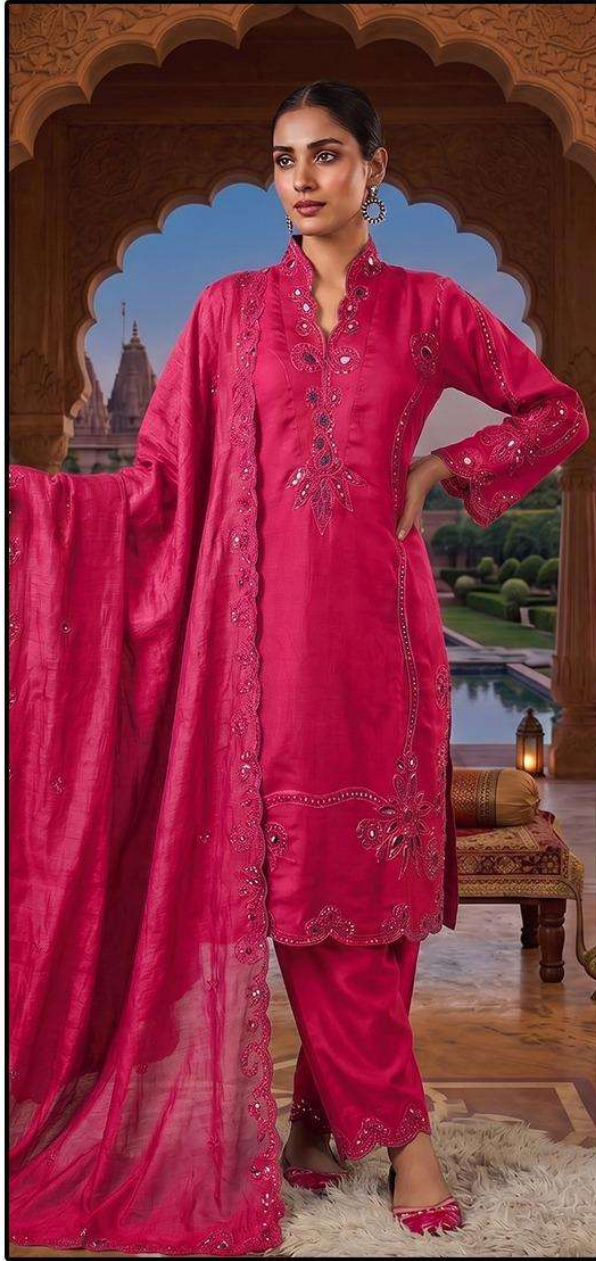


HT

HOOR TEX

HF-815



HF-815 D

Top :- Cristal Viscous

Bottom :- Cristal Viscous

Dupatta :- Heavy Checks



HOOR TEX

CARE INSTRUCTIONS

DRY CLEAN RECOMMENDED

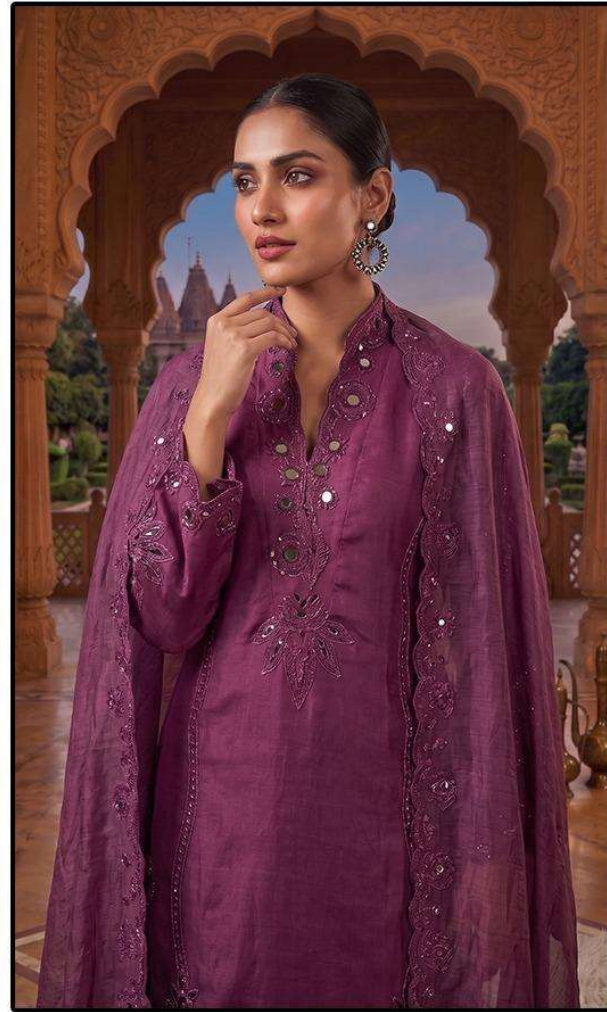
DO NOT USE ANY TYPE OF BLEACH OR STAIN REMOVING CHEMICALS

DO NOT OVER EXPOSE DAMP FABRIC TO STRONG SUNLIGHT

IRON AT MODERATE TEMPERATURE



HF-815



HF-815 A

Top :- Cristal Viscous

Bottom :- Cristal Viscous

Dupatta :- Heavy Checks



HOOR TEX

CARE INSTRUCTIONS

DRY CLEAN RECOMMENDED
DO NOT USE ANY TYPE OF BLEACH OR STAIN REMOVING CHEMICALS
DO NOT OVER EXPOSE DAMP FABRIC TO STRONG SUNLIGHT
IRON AT MODERATE TEMPERATURE



HF-815



HF-815 B

Top :- Cristal Viscous

Bottom :- Cristal Viscous

Dupatta :- Heavy Checks



HOOR TEX

CARE INSTRUCTIONS

DRY CLEAN RECOMMENDED

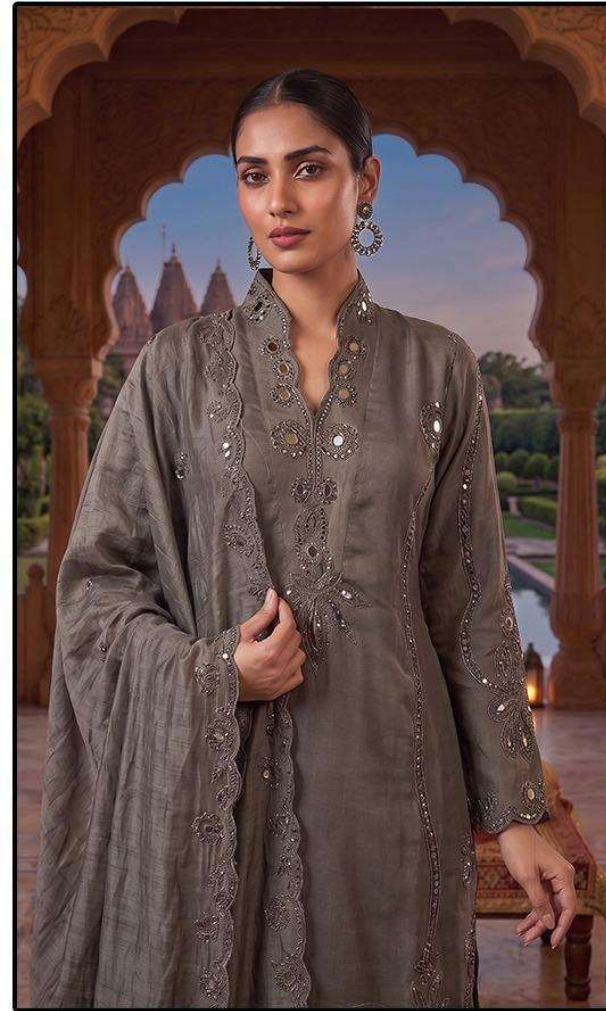
DO NOT USE ANY TYPE OF BLEACH OR STAIN REMOVING CHEMICALS

DO NOT OVER EXPOSE DAMP FABRIC TO STRONG SUNLIGHT

IRON AT MODERATE TEMPERATURE



HF-815



HF-815 C

Top :- Cristal Viscous

Bottom :- Cristal Viscous

Dupatta :- Heavy Checks



HOOR TEX

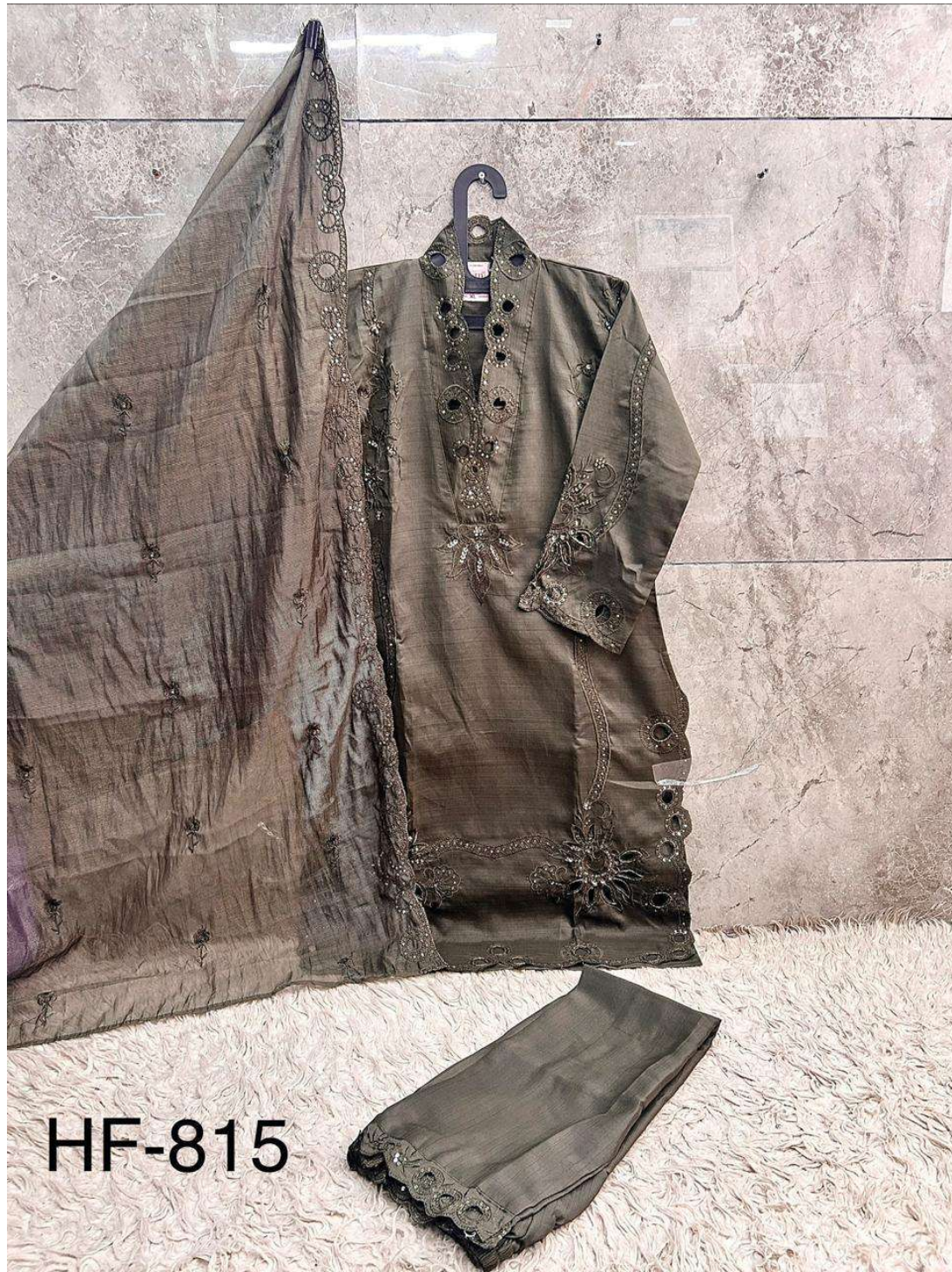
CARE INSTRUCTIONS

DRY CLEAN RECOMMENDED

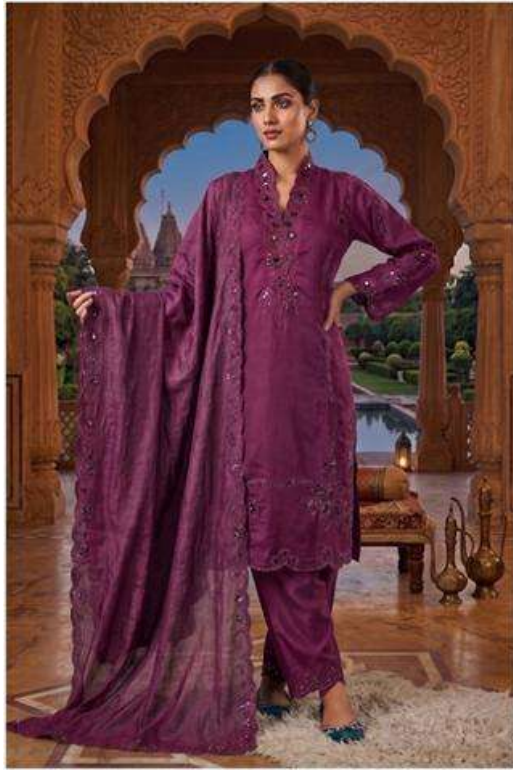
DO NOT USE ANY TYPE OF BLEACH OR STAIN REMOVING CHEMICALS

DO NOT OVER EXPOSE DAMP FABRIC TO STRONG SUNLIGHT

IRON AT MODERATE TEMPERATURE



HF-815



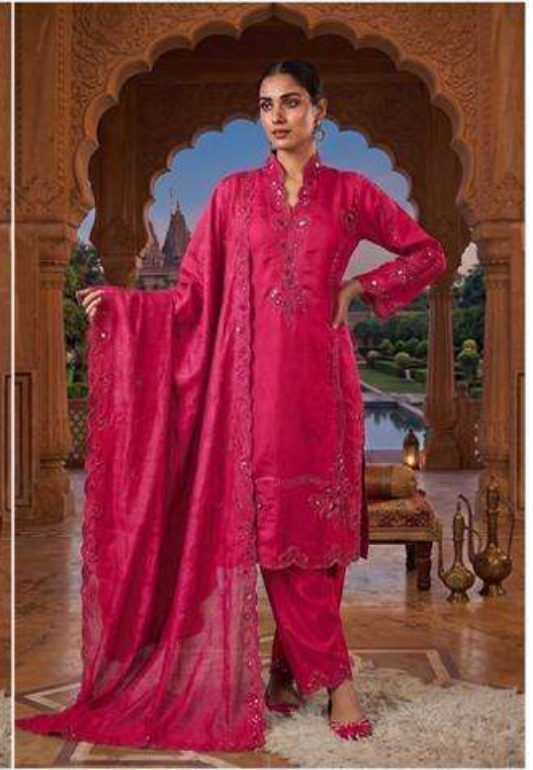
HF-815 A



HF-815 B



HF-815 C



HF-815 D



HOOR TEX