

HT

HOOR TEX

HF-818



*HF-818 D*

*Top :- Heavy Satin*

*Bottom :- Heavy Satin*

*Dupatta :- Importad Checks*

**CARE INSTRUCTIONS**

DRY CLEAN RECOMMENDED

DO NOT USE ANY TYPE OF BLEACH OR STAIN REMOVING CHEMICALS

DO NOT OVER EXPOSE DAMP FABRIC TO STRONG SUNLIGHT

IRON AT MODERATE TEMPERATURE



**HOOR TEX**



HF-818



*HF-818 A*

*Top :- Heavy Satin*

*Bottom :- Heavy Satin*

*Dupatta :- Importad Checks*

**CARE INSTRUCTIONS**

DRY CLEAN RECOMMENDED

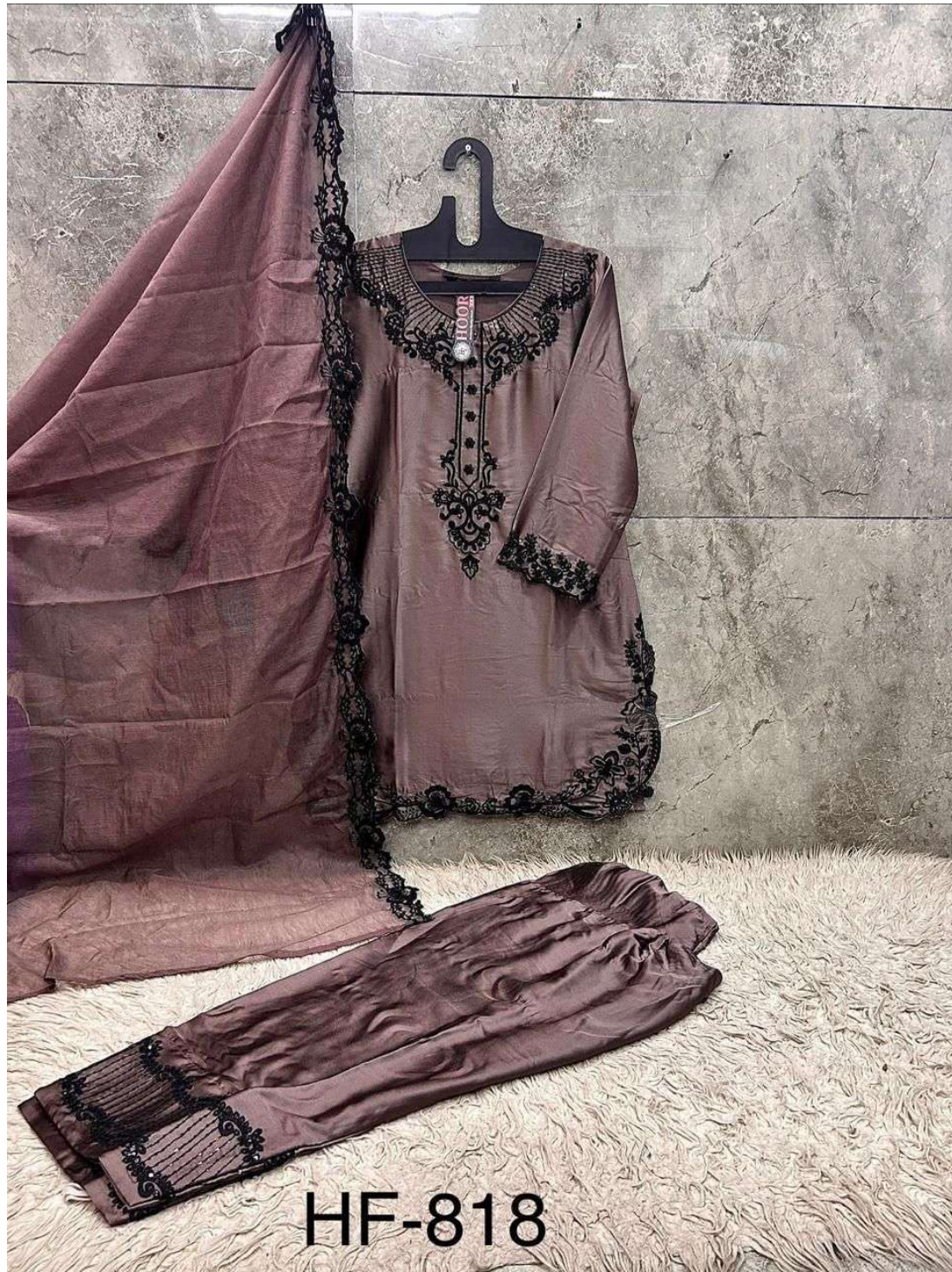
DO NOT USE ANY TYPE OF BLEACH OR STAIN REMOVING CHEMICALS

DO NOT OVER EXPOSE DAMP FABRIC TO STRONG SUNLIGHT

IRON AT MODERATE TEMPERATURE



**HOOR TEX**



HF-818



*HF-818 C*

*Top :- Heavy Satin*

*Bottom :- Heavy Satin*

*Dupatta :- Importad Checks*

**CARE INSTRUCTIONS**

DRY CLEAN RECOMMENDED

DO NOT USE ANY TYPE OF BLEACH OR STAIN REMOVING CHEMICALS

DO NOT OVER EXPOSE DAMP FABRIC TO STRONG SUNLIGHT

IRON AT MODERATE TEMPERATURE



**HOOR TEX**



HF-818



*HF-818 B*

*Top :- Heavy Satin*

*Bottom :- Heavy Satin*

*Dupatta :- Importad Checks*

**CARE INSTRUCTIONS**

DRY CLEAN RECOMMENDED

DO NOT USE ANY TYPE OF BLEACH OR STAIN REMOVING CHEMICALS

DO NOT OVER EXPOSE DAMP FABRIC TO STRONG SUNLIGHT

IRON AT MODERATE TEMPERATURE



**HOOR TEX**



HF-818



HF-818 A



HF-818 B



HF-818 C



HF-818 D



HOOR TEX