

HF-784 A

Top :- Heavy Chiffon

Bottom :- Heavy Soft Viscous

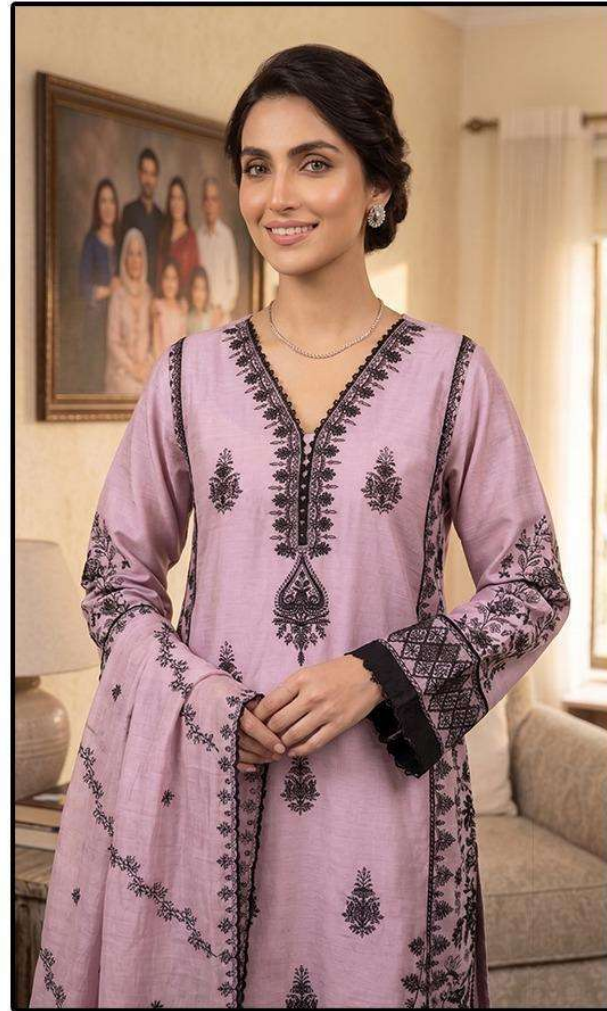
Dupatta :- Heavy Chiffon



HOOR TEX

CARE INSTRUCTIONS

DRY CLEAN RECOMMENDED
DO NOT USE ANY TYPE OF BLEACH OR STAIN REMOVING CHEMICALS
DO NOT OVER EXPOSE DAMP FABRIC TO STRONG SUNLIGHT
IRON AT MODERATE TEMPERATURE



HF-784 B

Top :- Heavy Chiffon

Bottom :- Heavy Soft Viscous

Dupatta :- Heavy Chiffon



HOOR TEX

CARE INSTRUCTIONS

DRY CLEAN RECOMMENDED

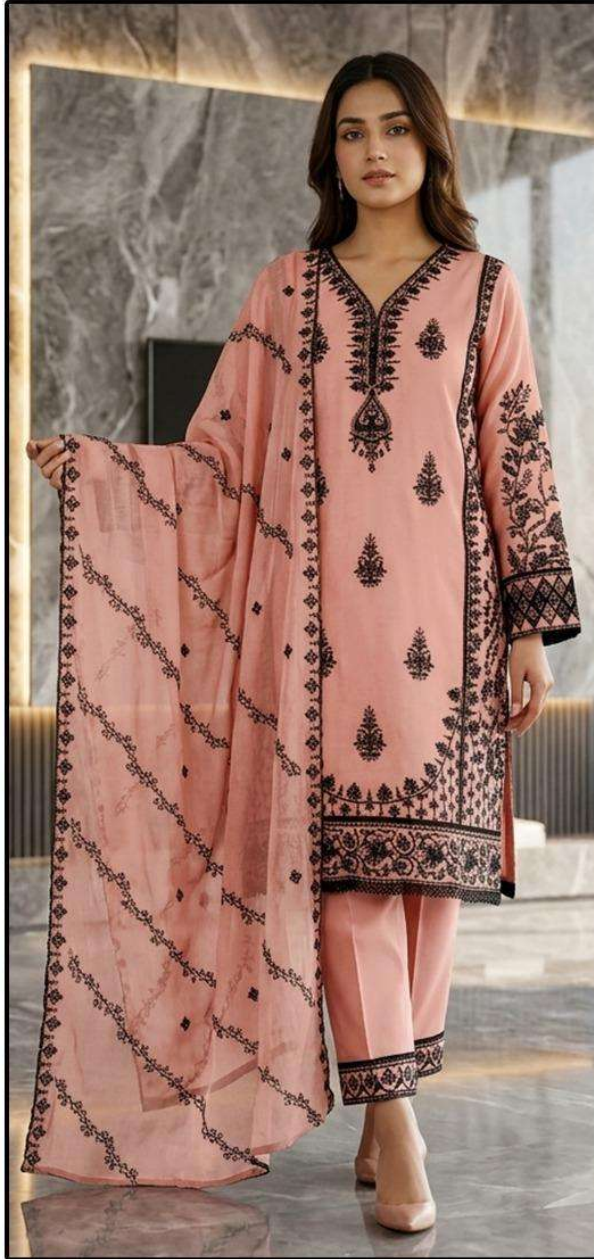
DO NOT USE ANY TYPE OF BLEACH OR STAIN REMOVING CHEMICALS

DO NOT OVER EXPOSE DAMP FABRIC TO STRONG SUNLIGHT

IRON AT MODERATE TEMPERATURE



HF-784



HF-784 A

Top :- Heavy Chiffon

Bottom :- Heavy Soft Viscous

Dupatta :- Heavy Chiffon



HOOR TEX

CARE INSTRUCTIONS

DRY CLEAN RECOMMENDED

DO NOT USE ANY TYPE OF BLEACH OR STAIN REMOVING CHEMICALS

DO NOT OVER EXPOSE DAMP FABRIC TO STRONG SUNLIGHT

IRON AT MODERATE TEMPERATURE



HF-784



HF-784 C

Top :- Heavy Chiffon

Bottom :- Heavy Soft Viscous

Dupatta :- Heavy Chiffon



HOOR TEX

CARE INSTRUCTIONS

DRY CLEAN RECOMMENDED

DO NOT USE ANY TYPE OF BLEACH OR STAIN REMOVING CHEMICALS

DO NOT OVER EXPOSE DAMP FABRIC TO STRONG SUNLIGHT

IRON AT MODERATE TEMPERATURE



HF-784



HF-784 D

Top :- Heavy Chiffon

Bottom :- Heavy Soft Viscous

Dupatta :- Heavy Chiffon



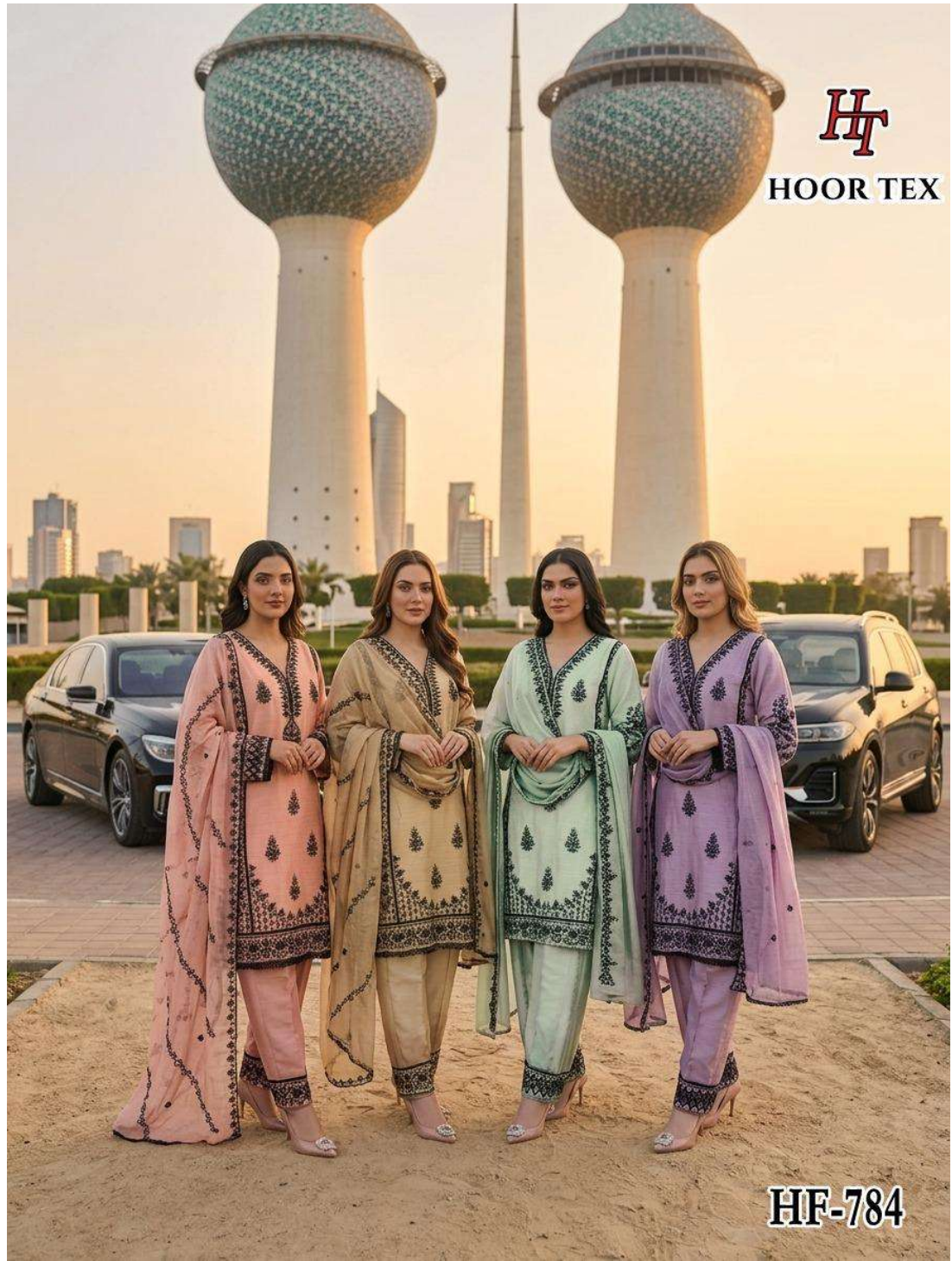
HOOR TEX

CARE INSTRUCTIONS

DRY CLEAN RECOMMENDED
DO NOT USE ANY TYPE OF BLEACH OR STAIN REMOVING CHEMICALS
DO NOT OVER EXPOSE DAMP FABRIC TO STRONG SUNLIGHT
IRON AT MODERATE TEMPERATURE



HF-784



HT

HOOR TEX

HF-784