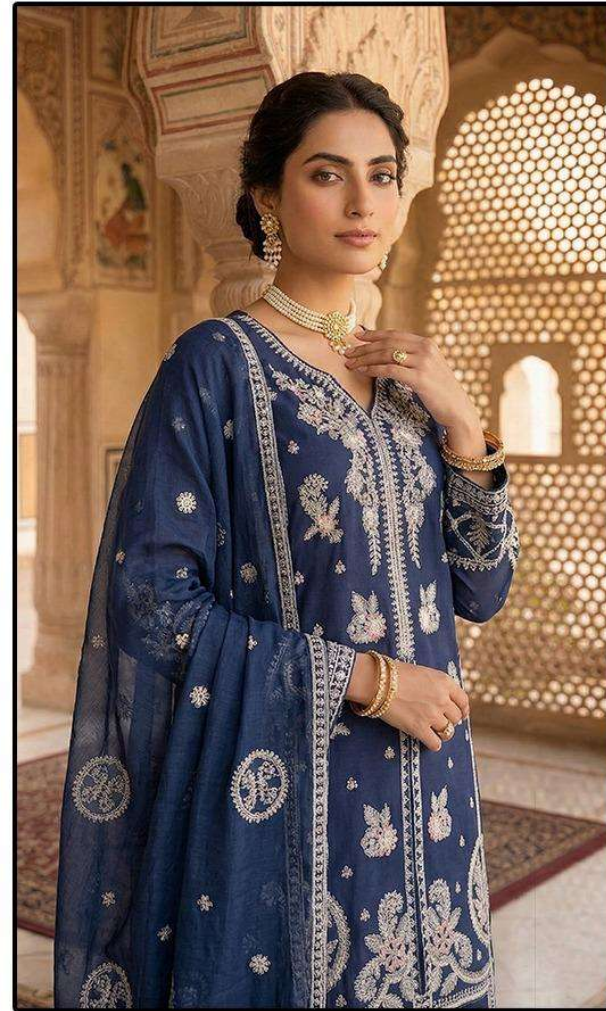




HOOR TEX



HF-686



HF-686 A

Top :- Heavy Chiffon

Bottom :- Soft Viscous

Dupatta :- Heavy Chiffon



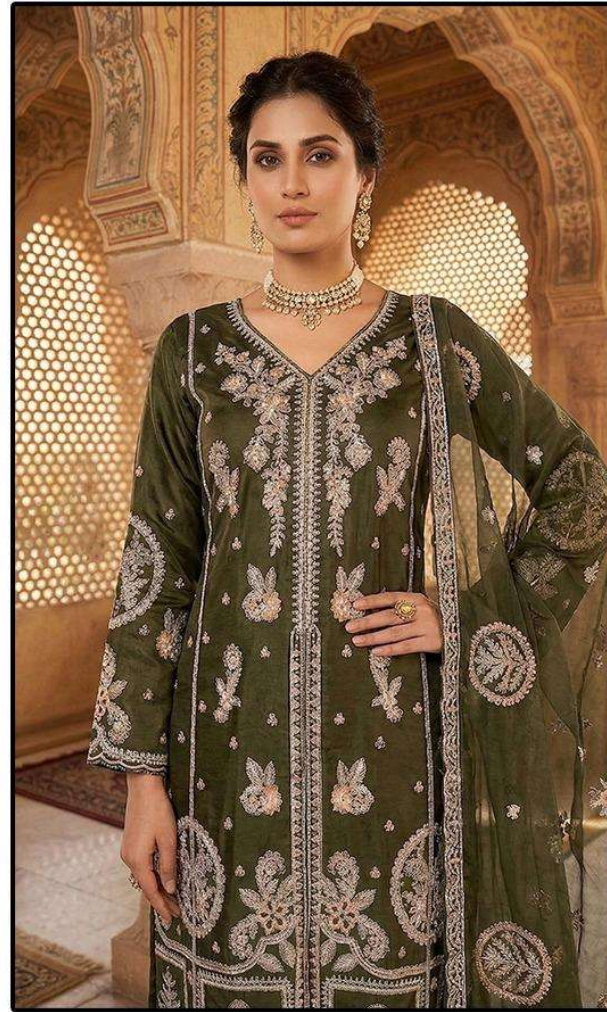
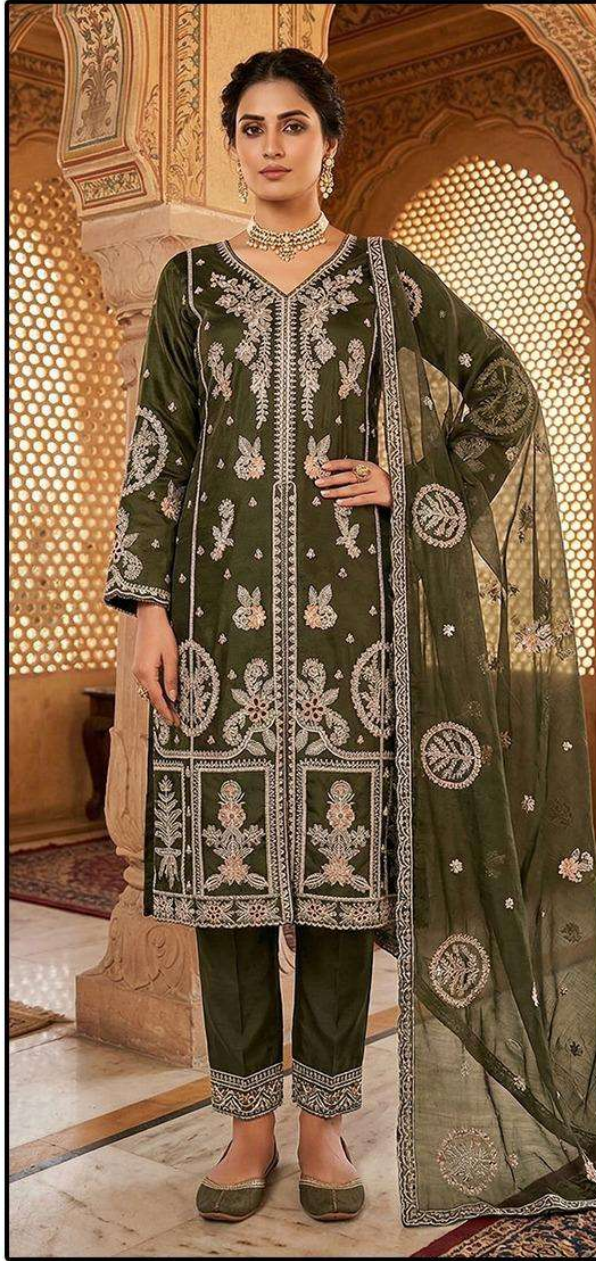
HOOR TEX

CARE INSTRUCTIONS

DRY CLEAN RECOMMENDED
DO NOT USE ANY TYPE OF BLEACH OR STAIN REMOVING CHEMICALS
DO NOT OVER EXPOSE DAMP FABRIC TO STRONG SUNLIGHT
IRON AT MODERATE TEMPERATURE



HF-686



HF-686 B

Top :- Heavy Chiffon

Bottom :- Soft Viscous

Dupatta :- Heavy Chiffon



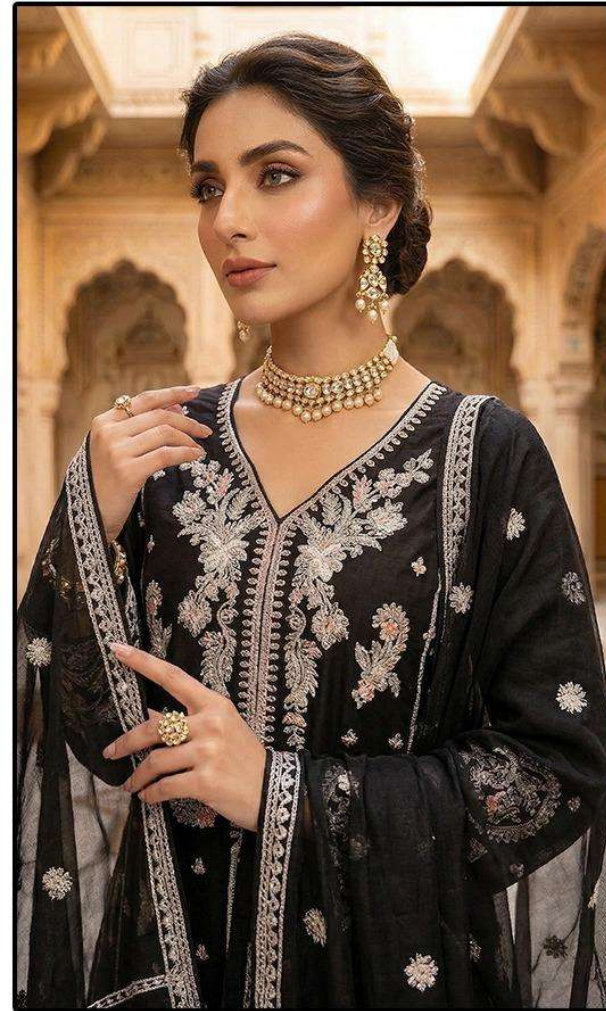
HOOR TEX

CARE INSTRUCTIONS

DRY CLEAN RECOMMENDED
DO NOT USE ANY TYPE OF BLEACH OR STAIN REMOVING CHEMICALS
DO NOT OVER EXPOSE DAMP FABRIC TO STRONG SUNLIGHT
IRON AT MODERATE TEMPERATURE



HF-686



HF-686 C

Top :- Heavy Chiffon

Bottom :- Soft Viscous

Dupatta :- Heavy Chiffon



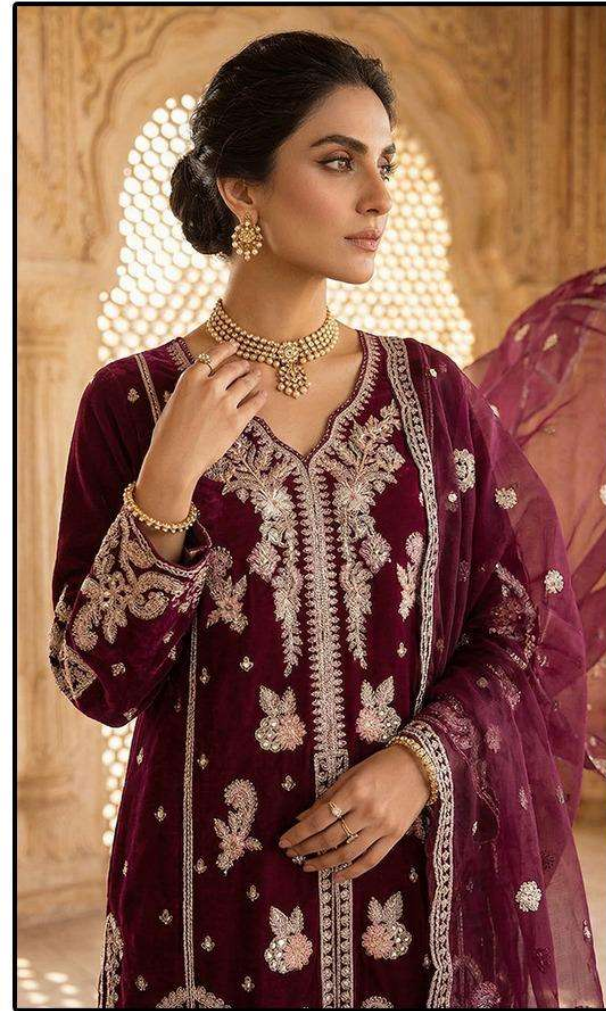
HOOR TEX

CARE INSTRUCTIONS

DRY CLEAN RECOMMENDED
DO NOT USE ANY TYPE OF BLEACH OR STAIN REMOVING CHEMICALS
DO NOT OVER EXPOSE DAMP FABRIC TO STRONG SUNLIGHT
IRON AT MODERATE TEMPERATURE



HF-686



HF-686 D

Top :- Heavy Chiffon
Bottom :- Soft Viscous
Dupatta :- Heavy Chiffon



HOOR TEX

CARE INSTRUCTIONS

DRY CLEAN RECOMMENDED
DO NOT USE ANY TYPE OF BLEACH OR STAIN REMOVING CHEMICALS
DO NOT OVER EXPOSE DAMP FABRIC TO STRONG SUNLIGHT
IRON AT MODERATE TEMPERATURE

