



MARIA.B.  
*Chiffons*

**SF-5535-B**

TOP:- EMBROIDERED HEAVY CHIFFON  
WITH HEAVY HAND KHATLI WORK  
DUPATTA:- CHIFFON EMBROIDERED  
BOTTOM / INNER:- DULL SANTOON

DO NOT USE ANY BLEACH OR RTAN REMOVING CHEMICAL ☒  
IRON THE FABRIC AT MODERATE TEMPERATURE ☒  
DRY CLEAN ONLY ☒

**DISCLAIMER:**  
COLORS MIGHT APPEAR SLIGHTLY DIFFERENT DUE TO  
PHOTOGRAPHIC/LIGHTING EQUIPMENT USED  
SOME ACCESSORIES/EMBELLISHMENTS USED ARE ONLY FOR  
SHOOT PURPOSES AND NOT PART OF THE ACTUAL SUIT



**Shree**  
FABS



MARIA.B.  
*Chiffons*

**SF-5535-I**

TOP:- EMBROIDERED HEAVY CHIFFON  
WITH HEAVY HAND KHATLI WORK  
DUPATTA:- CHIFFON EMBROIDERED  
BOTTOM / INNER:- DULL SANTOON

DO NOT USE ANY BLEACH OR RTAN REMOVING CHEMICAL ☒  
IRON THE FABRIC AT MODERATE TEMPERATURE ☒  
DRY CLEAN ONLY ☒

**DISCLAIMER:**  
COLORS MIGHT APPEAR SLIGHTLY DIFFERENT DUE TO  
PHOTOGRAPHIC/LIGHTING EQUIPMENT USED  
SOME ACCESSORIES/EMBELLISHMENTS USED ARE ONLY FOR  
SHOOT PURPOSES AND NOT PART OF THE ACTUAL SUIT



MARIA.B.  
*Chiffons*

**SF-5535-B**

TOP:- EMBROIDERED HEAVY CHIFFON  
WITH HEAVY HAND KHATLI WORK  
DUPATTA:- CHIFFON EMBROIDERED  
BOTTOM / INNER:- DULL SANTOON

DO NOT USE ANY BLEACH OR RTAN REMOVING CHEMICAL ☒  
IRON THE FABRIC AT MODERATE TEMPERATURE ☒  
DRY CLEAN ONLY ☒

DISCLAIMER:  
COLORS MIGHT APPEAR SLIGHTLY DIFFERENT DUE TO  
PHOTOGRAPHIC/LIGHTING EQUIPMENT USED  
SOME ACCESSORIES/EMBELLISHMENTS USED ARE ONLY FOR  
SHOOT PURPOSES AND NOT PART OF THE ACTUAL SUIT



MARIA.B.  
*Chiffons*

**SF-5535**

TOP:- EMBROIDERED HEAVY CHIFFON  
WITH HEAVY HAND KHATLI WORK  
DUPATTA:- CHIFFON EMBROIDERED  
BOTTOM / INNER:- DULL SANTOON

DO NOT USE ANY BLEACH OR RTAN REMOVING CHEMICAL ☒  
IRON THE FABRIC AT MODERATE TEMPERATURE ☒  
DRY CLEAN ONLY ☒

**DISCLAIMER:**  
COLORS MIGHT APPEAR SLIGHTLY DIFFERENT DUE TO  
PHOTOGRAPHIC/LIGHTING EQUIPMENT USED  
SOME ACCESSORIES/EMBELLISHMENTS USED ARE ONLY FOR  
SHOOT PURPOSES AND NOT PART OF THE ACTUAL SUIT



MARIA.B.  
*Chiffons*

**SF-5535-D**

TOP:- EMBROIDERED HEAVY CHIFFON  
WITH HEAVY HAND KHATLI WORK  
DUPATTA:- CHIFFON EMBROIDERED  
BOTTOM / INNER:- DULL SANTOON

DRY CLEAN ONLY ☒  
DO NOT USE ANY BLEACH OR RTAN REMOVING CHEMICAL ☒  
IRON THE FABRIC AT MODERATE TEMPERATURE ☒

**DISCLAIMER:**  
COLORS MIGHT APPEAR SLIGHTLY DIFFERENT DUE TO  
PHOTOGRAPHIC/LIGHTING EQUIPMENT USED  
SOME ACCESSORIES/EMBELLISHMENTS USED ARE ONLY FOR  
SHOOT PURPOSES AND NOT PART OF THE ACTUAL SUIT



**SF-5535**



**SF-5535-D**

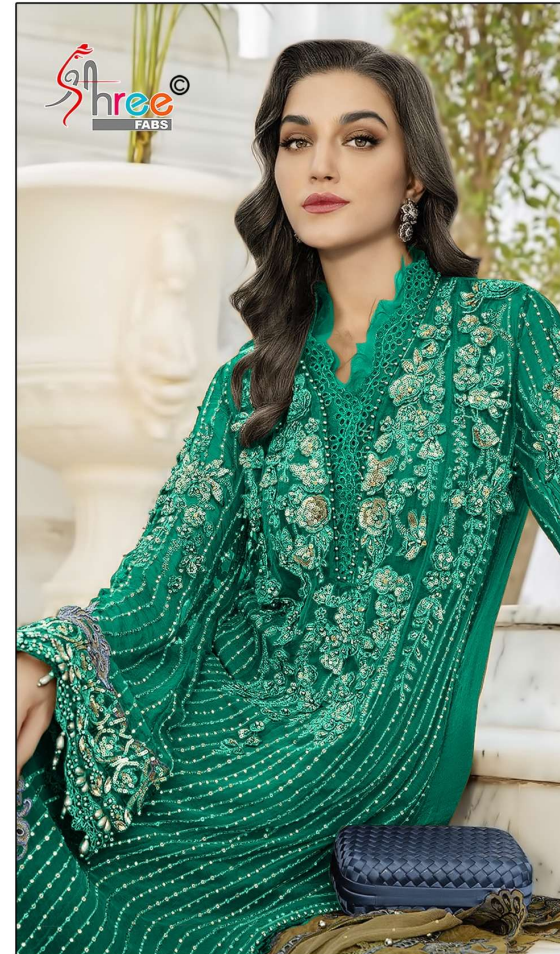


**SF-5535-I**



**SF-5535-B**

MARIA.B.  
*Chiffons*



TOP:- EMBROIDERED HEAVY CHIFFON  
WITH HEAVY HAND KHATLI WORK  
DUPATTA:- CHIFFON EMBROIDERED  
BOTTOM / INNER:- DULL SANTOON