

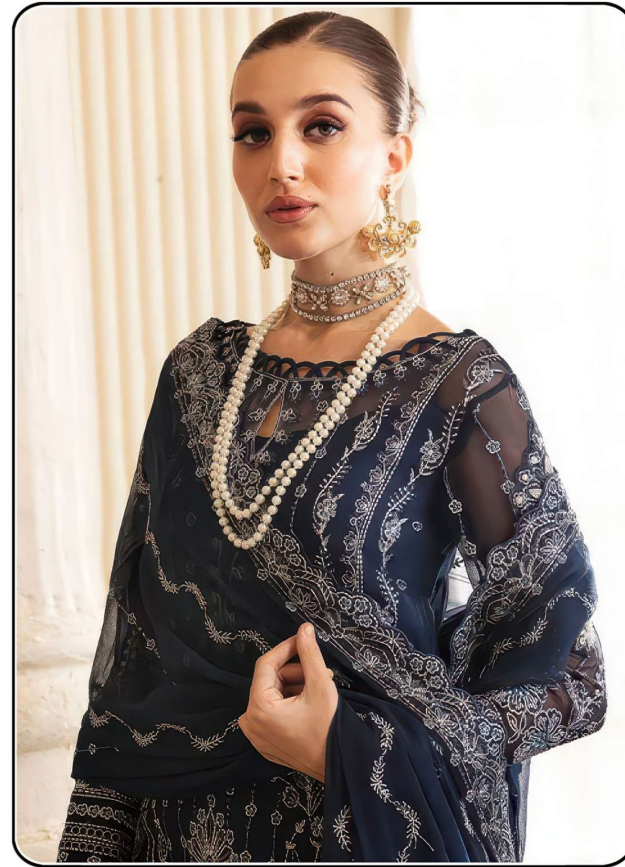
**Sajida**<sup>®</sup>  
DESIGNERS SUIT

**ALAYA-9**



**Sajida**<sup>®</sup>  
DESIGNERS SUIT

## ALAYA-9



### SDS -1136

**TOP** Fox Georgette with  
Heavy Embroidery (cut 2.50)

**BOTTOM-INNER** Dull Santoon (cut 4.25)

**DUPATTA** Fox Georgette with  
Heavy Embroidery (cut 2.50)

#### CARE INSTRUCTIONS

- ☉ Dry clean only
- ✘ Do not use any bleach or stain removing chemical
- ☐ Iron the fabric at moderate temperature
- ☒ Do not dry fabric in direct sunlight



**Sajida**<sup>®</sup>  
DESIGNERS SUIT

**ALAYA-9**



**SDS -1135**

**TOP**

Fox Georgette with  
Heavy Embroidery (cut 2.50)

**BOTTOM-INNER**

Dull Santoon (cut 4.25)

**DUPATTA**

Fox Georgette with  
Heavy Embroidery (cut 2.50)

**CARE INSTRUCTIONS**

- ☉ Dry clean only
- ✘ Do not use any bleach or stain removing chemical
- ☐ Iron the fabric at moderate temperature
- ☒ Do not dry fabric in direct sunlight



**Sajida**<sup>®</sup>  
DESIGNERS SUIT

**ALAYA-9**



**SDS -1093**

**TOP**

Fox Georgette with  
Heavy Embroidery (cut 2.50)

**BOTTOM-INNER**

Dull Santoon (cut 4.25)

**DUPATTA**

Fox Georgette with  
Heavy Embroidery (cut 2.50)

**CARE INSTRUCTIONS**

- ☉ Dry clean only
- ✘ Do not use any bleach or stain removing chemical
- ☐ Iron the fabric at moderate temperature
- ☒ Do not dry fabric in direct sunlight



# ALAYA-9

**TOP** Hevay Fox Georgette embroidery with Khatli work (cut 2.50)  
**BOTTOM-INNER** Dull Santoon (cut 4.25)  
**DUPATTA** Hevay Fox Georgette embroidery work (cut 2.30)

### CARE INSTRUCTIONS

- ☐ Dry clean only
- ☒ Do not use any bleach or stain removing chemical
- ☒ Iron the fabric at moderate temperature
- ☒ Do not dry fabric in direct sunlight



D.No.1093



D.No.1135



D.No.1136