



HF-483 A

HF-483 B

HF-483 C

HF-483 D



HOOR TEX



HF-483 A

HF-483 B

HF-483 C

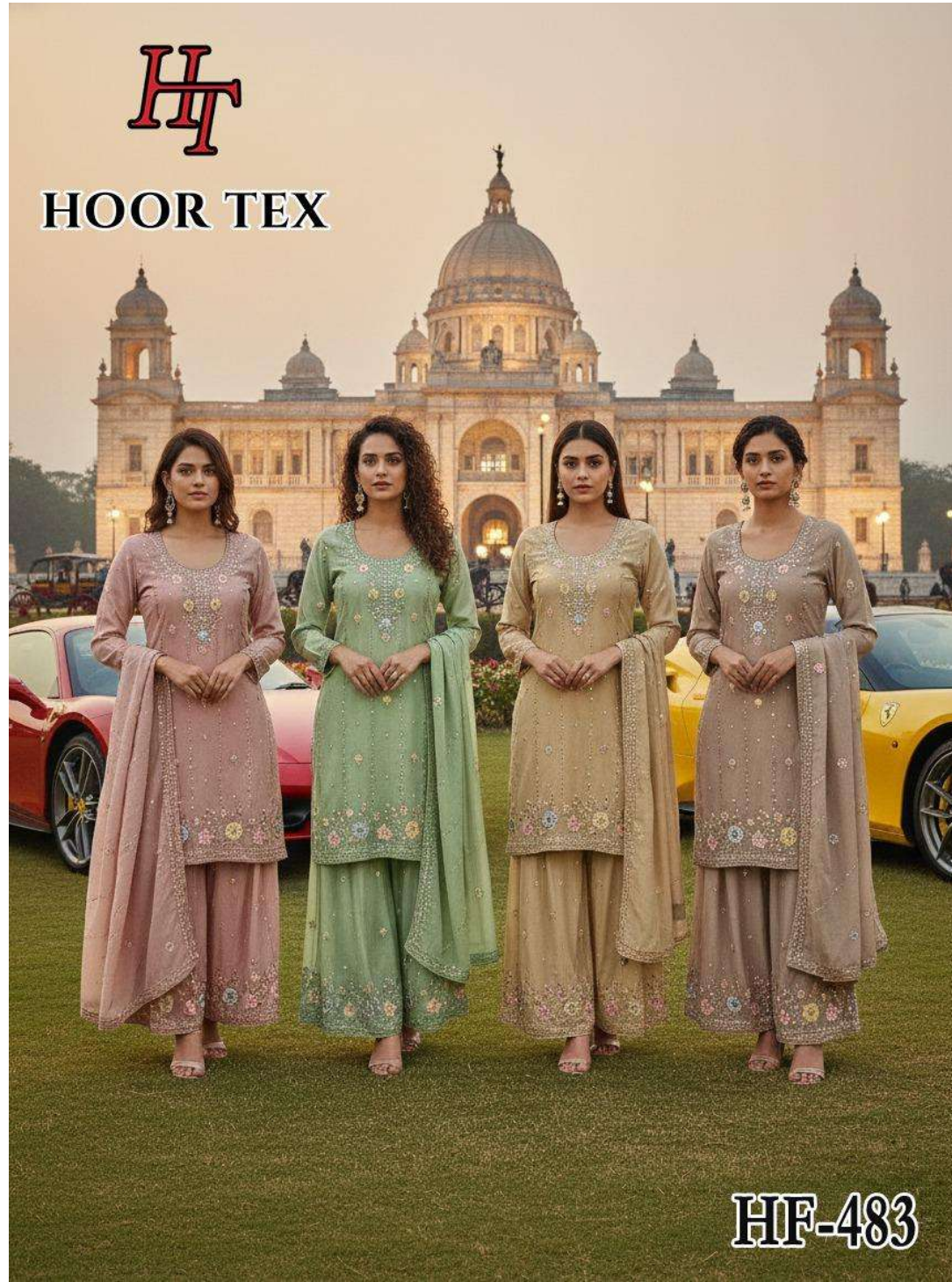
HF-483 D



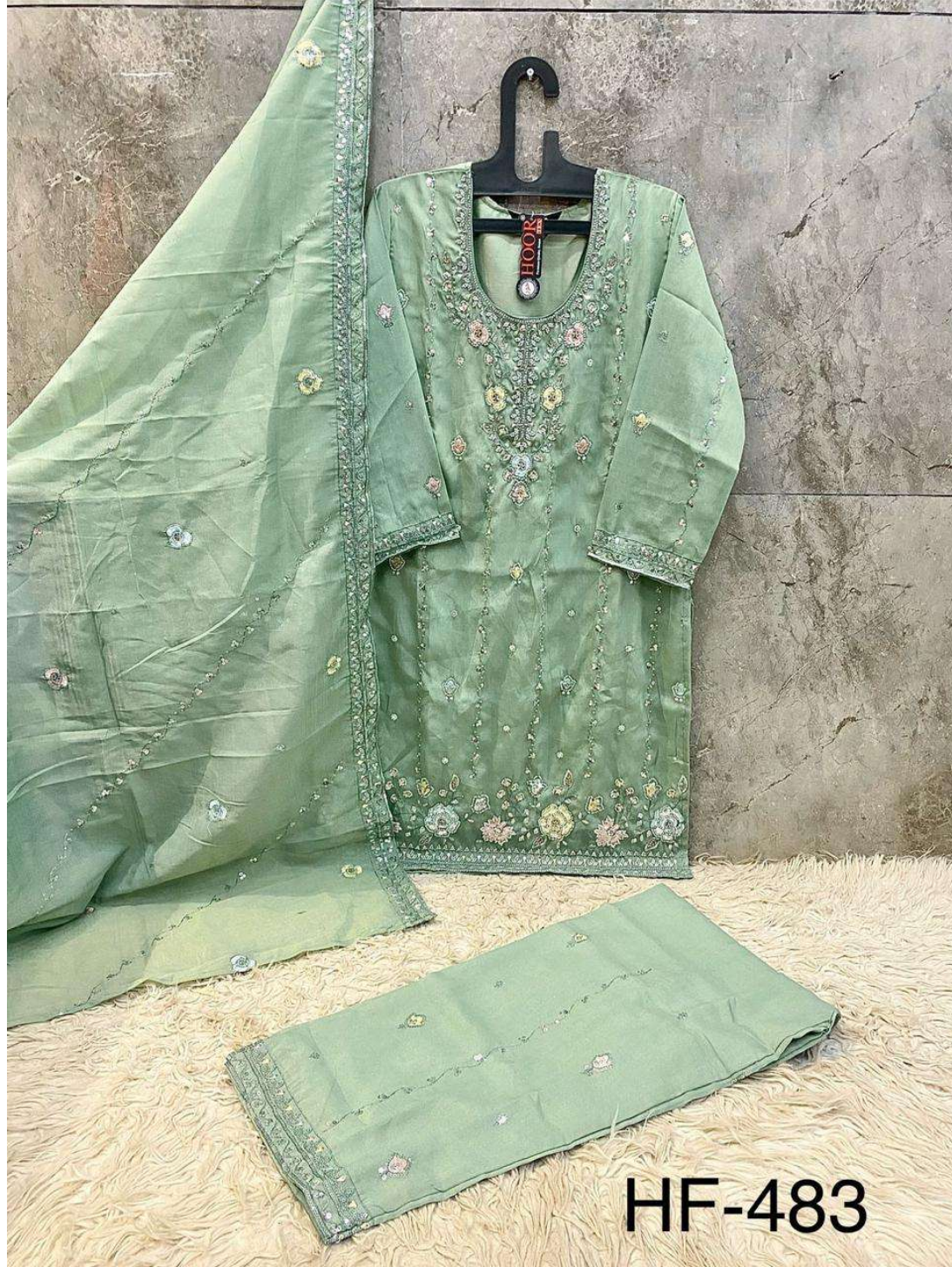
HOOR TEX



HOOR TEX



HF-483



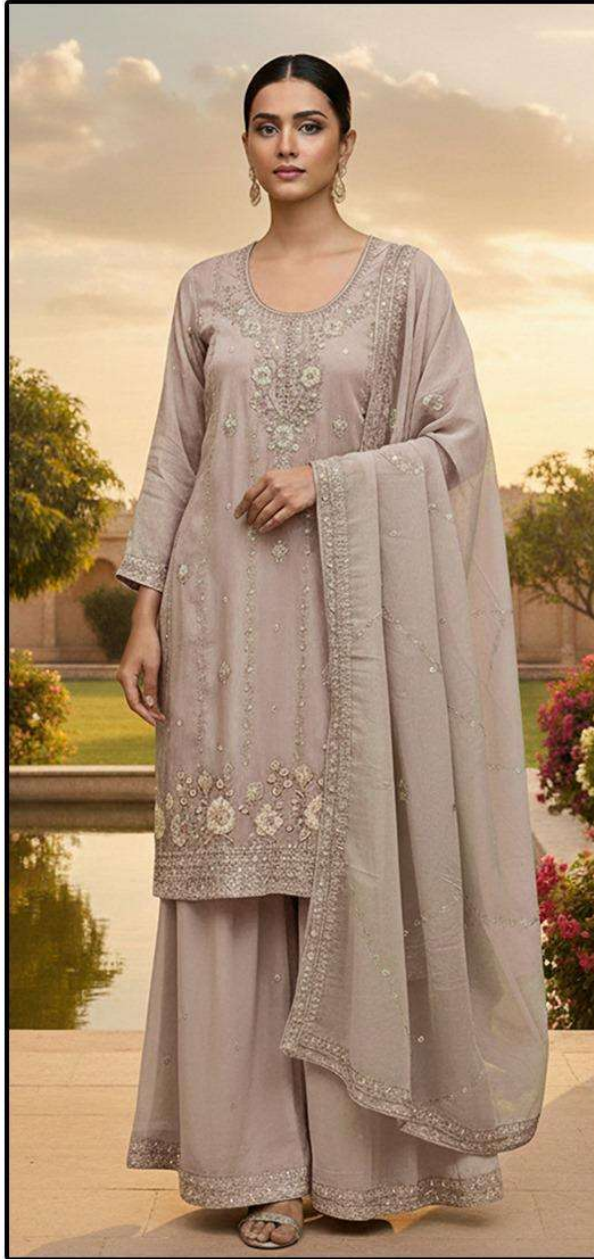
HF-483



HF-483



HF-483



HF-483 D

Top :- Heavy Star Chiffon

Bottom :- Heavy Star Chiffon

Dupatta :- Heavy Star Chiffon

CARE INSTRUCTIONS

DRY CLEAN RECOMMENDED

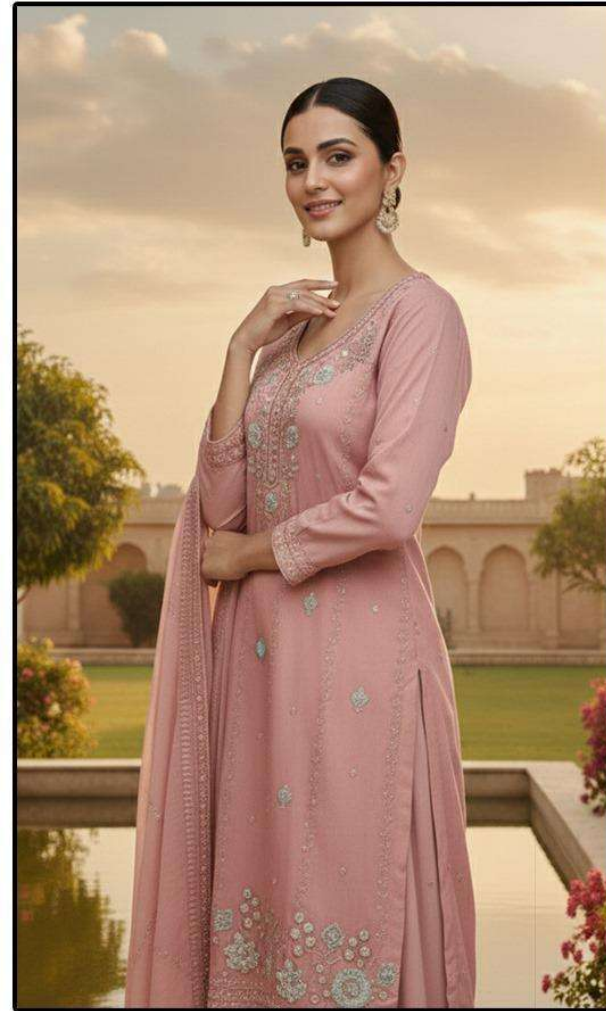
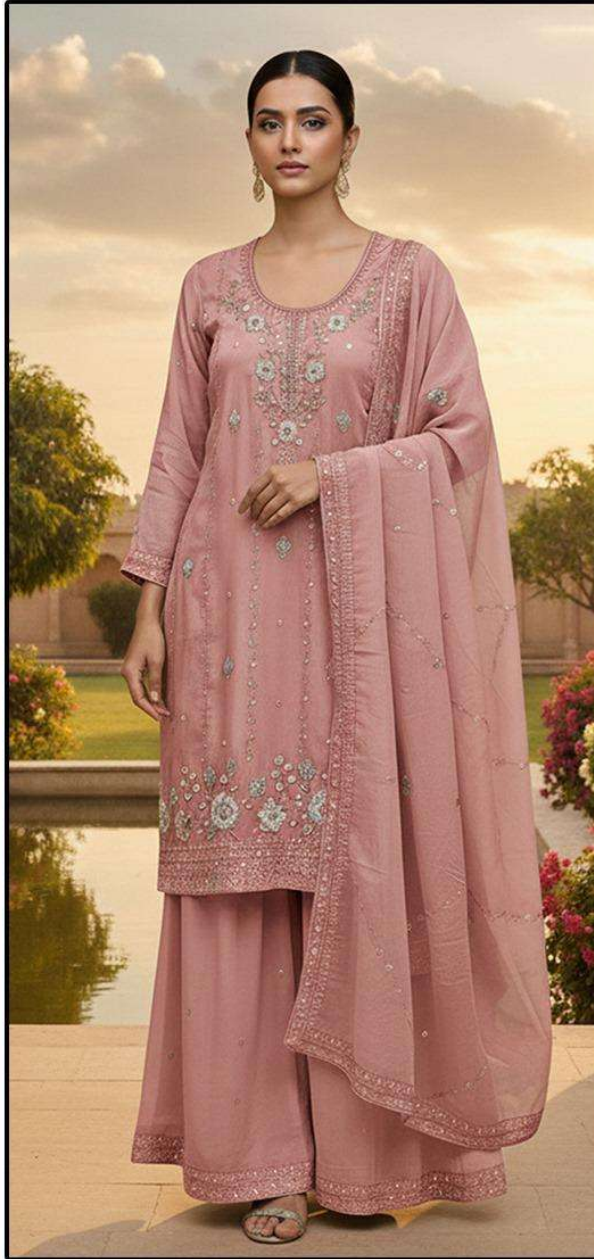
DO NOT USE ANY TYPE OF BLEACH OR STAIN REMOVING CHEMICALS
DO NOT OVER EXPOSE DAMP FABRIC TO STRONG SUNLIGHT
IRON AT MODERATE TEMPERATURE



HOOR TEX



HF-483



HF-483 B

Top :- Heavy Star Chiffon

Bottom :- Heavy Star Chiffon

Dupatta :- Heavy Star Chiffon

CARE INSTRUCTIONS

DRY CLEAN RECOMMENDED
DO NOT USE ANY TYPE OF BLEACH OR STAIN REMOVING CHEMICALS
DO NOT OVER EXPOSE DAMP FABRIC TO STRONG SUNLIGHT
IRON AT MODERATE TEMPERATURE



HOOR TEX



HF-483 C

Top :- Heavy Star Chiffon

Bottom :- Heavy Star Chiffon

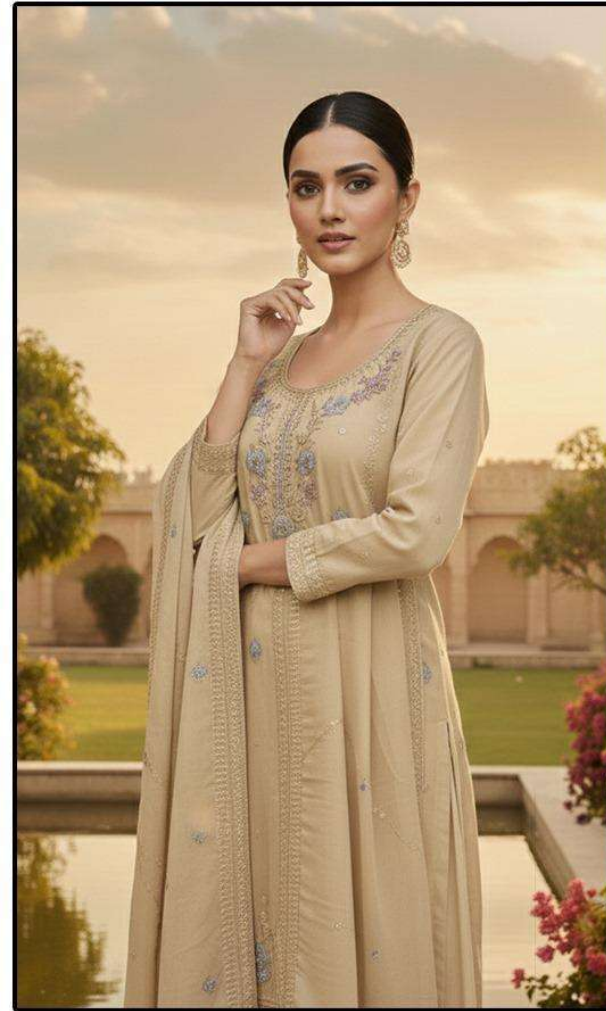
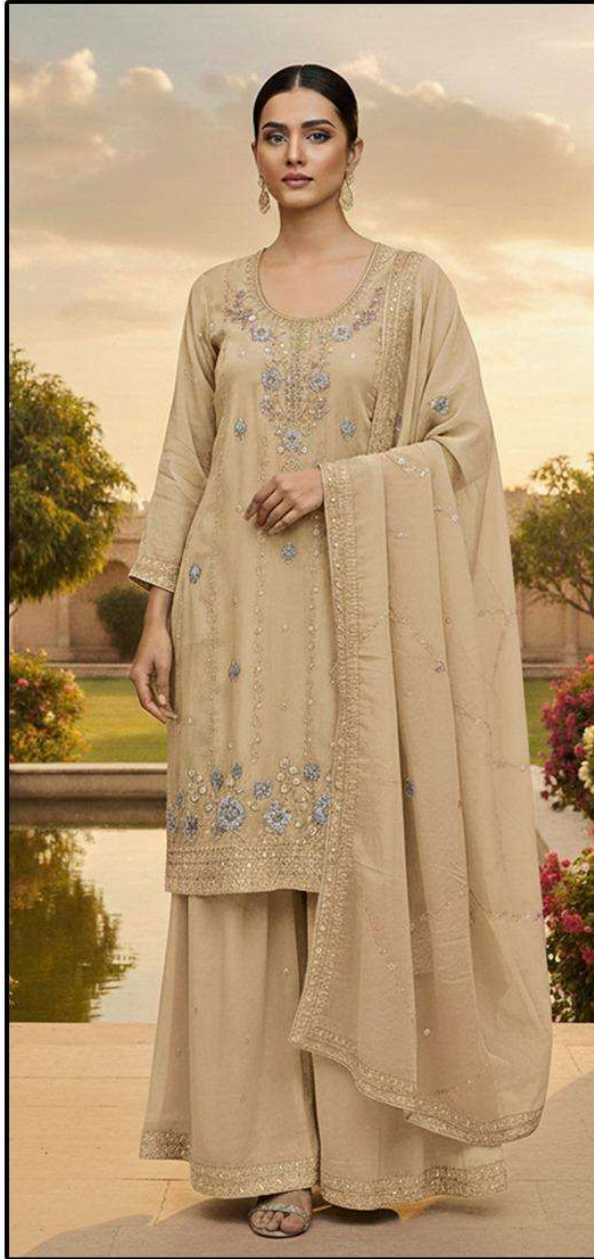
Dupatta :- Heavy Star Chiffon

CARE INSTRUCTIONS

DRY CLEAN RECOMMENDED
DO NOT USE ANY TYPE OF BLEACH OR STAIN REMOVING CHEMICALS
DO NOT OVER EXPOSE DAMP FABRIC TO STRONG SUNLIGHT
IRON AT MODERATE TEMPERATURE



HOOR TEX



HF-483 A

Top :- Heavy Star Chiffon

Bottom :- Heavy Star Chiffon

Dupatta :- Heavy Star Chiffon

CARE INSTRUCTIONS

DRY CLEAN RECOMMENDED

DO NOT USE ANY TYPE OF BLEACH OR STAIN REMOVING CHEMICALS
DO NOT OVER EXPOSE DAMP FABRIC TO STRONG SUNLIGHT
IRON AT MODERATE TEMPERATURE



HOOR TEX