



HF-114 A



HF-114 B



HF-114 C



HF-114 D

 [®]
HOOR TEX



HF-114 A



HF-114 B



HF-114 C



HF-114 D



HOOR TEX









HF-114 C

Top :- Heavy Chinon
Bottom :- Heavy Chinon
Dupatta :- Heavy Chinon

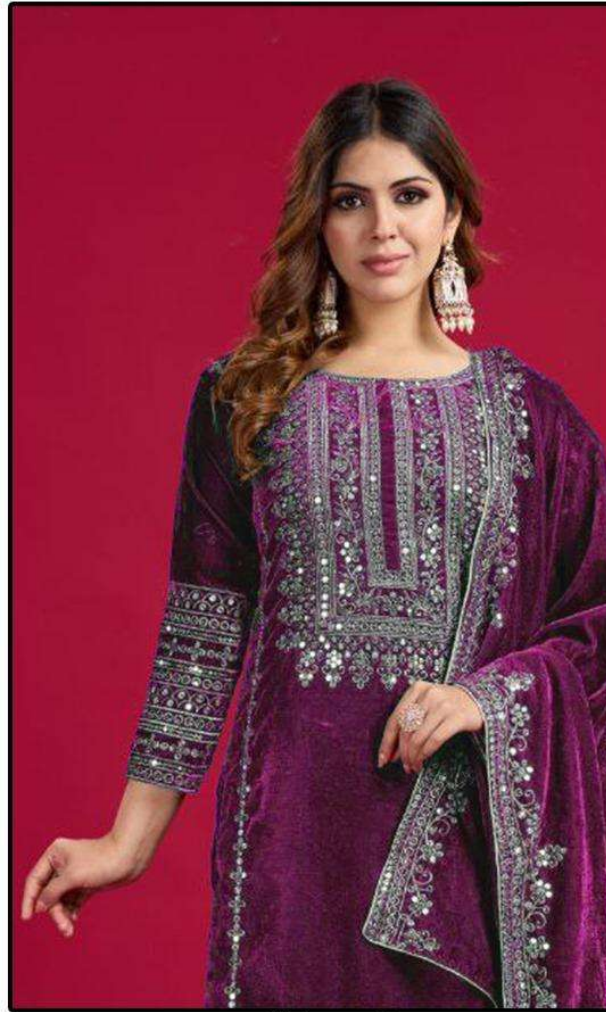
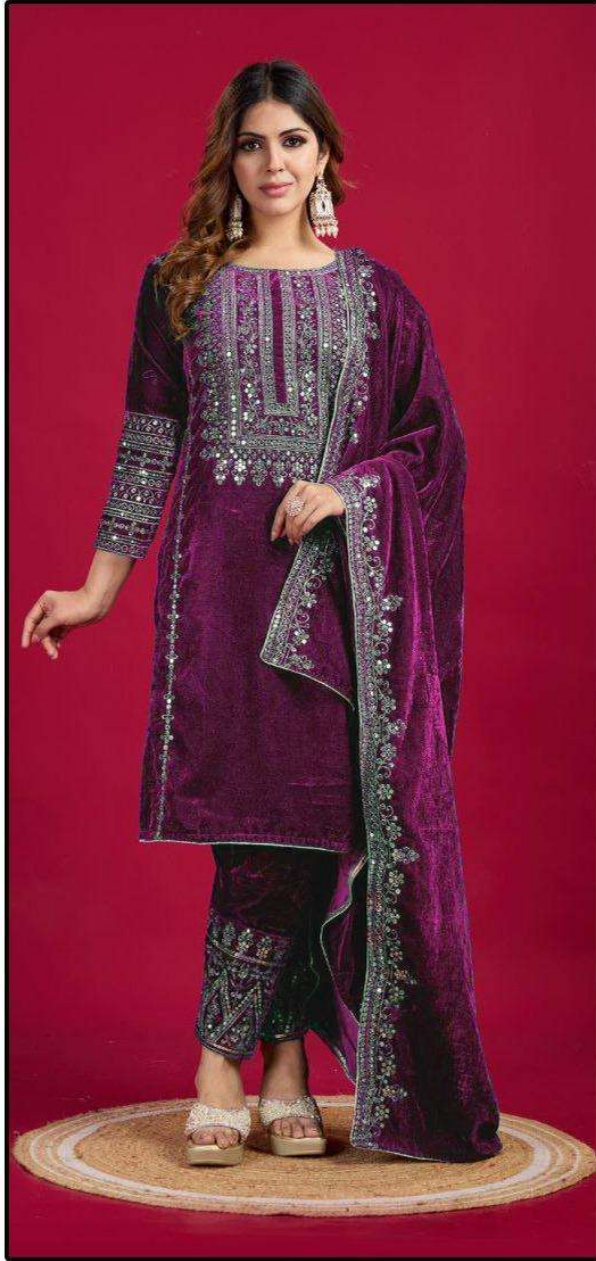


HOOR TEX

CARE INSTRUCTIONS

DRY CLEAN RECOMMENDED
DO NOT USE ANY TYPE OF BLEACH OR STAIN REMOVING CHEMICALS
DO NOT OVER EXPOSE DAMP FABRIC TO STRONG SUNLIGHT
IRON AT MODERATE TEMPERATURE





HF-114 D

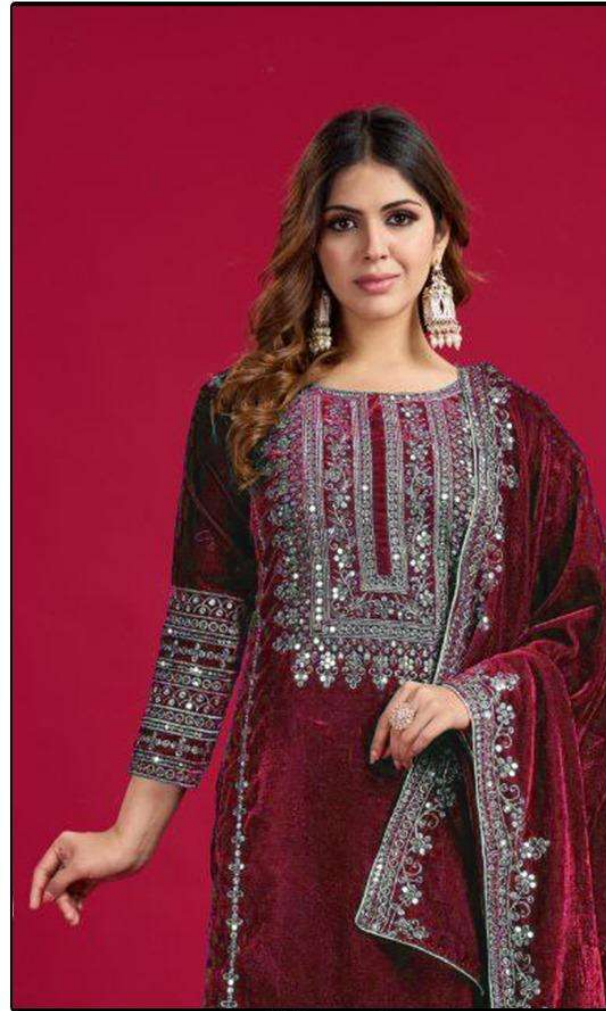
Top :- Heavy Chinon
Bottom :- Heavy Chinon
Dupatta :- Heavy Chinon



HOOR TEX

CARE INSTRUCTIONS

DRY CLEAN RECOMMENDED
DO NOT USE ANY TYPE OF BLEACH OR STAIN REMOVING CHEMICALS
DO NOT OVER EXPOSE DAMP FABRIC TO STRONG SUNLIGHT
IRON AT MODERATE TEMPERATURE



HF-114 B

Top :- Heavy Chinon
Bottom :- Heavy Chinon
Dupatta :- Heavy Chinon



HOOR TEX

CARE INSTRUCTIONS

DRY CLEAN RECOMMENDED
DO NOT USE ANY TYPE OF BLEACH OR STAIN REMOVING CHEMICALS
DO NOT OVER EXPOSE DAMP FABRIC TO STRONG SUNLIGHT
IRON AT MODERATE TEMPERATURE



HF-114 A

Top :- Heavy Chinon
Bottom :- Heavy Chinon
Dupatta :- Heavy Chinon



HOOR TEX

CARE INSTRUCTIONS

DRY CLEAN RECOMMENDED
DO NOT USE ANY TYPE OF BLEACH OR STAIN REMOVING CHEMICALS
DO NOT OVER EXPOSE DAMP FABRIC TO STRONG SUNLIGHT
IRON AT MODERATE TEMPERATURE