



SAMAIRA VOL-3

TOP Fox Georgette With Hevay embroidery (cut 2.50)
BOTTOM-INNER Dull Santoon (cut 4.25)
DUPATTA Fox Georgette With Hevay embroidery (cut 2.30)

CARE INSTRUCTIONS

- ☐ Dry clean only
- ⚠ Do not use any bleach or stain removing chemical
- ☐ Iron the fabric at moderate temperature
- ☒ Do not dry fabric in direct sunlight



D.No.1094



D.No.1095



D.No.1096



SAMAIRA VOL-3

TOP Fox Georgette With Hevay embroidery (cut 2.50)
BOTTOM-INNER Dull Santoon (cut 4.25)
DUPATTA Fox Georgette With Hevay embroidery (cut 2.30)

CARE INSTRUCTIONS

- ☐ Dry clean only
- ☒ Do not use any bleach or stain removing chemical
- ☒ Iron the fabric at moderate temperature
- ☒ Do not dry fabric in direct sunlight



D.No.1094



D.No.1095



D.No.1096





Sajida
DESIGNERS SUIT



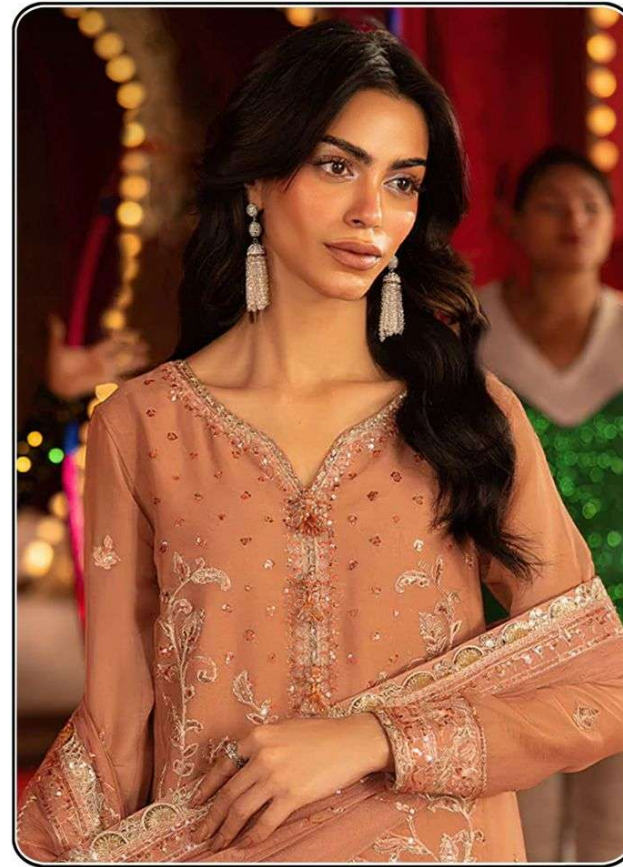
Sajida





Sajida[®]
DESIGNERS SUIT

SAMAIRA VOL-3



SDS -1096

TOP

Fox Georgette with
Heavy Embroidery (cut 2.50)

BOTTOM-INNER

Dull Santoon (cut 4.25)

DUPATTA

Fox Georgette with
Heavy Embroidery (cut 2.50)

CARE INSTRUCTIONS

- ☉ Dry clean only
- ⊗ Do not use any bleach or stain removing chemical
- ☼ Iron the fabric at moderate temperature
- ☒ Do not dry fabric in direct sunlight



Sajida[®]
DESIGNERS SUIT

SAMAIRA VOL-3



SDS -1094

TOP Fox Georgette with
Heavy Embroidery (cut 2.50)
BOTTOM-INNER Dull Santoon (cut 4.25)
DUPATTA Fox Georgette with
Heavy Embroidery (cut 2.50)

CARE INSTRUCTIONS

- ☉ Dry clean only
- ⊗ Do not use any bleach or stain removing chemical
- ☐ Iron the fabric at moderate temperature
- ⊗ Do not dry fabric in direct sunlight



Sajida[®]
DESIGNERS SUIT

SAMAIRA VOL-3



SDS -1095

TOP

Fox Georgette with
Heavy Embroidery (cut 2.50)

BOTTOM-INNER

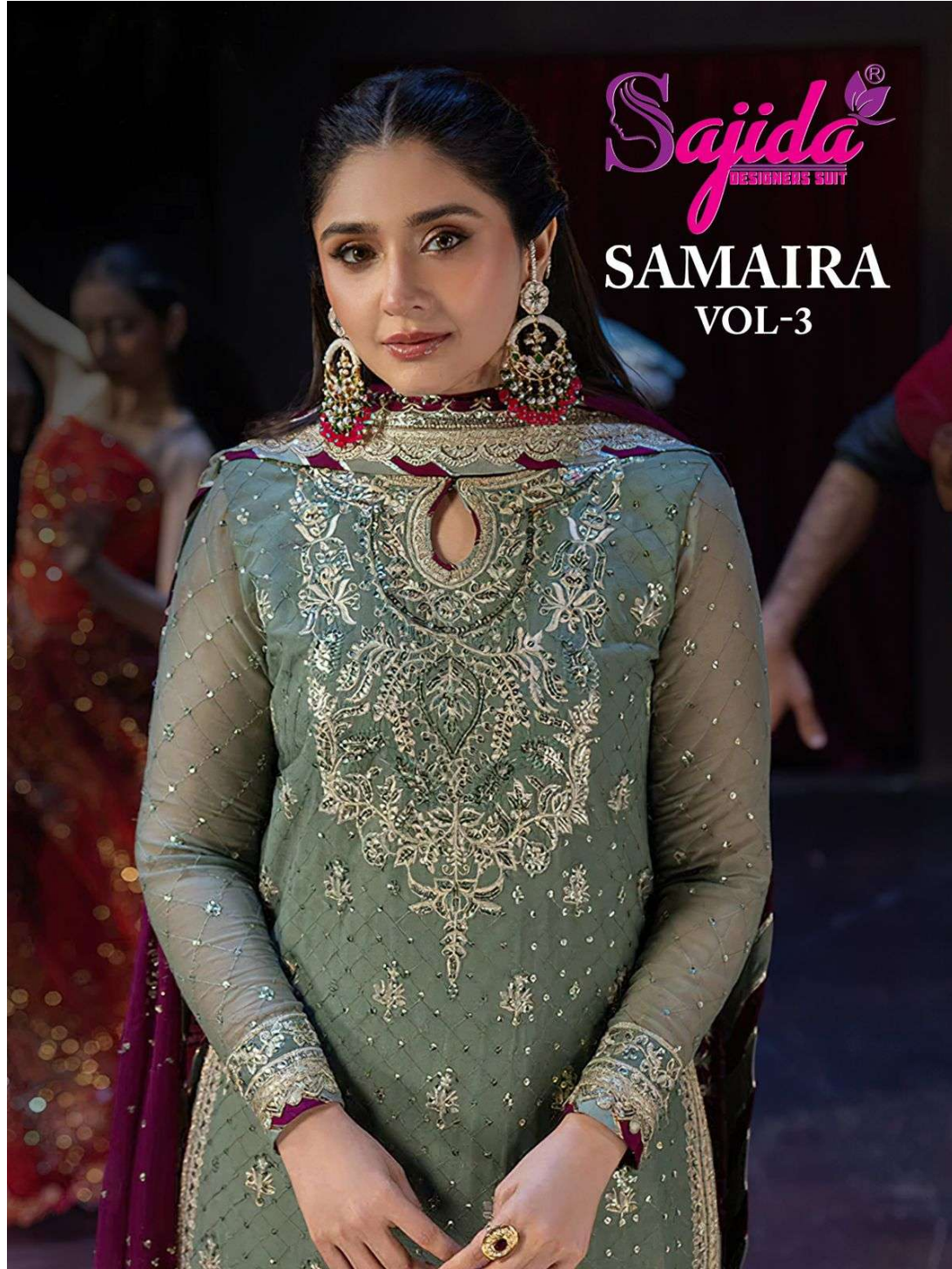
Dull Santoon (cut 4.25)

DUPATTA

Fox Georgette with
Heavy Embroidery (cut 2.50)

CARE INSTRUCTIONS

- ☉ Dry clean only
- ✘ Do not use any bleach or stain removing chemical
- ☰ Iron the fabric at moderate temperature
- ☒ Do not dry fabric in direct sunlight



Sajida[®]
DESIGNERS SUIT

SAMAIRA
VOL-3