



ALAYA-7

TOP Hevay Fox Georgette embroidery with Khatli work (cut 2.50)
BOTTOM-INNER Dull Santoon (cut 4.25)
DUPATTA Hevay Fox Georgette embroidery work (cut 2.30)

CARE INSTRUCTIONS

- ☐ Dry clean only
- ⚠ Do not use any bleach or stain removing chemical
- ☐ Iron the fabric at moderate temperature
- ☒ Do not dry fabric in direct sunlight



D.No.1100



D.No.1101



D.No.1102



ALAYA-7

TOP Hevay Fox Georgette embroidery with Khatli work (cut 2.50)
BOTTOM-INNER Dull Santoon (cut 4.25)
DUPATTA Hevay Fox Georgette embroidery work (cut 2.30)

CARE INSTRUCTIONS

- ☐ Dry clean only
- ☒ Do not use any bleach or stain removing chemical
- ☒ Iron the fabric at moderate temperature
- ☒ Do not dry fabric in direct sunlight



D.No.1100



D.No.1101



D.No.1102



Sajida
DESIGNERS SUIT





Sajida
DESIGNERS SUIT





Sajida
DESIGNERS SUIT





Sajida[®]
DESIGNERS SUIT

ALAYA-7



SDS -1102

TOP Fox Georgette with Heavy Embroidery (cut 2.50)

BOTTOM-INNER Dull Santoon (cut 4.25)

DUPATTA Fox Georgette with Heavy Embroidery (cut 2.50)

CARE INSTRUCTIONS

- ☉ Dry clean only
- ⊗ Do not use any bleach or stain removing chemical
- ☼ Iron the fabric at moderate temperature
- ⊗ Do not dry fabric in direct sunlight



Sajida[®]
DESIGNERS SUIT

ALAYA-7



SDS -1101

TOP

Fox Georgette with
Heavy Embroidery (cut 2.50)

BOTTOM-INNER

Dull Santoon (cut 4.25)

DUPATTA

Fox Georgette with
Heavy Embroidery (cut 2.50)

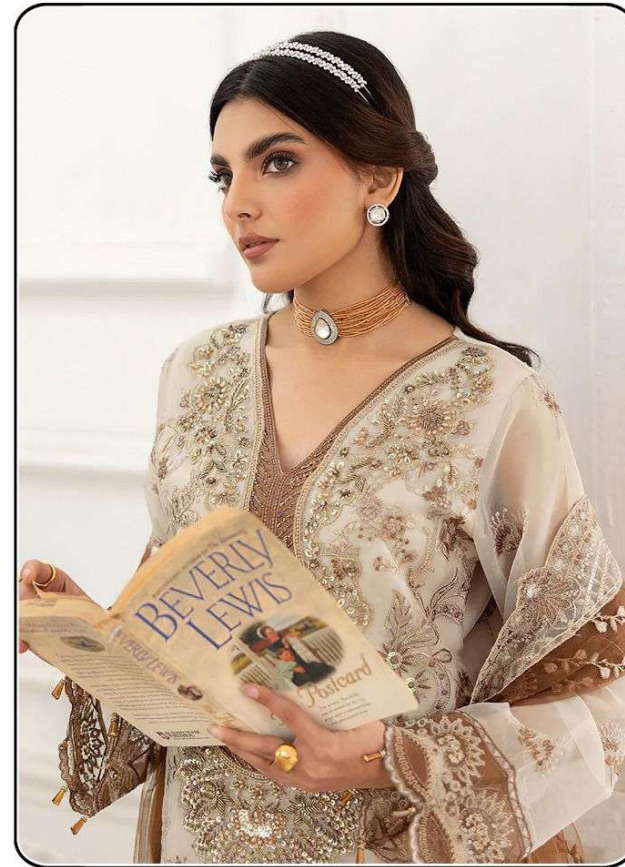
CARE INSTRUCTIONS

- ☉ Dry clean only
- ⊗ Do not use any bleach or stain removing chemical
- ☐ Iron the fabric at moderate temperature
- ☒ Do not dry fabric in direct sunlight



Sajida[®]
DESIGNERS SUIT

ALAYA-7



SDS -1100

TOP Fox Georgette with Heavy Embroidery (cut 2.50)

BOTTOM-INNER Dull Santoon (cut 4.25)

DUPATTA Fox Georgette with Heavy Embroidery (cut 2.50)

CARE INSTRUCTIONS

- ☉ Dry clean only
- ⊗ Do not use any bleach or stain removing chemical
- ☐ Iron the fabric at moderate temperature
- ☒ Do not dry fabric in direct sunlight



Sajida[®]
DESIGNERS SUIT

ALAYA-7