

Aaida

Vol-1

AlzohaibTM



AZ-1350-A



AZ-1350-B



AZ-1356-A



AZ-1356-B

Aaida

Vol-1

AlzohaibTM



AZ-1350-A



AZ-1350-B



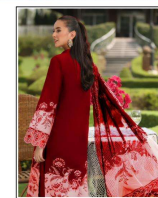
AZ-1356-A



AZ-1356-B



Alzohaib



Alzohaib
AZ-136-A
COTTON QUR'AN



Alzohaib



Alzohaib



Alzohaib
AZ-1358-B
COTTON-KHAKHRA



Alzohaib



Alzohaib
AZ-1504-B



 Alzohaib™

AZ-1350-B
COTTON DUPATTA



 Alzohaib™

AZ-1356-A
COTTON DUPATTA



 Alzohaib™

AZ-1356-B
COTTON DUPATTA



 Alzohaib™

AZ-1350-A
COTTON DUPATTA

A woman with dark hair pulled back, wearing a vibrant red long-sleeved dress with intricate white floral embroidery. She is standing outdoors in a garden-like setting. In the background, there are green plants, a wicker chair, and a table with a white lace tablecloth, pink flowers, and two glasses. The overall scene is bright and elegant.

Alzohaib™

Aaida

Vol-1