



**TOP** Fox Georgette with Heavy Embroidery (cut 2.50)

**BOTTOM-INNER** Dull Santoon (cut 4.25)

**DUPATTA** Fox Georgette with Heavy Embroidery (cut 2.30)



**D.No.014**



**D.No.015**



**TOP** Fox Georgette with Heavy Embroidery (cut 2.50)

**BOTTOM-INNER** Dull Santoon (cut 4.25)

**DUPATTA** Fox Georgette with Heavy Embroidery (cut 2.30)



**D.No.014**



**D.No.015**



ZAHA



TOP  
DRESS  
DRESS



ZAHA



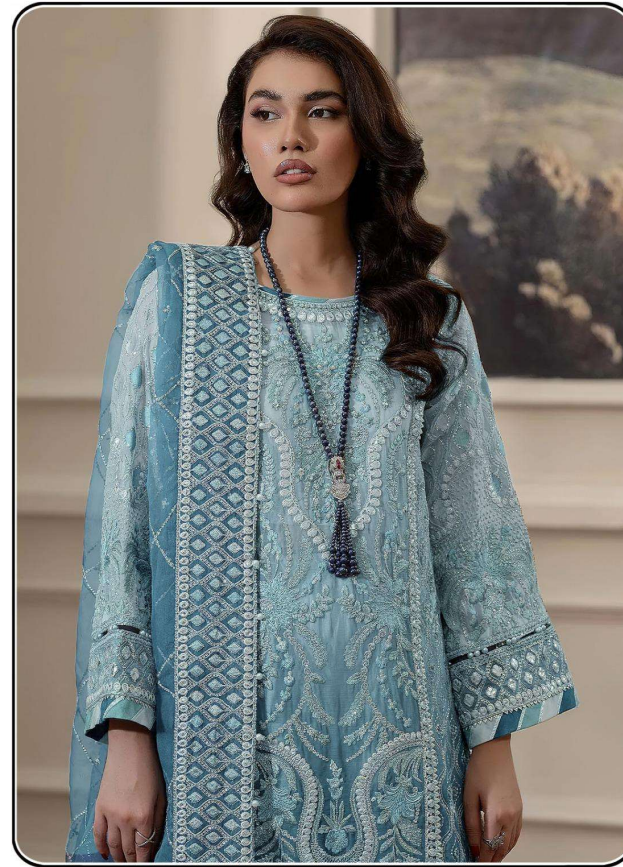
ZAHA

D.No.

The Company with  
Registered Office at  
BOTTLE NECK  
MUMBAI  
Taty Sanyal



  
**ZAHA**



**D.No: 014**

**TOP**

Fox Georgette with  
Heavy Embroidery (cut 2.50)

**BOTTOM-INNER** Dull Santoon (cut 4.25)

**DUPATTA**

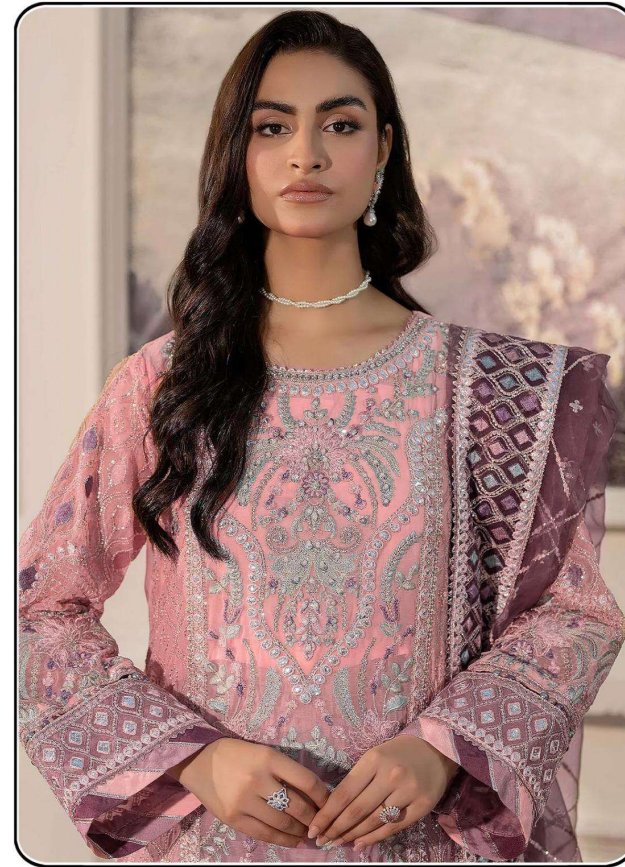
Fox Georgette with  
Heavy Embroidery (cut 2.50)

**CARE INSTRUCTIONS**

- ☉ Dry clean only
- ✘ Do not use any bleach or stain removing chemical
- ☐ Iron the fabric at moderate temperature
- ☒ Do not dry fabric in direct sunlight



  
**ZAHA**



**D.No: 015**

**TOP** Fox Georgette with  
Heavy Embroidery (cut 2.50)  
**BOTTOM-INNER** Dull Santoon (cut 4.25)  
**DUPATTA** Fox Georgette with  
Heavy Embroidery (cut 2.50)

**CARE INSTRUCTIONS**

- ☉ Dry clean only
- ✘ Do not use any bleach or stain removing chemical
- ☐ Iron the fabric at moderate temperature
- ☒ Do not dry fabric in direct sunlight