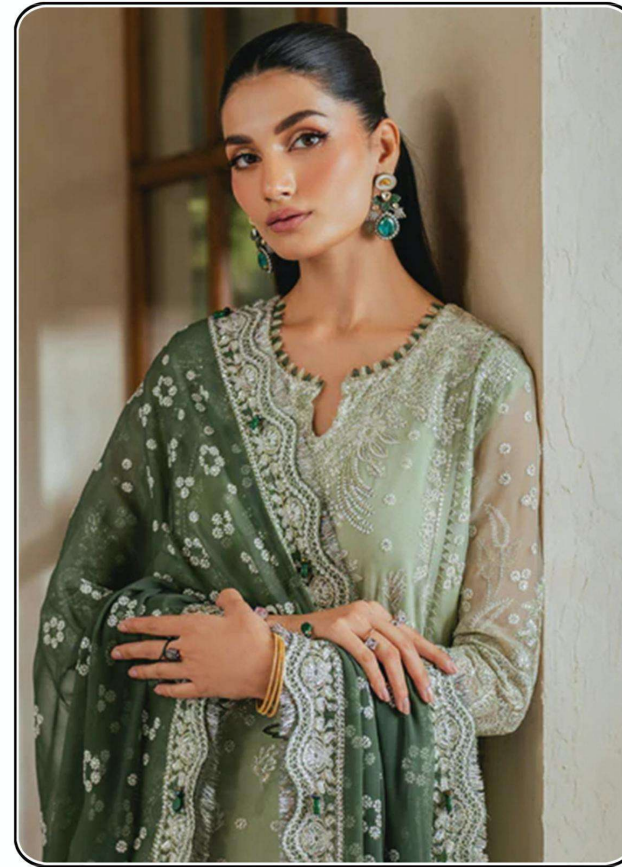




**Sajida**<sup>®</sup>  
DESIGNERS SUIT

## SAMAIRA-2



**D.No: 1036**

**TOP**

Fox Georgette with Heavy  
Embroidery (cut 2.50)

**BOTTOM-INNER**

Dull Santoon (cut 4.25)

**DUPATTA**

Fox Georgette with Heavy  
Embroidery (cut 2.30)

**CARE INSTRUCTIONS**

- ☉ Dry clean only
- ⚠ Do not use any bleach or stain removing chemical
- ☐ Iron the fabric at moderate temperature
- ☒ Do not dry fabric in direct sunlight



*Sajida*  
DESIGNERS SUIT



*Sajida*

SAMAIRA-2



D.No. 16

TOP

BOTTOM: INSET

LENGTH: 110cm



**Sajida**<sup>®</sup>  
DESIGNERS SUIT

## SAMAIRA-2



**D.No: 1036**

**TOP**

Fox Georgette with Heavy  
Embroidery (cut 2.50)

**BOTTOM-INNER** Dull Santoon (cut 4.25)

**DUPATTA**

Fox Georgette with Heavy  
Embroidery (cut 2.30)

CARE INSTRUCTIONS

- ☉ Dry clean only
- ⚠ Do not use any bleach or stain removing chemical
- ☐ Iron the fabric at moderate temperature
- ☒ Do not dry fabric in direct sunlight



**Sajida**<sup>®</sup>  
DESIGNERS SUIT

## SAMAIRA-2



**D.No: 1036**

**TOP**

Fox Georgette with Heavy  
Embroidery (cut 2.50)

**BOTTOM-INNER**

Dull Santoon (cut 4.25)

**DUPATTA**

Fox Georgette with Heavy  
Embroidery (cut 2.30)

**CARE INSTRUCTIONS**

- ☉ Dry clean only
- ⚠ Do not use any bleach or stain removing chemical
- ☐ Iron the fabric at moderate temperature
- ☒ Do not dry fabric in direct sunlight