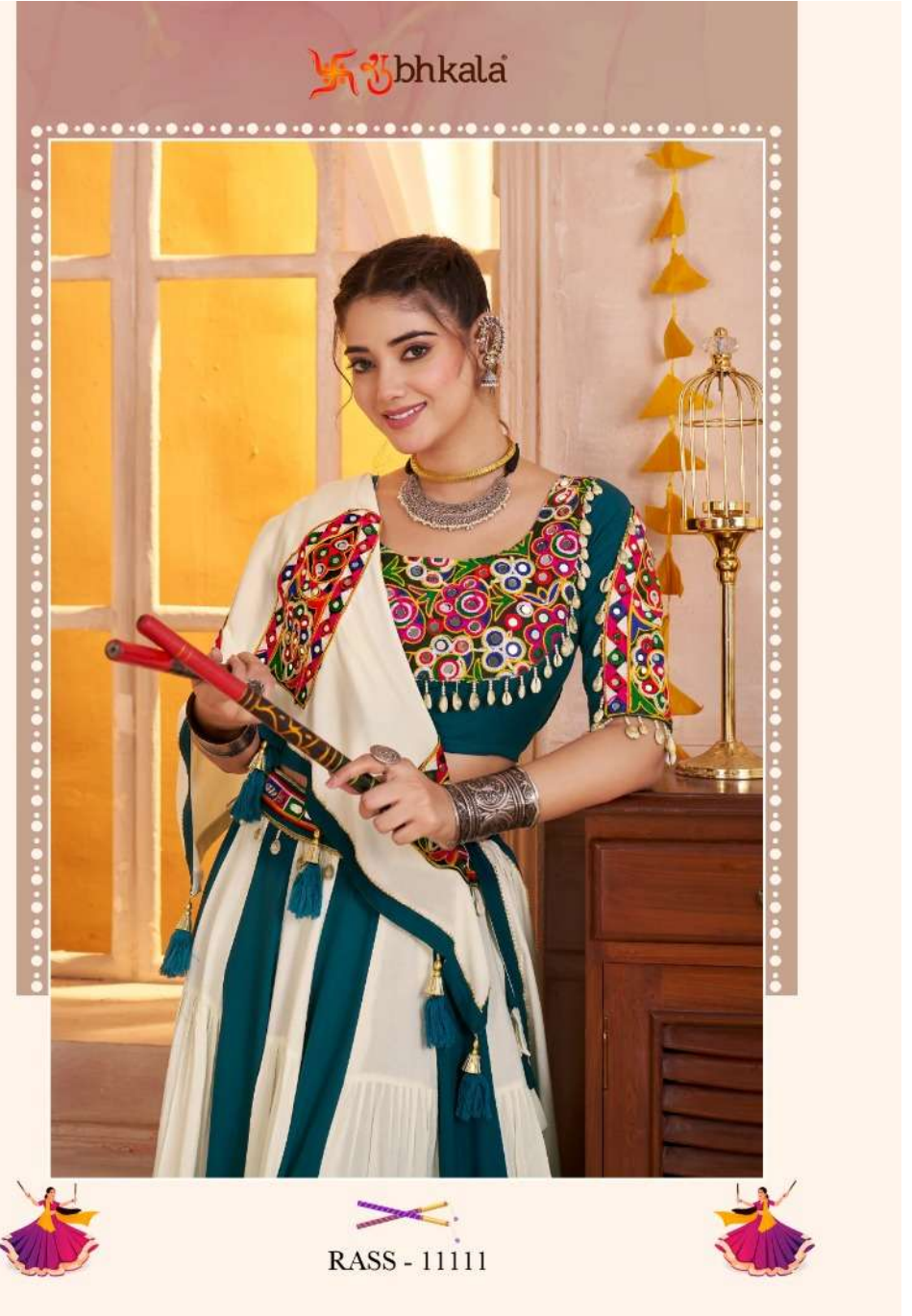


शुभकला®



गय  
VOL.30





bhkala

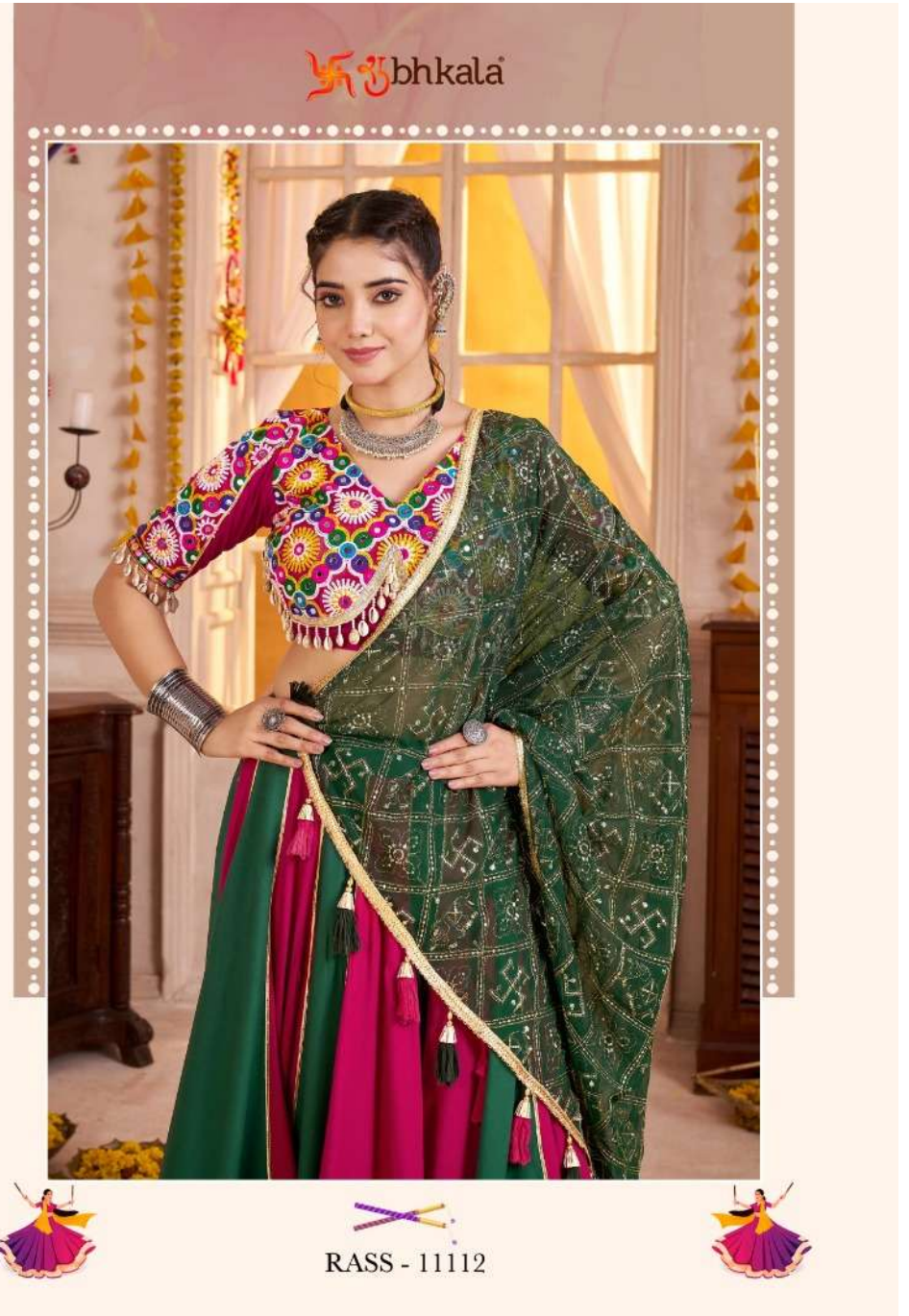


RASS - 11111







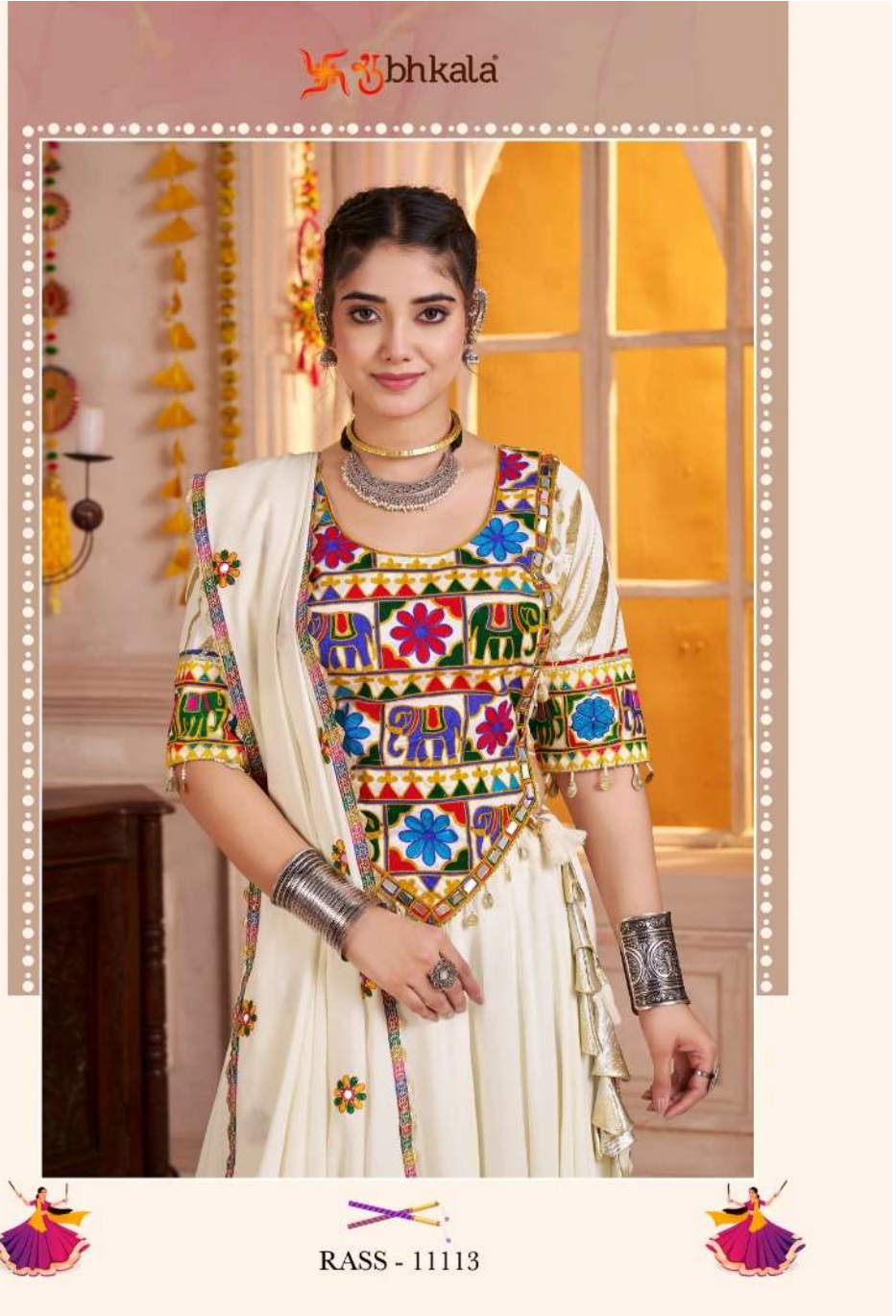


bhkala

RASS - 11112







RASS - 11113







bhkala



VOL.30



Design NO. (SKU)	Color	Lehenga Fabric	Choli Fabric	Dupatta Fabric	SIZE (Full Stitched) (M-38 SIZE) With Customise upto 44 INCH	Lehenga Flair	Lehenga Work	Choli Work	Dupatta Work	Weight (KG)
11111	Multi Color	Viscose Cotton	Viscose Cotton	Viscose Cotton	Choli Chest: 38 INCH Choli Length: 15 INCH Lehenga Waist: 42 INCH Lehenga Length: 40 INCH Dupatta Length: 2.30 MTR	8.5 MTR	Kutchi Patch Work with All Over Mirror and Frill Pattern	Kutchi Work with Mirror and Kodi Embelishment	Kutchi Patch work All Over	2
11112	Multi Color	Viscose Cotton	Viscose Cotton	Faux	Choli Chest: 38 INCH Choli Length: 15 INCH Lehenga Waist: 42 INCH Lehenga Length: 40 INCH Dupatta Length: 2.30 MTR	8.5 MTR	Lampi Bordering Concept in Lehenga	Kutchi Work with Mirror and Kodi Embelishment	Jari with Sequince Embroidered Work	2
11113	White	Viscose Cotton	Viscose Cotton	Viscose Cotton	Choli Chest: 38 INCH Choli Length: 15 INCH Lehenga Waist: 42 INCH Lehenga Length: 40 INCH Dupatta Length: 2.30 MTR	8.5 MTR	Lampi Bordering Concept in Lehenga	Kutchi Work with Mirror and Kodi Embelishment	Thread Embroidered Work with All Over Mirror	2

THIS BOOK / CATALOGUE / LOGO / ARE PROTECTED UNDER COPYRIGHT ACT.

AN INLLEGAL/UNAUTHORIZED REPRINT, PUBLISHING, REPRODUCTION, DISTRIBUTION AND MODIFICATION OF ANY IMAGES, PHOTOGRAPHS AND PRODUTCS, TOTALLY OR IN PART, FOR ANY PURPOSE, REASON OR CAUSE IS STRICTLY PROHIBITED AND PUNISHABLE UNDER LAW.



RASS - 11111



RASS - 11112



RASS - 11113

