



ROSE

LILY & LALI[®]
GULS PRIDE

A PRODUCT OF  FRONA GROUP



LILY & LALI[®]

GULS PRIDE

A PRODUCT OF Sirona GROUP

ROSE

FABRICS DETAILS

: TOP :

HANDWORK ON SIMMER SILK FABRICS WITH COTTON LINING,
DAMAN HANDWORK, EXCLUSIVE SLEEVE WORK

: BOTTOM :

HANDWORK LACE ON FANCY SIMMER SILK FABRICS

: DUPATTA :

FANCY FABRICS FLORAL PRINT DUPATTA
WITH TUSSE & FANCY LACE

SIZE : M-38 , L-40 , XL-42

XXL-44 , 3XL-46

NOTE : POCKET INSIDE THE PANT



26671



26672



26673



26674

ROSE

LILY & LALI[®]
GULS PRIDE
A PRODUCT OF **friona** GROUP



A CAPTIVATING ENSEMBLE, RICH IN DETAIL AND VIBRANT IN SPIRIT

vibrant
LILY&LALI[®]
GULS PRIDE
A PRODUCT OF **WIONA** GROUP

26674





DRAPED IN ELEGANCE, REFLECTING CULTURAL RICHNESS **26673**

Richness

LILY&LALI[®]
GULS PRIDE
A PRODUCT OF sirona GROUP

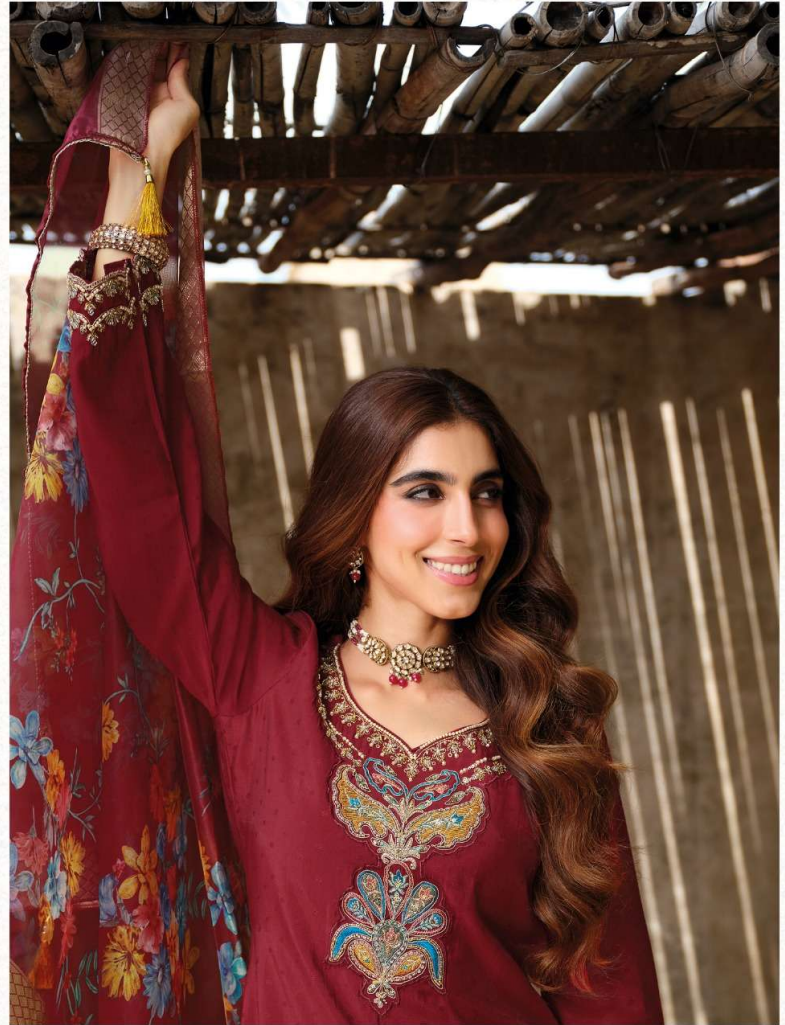




WHERE SOPHISTICATION MEETS A JOYFUL BURST OF COLOR **26672**

burst
LILY & LALI[®]
GULS PRIDE
A PRODUCT OF **fronda** GROUP





RADIANT IN CLASSIC CHARM WITH A MODERN FLORAL TWIST

26671

modern
LILY&LALI[®]

GULS PRIDE

A PRODUCT OF Ifone[®] GROUP