



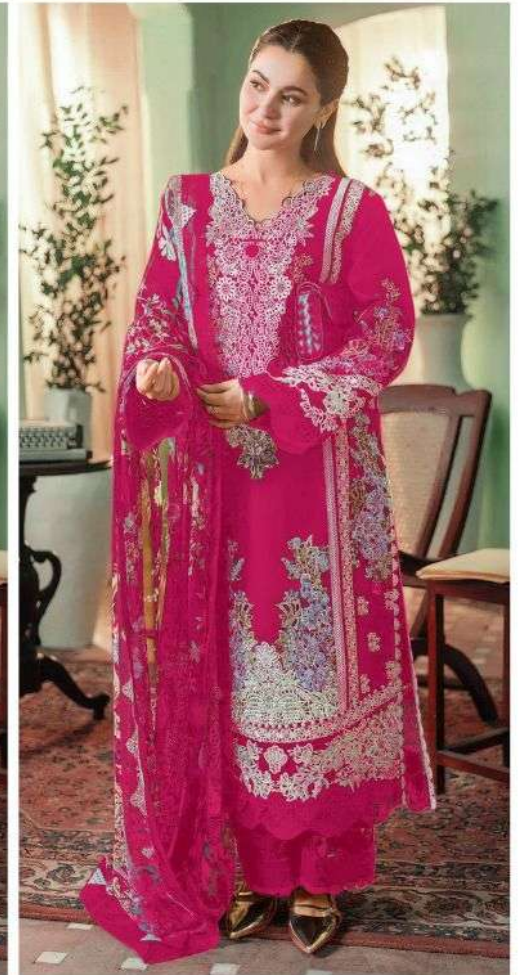
AZ-1234-A



AZ-1234-B



AZ-1234-C



AZ-1234-D



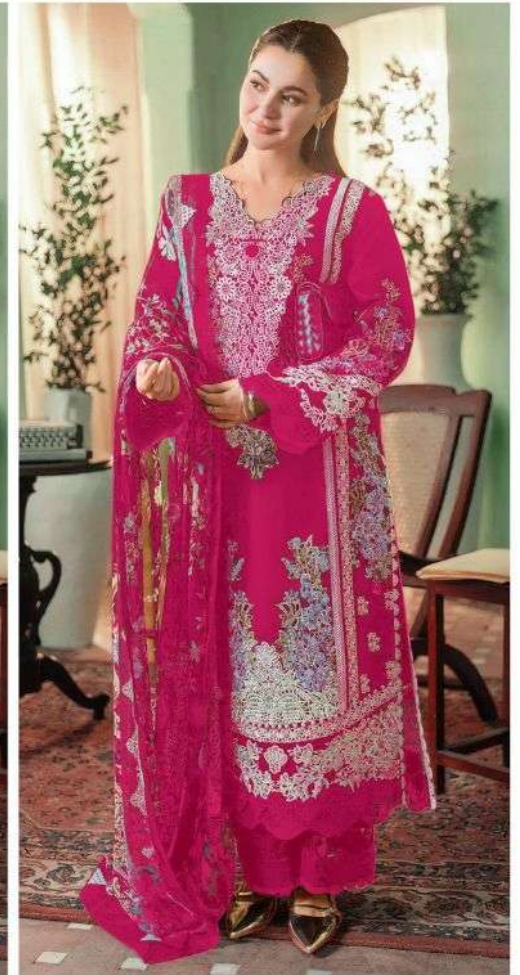
AZ-1234-A



AZ-1234-B



AZ-1234-C



AZ-1234-D



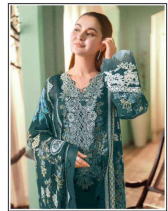
Alzohaib



Alzohaib  
AZ-1234-D  
1234 5678901234 5678901234 5678901234 5678901234



Alzohaib



Alzohaib

AZ-1234-C

TOP Cotton with Digital Printing Embroidery with Pearl Buttons  
BOTTOM LINEN  
DUPPETA Cotton with Digital Print

Alzohaib



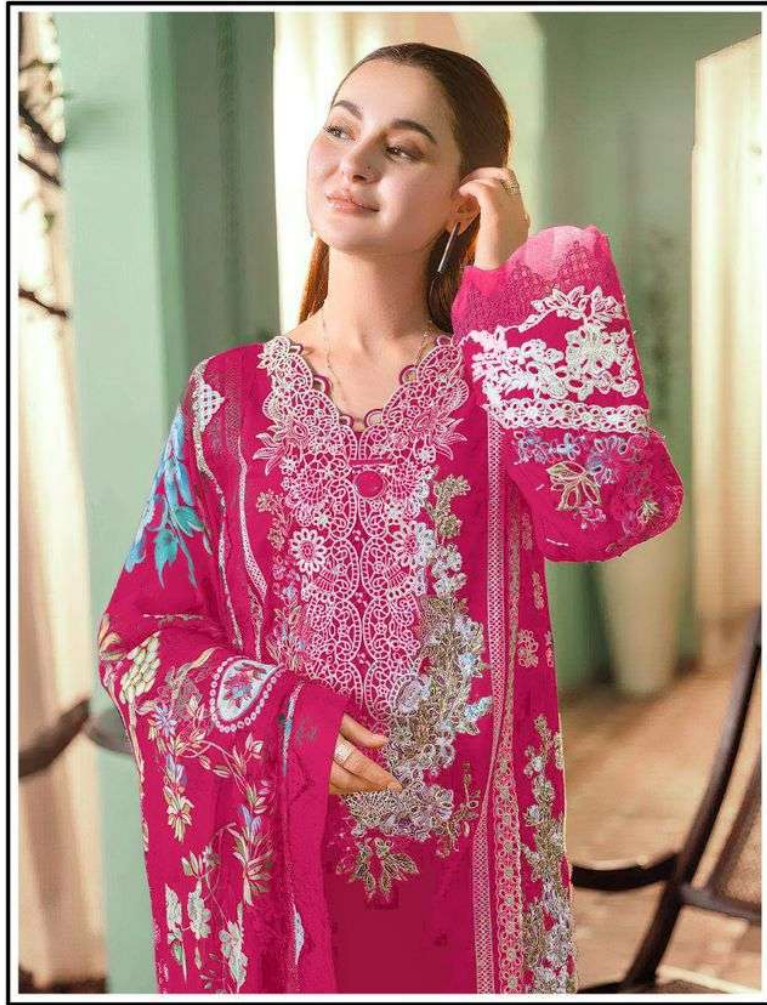
Alzohaib  
AZ-1234-B  
TOP: Cotton with silk, Middle: Polyester, Bottom: Polyester  
BOTTOM: Cotton, DUNYA: Cotton with Polyester  
DUNYA: Cotton with Polyester

Alzohaib



Alzohaib  
AZ-1334-A

100% Cotton/Linen Blend  
Hand Embroidered  
MADE IN PAKISTAN



 **Alzohaib**<sup>TM</sup>

**AZ-1234-D**

**TOP** Cambric cotton With Heavy Embroidery work    **BOTTOM-INNER** Semi Lawn    **DUPATTA** Cotton with Digital print



 **Alzohaib**<sup>TM</sup>

**AZ-1234-C**

**TOP** Cambric cotton With Heavy Embroidery work    **BOTTOM-INNER** Semi Lawn    **DUPATTA** Cotton with Digital print



 **Alzohaib**<sup>TM</sup>

**AZ-1234-B**

**TOP** Cambric cotton With Heavy Embroidery work    **BOTTOM-INNER** Semi Lawn    **DUPATTA** Cotton with Digital print



 Alzohaib™

AZ-1234-A

**TOP** Cambric cotton With Heavy Embroidery work    **BOTTOM-INNER** Semi Lawn    **DUPATTA** Cotton with Digital print

A woman with dark hair pulled back, wearing a yellow and white embroidered dress, is shown in profile, looking upwards and to the right. The dress features intricate white lace and floral embroidery on a yellow background. The background is a soft-focus indoor setting with light-colored walls and a window.

Alzohaib™

**Zahra**

**Vol-1**