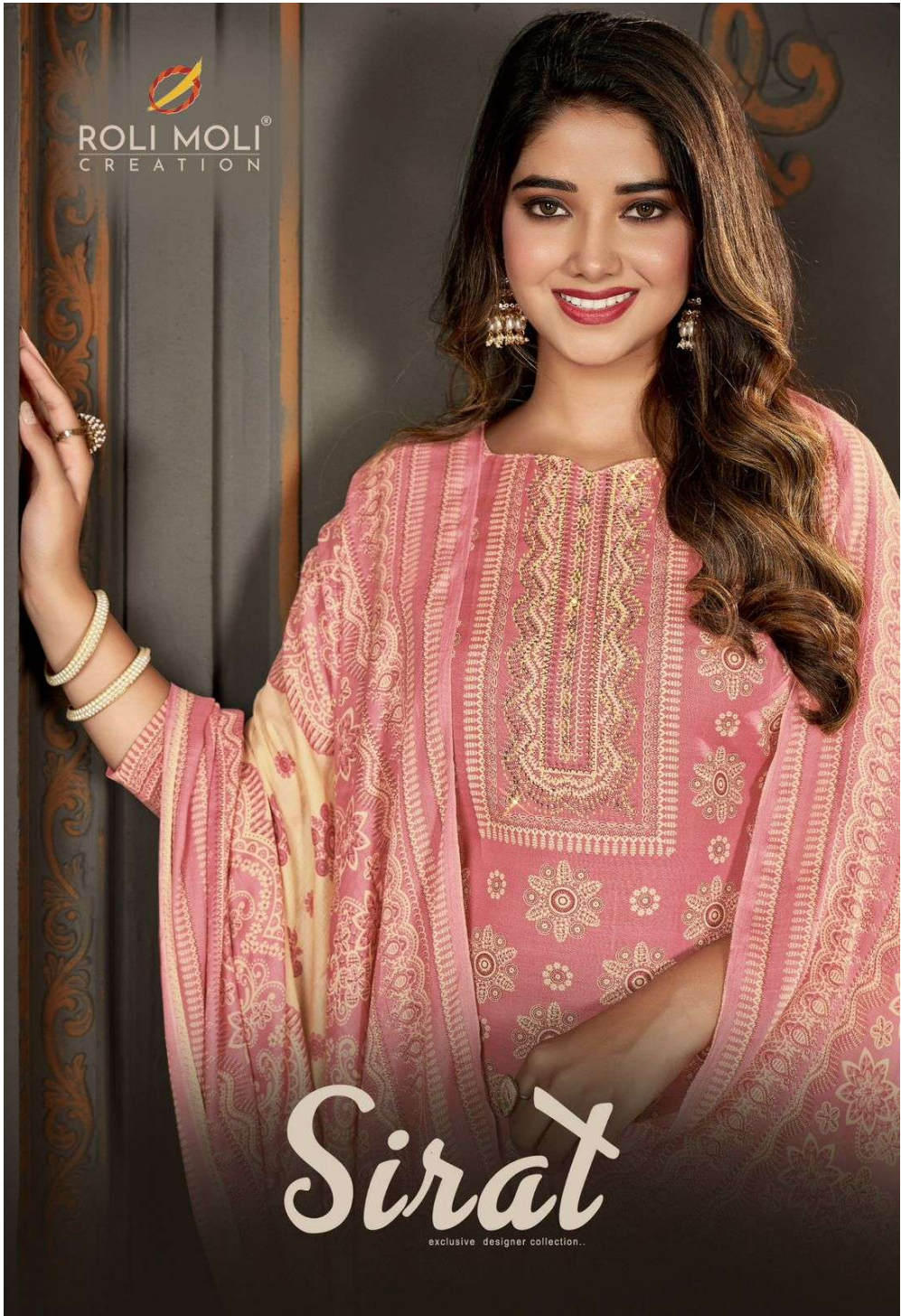




ROLI MOLLI[®]
CREATION



Sirat

exclusive designer collection..


ROLI MOLLI[®]
CREATION



CLASSIC

These dresses make you look simply divine, so that the world respects, reveres and worships you in all your glory. (become the lady the world bows down to)



D.No.1002




ROLI MOLLI
CREATION

EXCELLENT

A couturier must be an
architect for design,
a sculptor for shape, a painter
for color.

When a woman walks, the
dress must walk
when she dances, the dress
must dance



D.No. 1001



GORGEOUS

Nothing compares you to
you are the pride of every-
one who loves you. You're
the envy of the rest of the
world! But you're a cut
above them. Why dress in
anything but what you're
cut out to be.

D.No. 1003



ETERNAL

Some masterpieces define the trend of the era they're born in, and the ages that follow. These colors cut of time are without compare, perfect in perfection, timeless in magnificence.



D.No. 1005


ROLI MOLLI[®]
CREATION



A couturier must be an
architect for design,
a sculptor for shape, a painter
for colour.
When a woman walks, the
dress must walk,
when she dances the dress
must dance.



D.No.1004


ROLI MOLÍ[®]
CREATION



EXCELLENT

A designer must be an architect for design, a sculptor for shape, a painter for color.
When a woman walks, the dress must walk, when she dances the dress must dance.


D.No.1006


ROLI MOLLI[®]
CREATION

ADMIRABLE

However big the occasion, your admirers
can't keep their eyes off you. That is the
power of our creations.



D.No. 1008





Elegance is the balance between proportion
in women and nature, manufacturers,
women make fashion.



D.No.1007

ROLI MOLI SIRAT




D.No.1001




D.No.1002




D.No.1003




D.No.1004




D.No.1005




D.No.1006




D.No.1007




D.No.1008