

A woman with dark hair pulled back, wearing a yellow and white embroidered dress, is shown in profile, looking upwards and to the right. The dress features intricate white lace and floral embroidery on a yellow background. The background is a soft-focus indoor setting with light-colored walls and a doorway.

Alzohaib™

Zahra

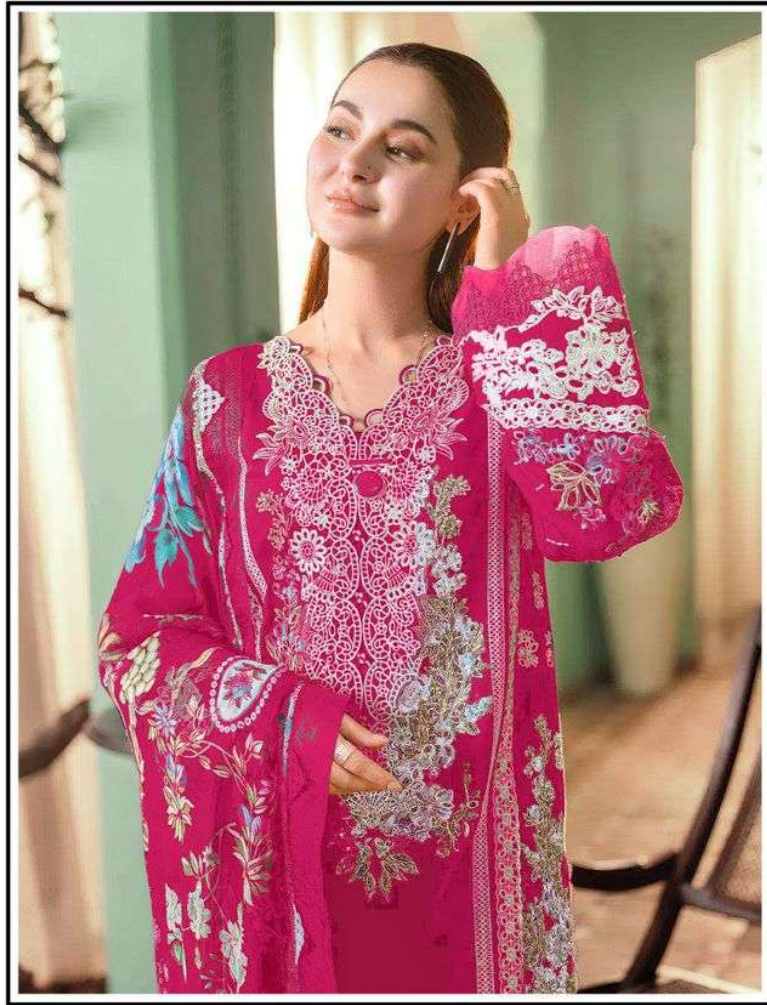
Vol-1



 **Alzohaib**TM

AZ-1234-C

TOP Cambric cotton With Heavy Embroidery work **BOTTOM-INNER** Semi Lawn **DUPATTA** Cotton with Digital print



 **Alzohaib**TM

AZ-1234-D

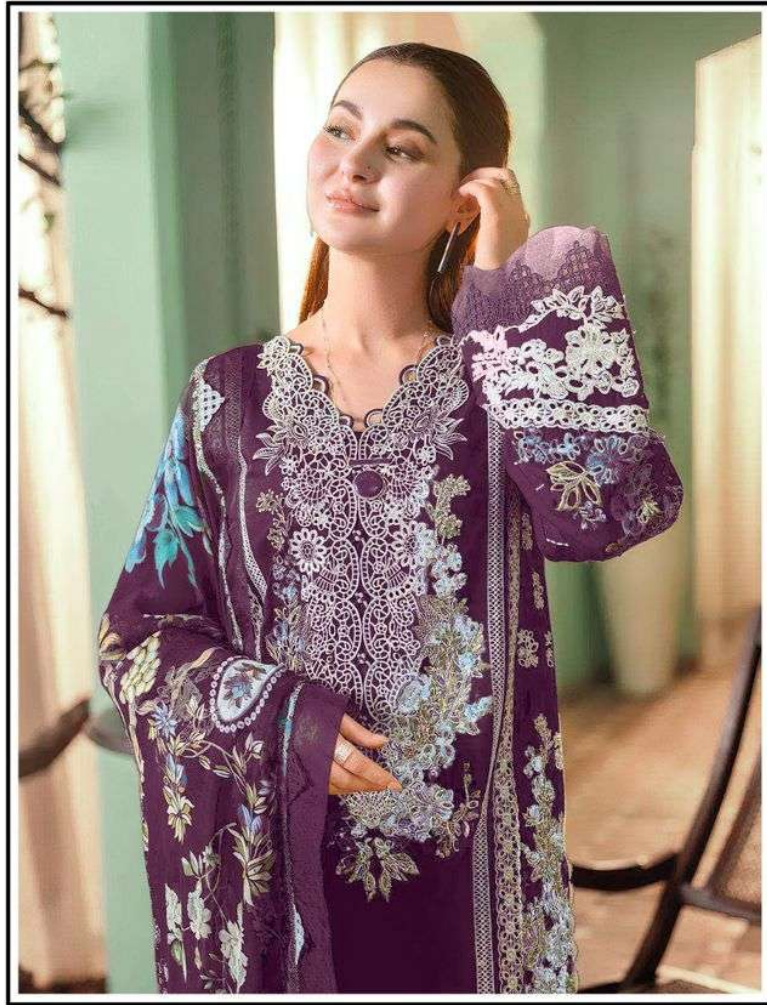
TOP Cambric cotton With Heavy Embroidery work **BOTTOM-INNER** Semi Lawn **DUPATTA** Cotton with Digital print



 **Alzohaib**TM

AZ-1234-B

TOP Cambric cotton With Heavy Embroidery work **BOTTOM-INNER** Semi Lawn **DUPATTA** Cotton with Digital print



 **Alzohaib**TM

AZ-1234-A

TOP Cambric cotton With Heavy Embroidery work **BOTTOM-INNER** Semi Lawn **DUPATTA** Cotton with Digital print



AZ-1234-A



AZ-1234-B



AZ-1234-C



AZ-1234-D