

A woman with long dark hair, wearing a purple lace dress and a matching dupatta, stands in front of a white wooden fence. She is looking upwards and to the right. The background shows a garden with colorful flowers.

SD
shraddha
DESIGNER

Needle Wonder

DUPATTA WORK COLLECTION VOL-01



1001 B







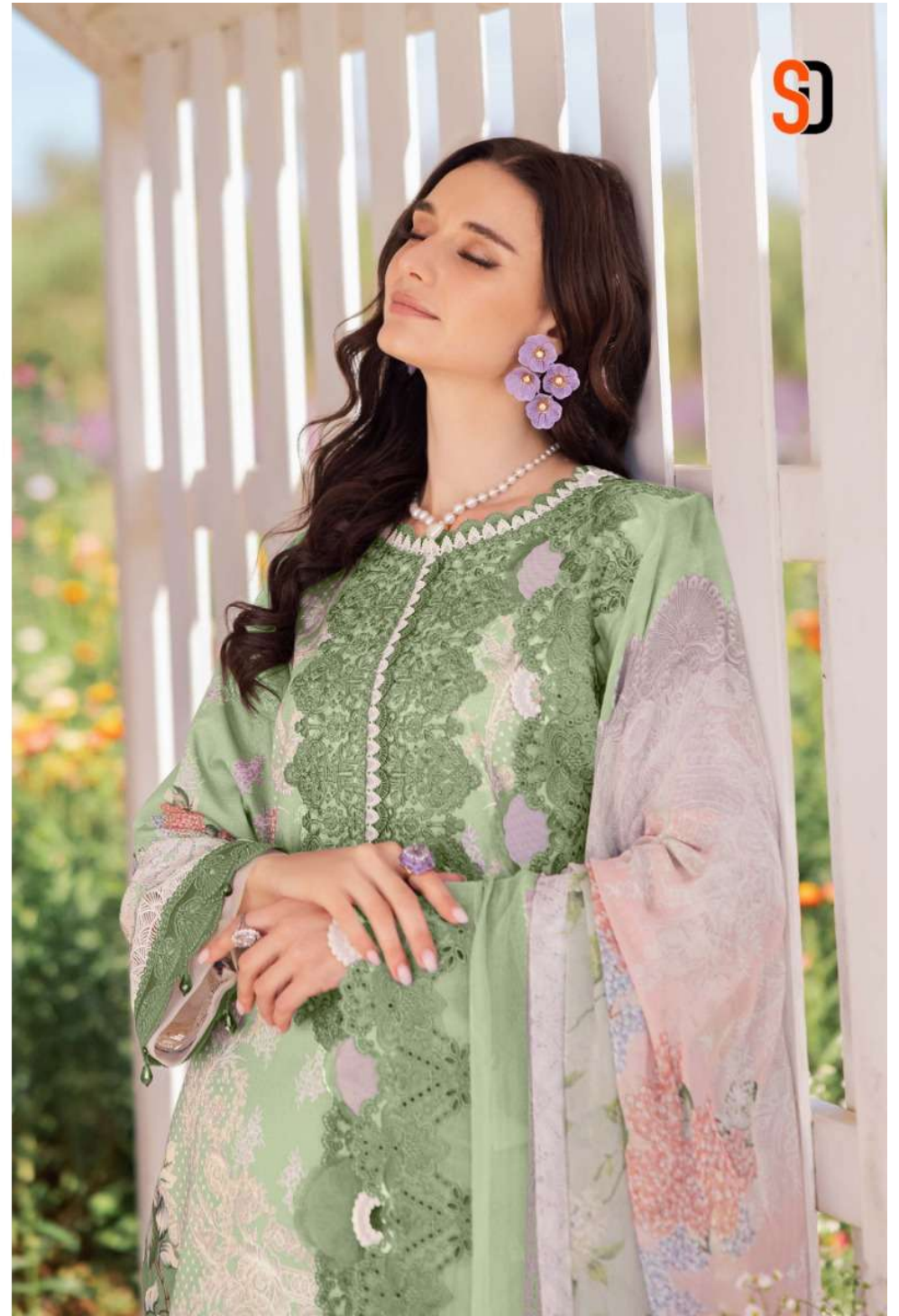
1001 A







1003 B





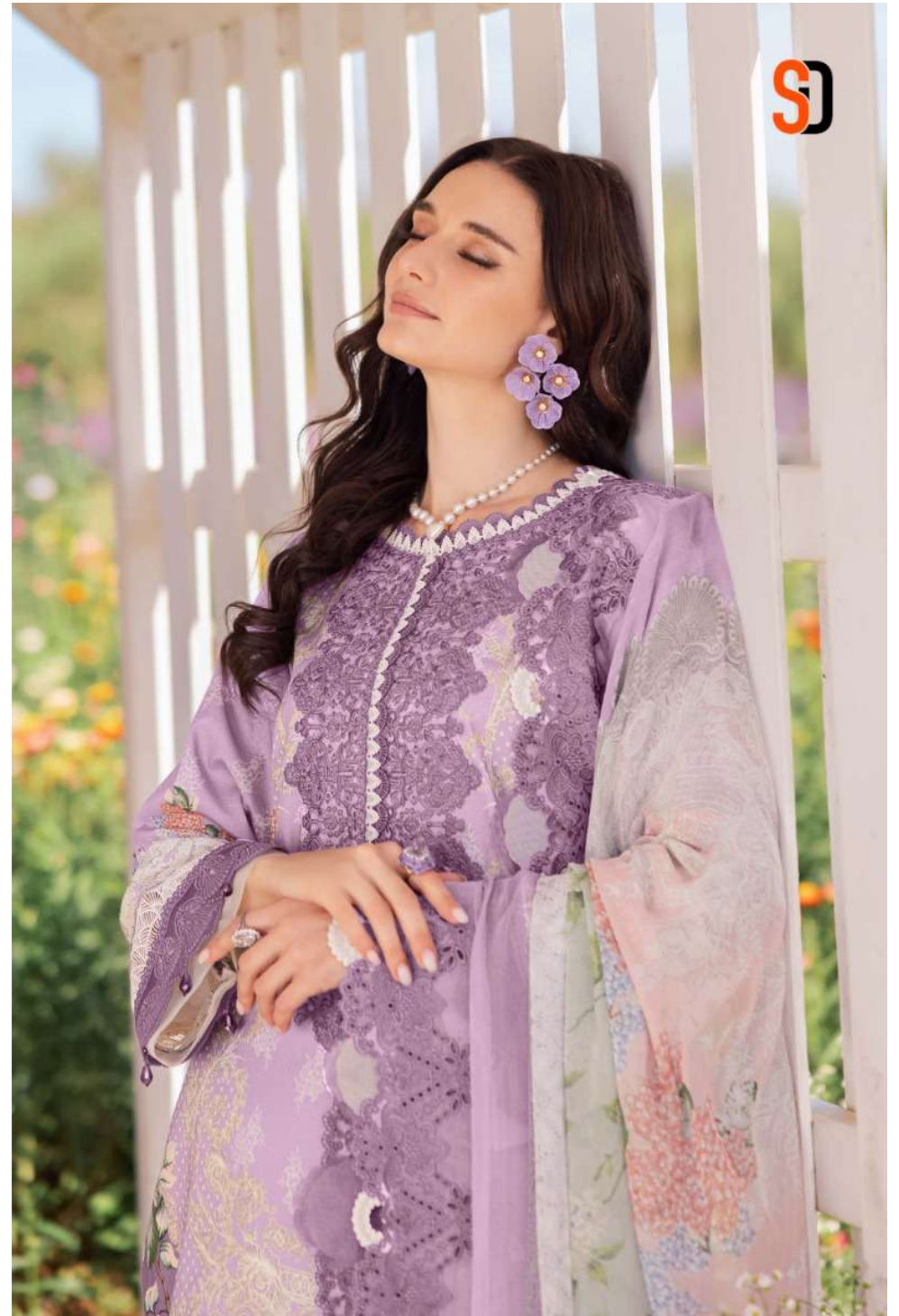


1002 A
❦





1003 A







1002 B







1001 A



1001 B



1003 A



1003 B



1002 A



1002 B



Needle Wonder
DUPATTA WORK COLLECTION VOL-01