





HOOR TEX



OR-85 A

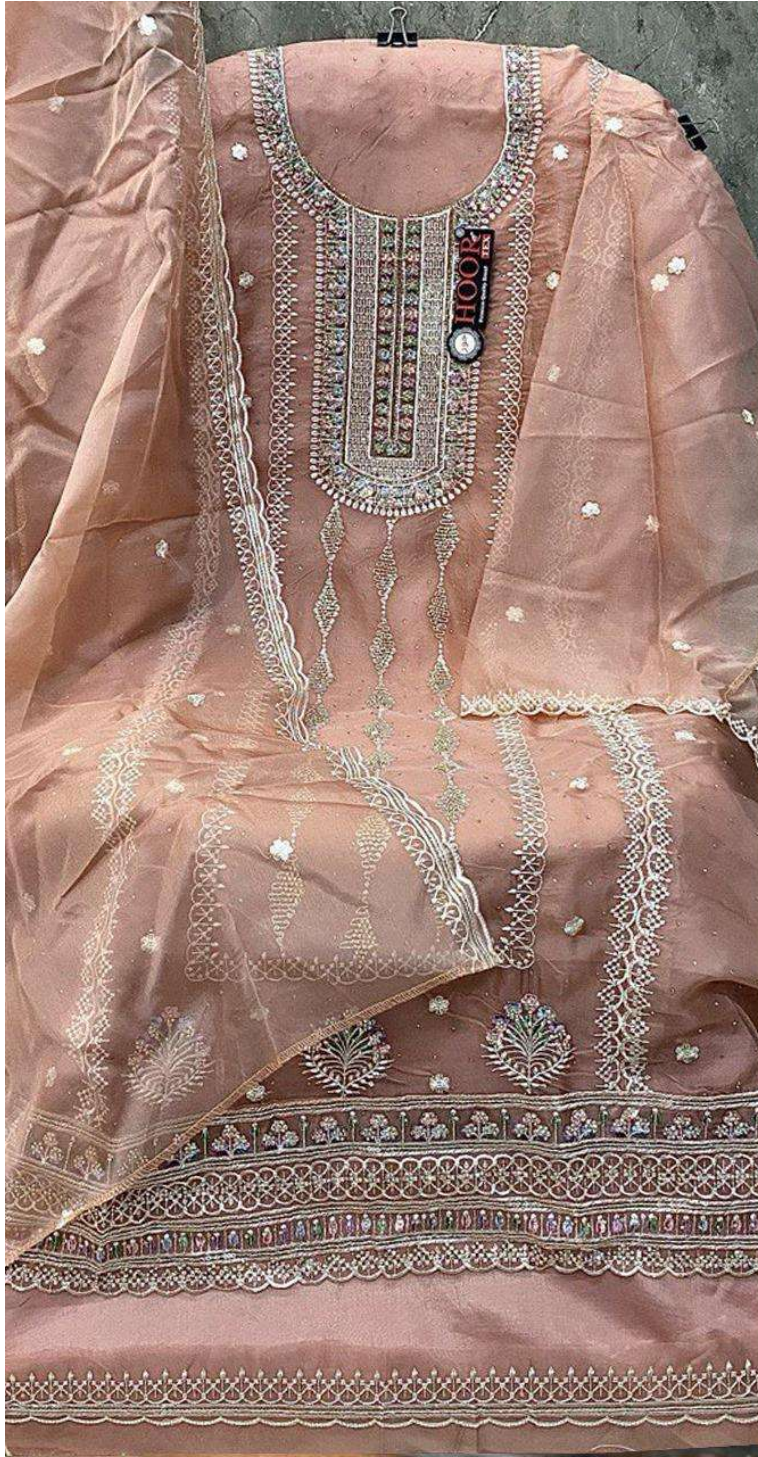
Top :- Heavy Organza With Khatli Work

Bottom/Inner :- Santoon

Dupatta :- Heavy Organza



☒ DRY CLEAN ONLY.
☒ DO NOT USE ANY BLEACH OR STAIN REMOVING CHEMICAL.
☒ IRON THE FABRIC AT MODERATE TEMPERATURE.



HOOR TEX

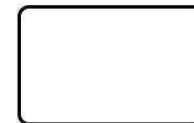


OR-85 B

Top :- Heavy Organza With Khatli Work

Bottom/Inner :- Santoon

Dupatta :- Heavy Organza



Ⓢ DRY CLEAN ONLY.
Ⓢ DO NOT USE ANY BLEACH OR STAIN REMOVING CHEMICAL.
Ⓢ IRON THE FABRIC AT MODERATE TEMPERATURE.



HOOR TEX



OR-85 C

Top :- Heavy Organza With Khatli Work

Bottom/Inner :- Santoon

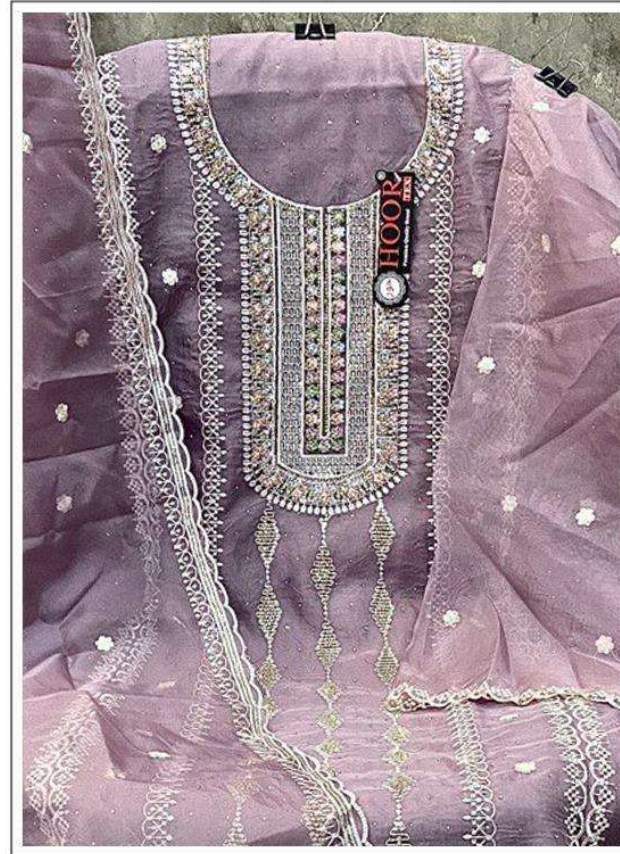
Dupatta :- Heavy Organza



Ⓢ DRY CLEAN ONLY.
Ⓢ DO NOT USE ANY BLEACH OR STAIN REMOVING CHEMICAL.
Ⓢ IRON THE FABRIC AT MODERATE TEMPERATURE.



HOOR TEX

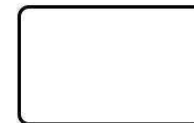


OR-85 D

Top :- Heavy Organza With Khatli Work

Bottom/Inner :- Santoon

Dupatta :- Heavy Organza



Ⓢ DRY CLEAN ONLY.
Ⓢ DO NOT USE ANY BLEACH OR STAIN REMOVING CHEMICAL.
Ⓢ IRON THE FABRIC AT MODERATE TEMPERATURE.



OR-85 A



OR-85 B



OR-85 C



OR-85 D



HOOR TEX