

Sajida[®]
DESIGNERS SUIT

SAMAIRA



D.No.1024



D.No.1025



D.No.1026

Sajida[®]
DESIGNERS SUIT

SAMAIRA



D.No.1024



D.No.1025



D.No.1026

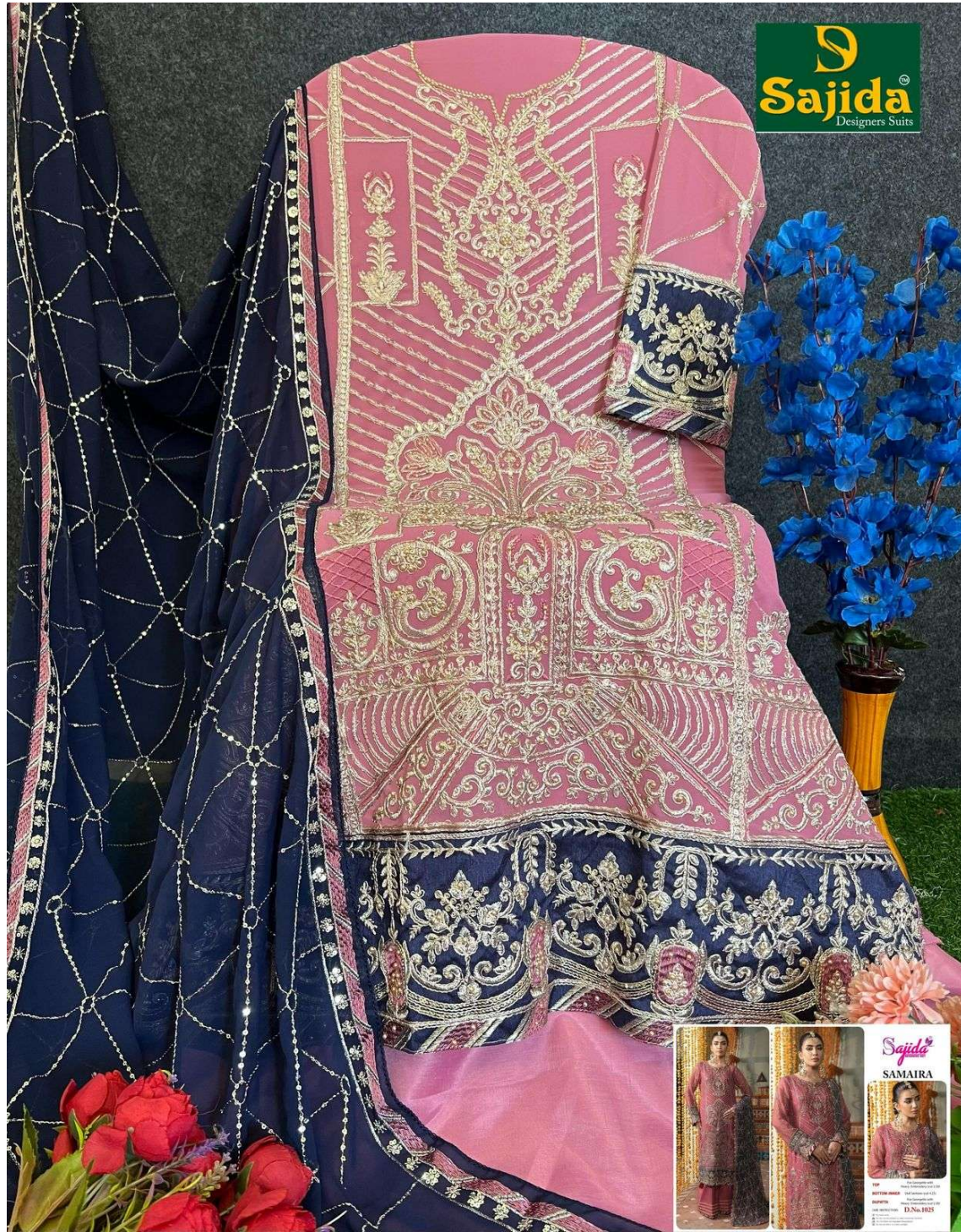
S
Sajida
Designers Suits



Sajida
SAMAIRA

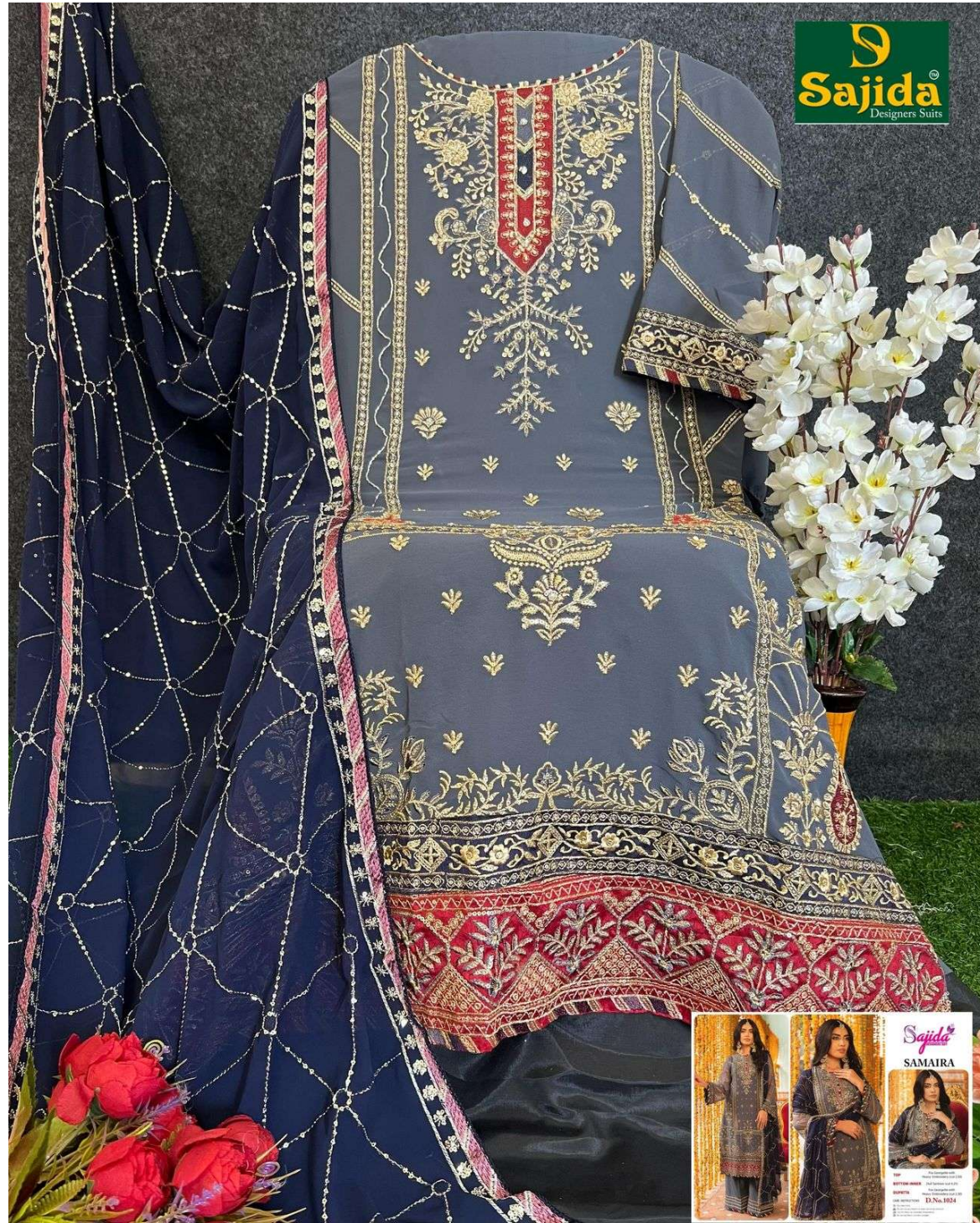
TOP: 100% Cotton
SKIRT: 100% Cotton
SHAWL: 100% Cotton
D.No-1036

S
Sajida
Designers Suits



Sajida
SAMAIRA
D.No.1825

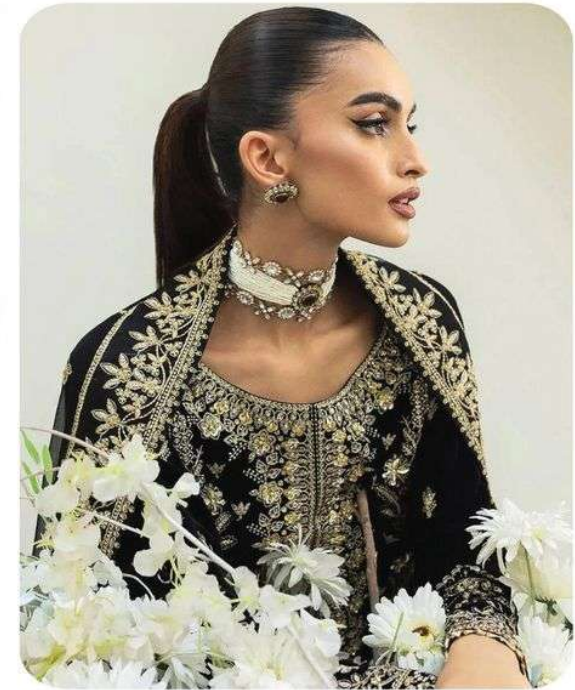
S
Sajida
Designers Suits





Sajida[®]
DESIGNERS SUIT

SAMAIRA



TOP Fox Georgette with Heavy Embroidery (cut 2.50)

BOTTOM-INNER Dull Santoon (cut 4.25)

DUPATTA Fox Georgette with Heavy Embroidery (cut 2.30)

CARE INSTRUCTIONS **D.No.1026**

- ☐ Dry clean only
- ⚠ Do not use any bleach or stain removing chemical
- ☐ Iron the fabric at moderate temperature
- ⊗ Do not dry fabric in direct sunlight



Sajida[®]
DESIGNERS SUIT

SAMAIRA

TOP

Fox Georgette with Heavy Embroidery (cut 2.50)

BOTTOM-INNER

Dull Santoon (cut 4.25)

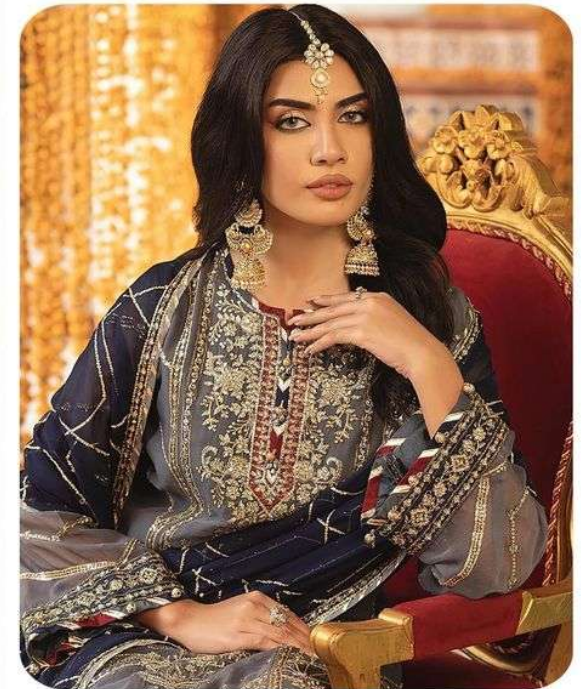
DUPATTA

Fox Georgette with Heavy Embroidery (cut 2.30)

CARE INSTRUCTIONS

D.No.1025

- Ⓟ Dry clean only
- ⚠ Do not use any bleach or stain removing chemical
- ☐ Iron the fabric at moderate temperature
- ⊗ Do not dry fabric in direct sunlight



Sajida[®]
DESIGNERS SUIT

SAMAIRA

TOP Fox Georgette with Heavy Embroidery (cut 2.50)

BOTTOM-INNER Dull Santoon (cut 4.25)

DUPATTA Fox Georgette with Heavy Embroidery (cut 2.30)

CARE INSTRUCTIONS **D.No.1024**

- Ⓟ Dry clean only
- ⚠ Do not use any bleach or stain removing chemical
- ☎ Iron the fabric at moderate temperature
- ⊗ Do not dry fabric in direct sunlight