

HF-157 D

Top :- Cristal Viscous

Bottom :- Cristal Viscous

Dupatta :- Heavy Organza



HOOR TEX

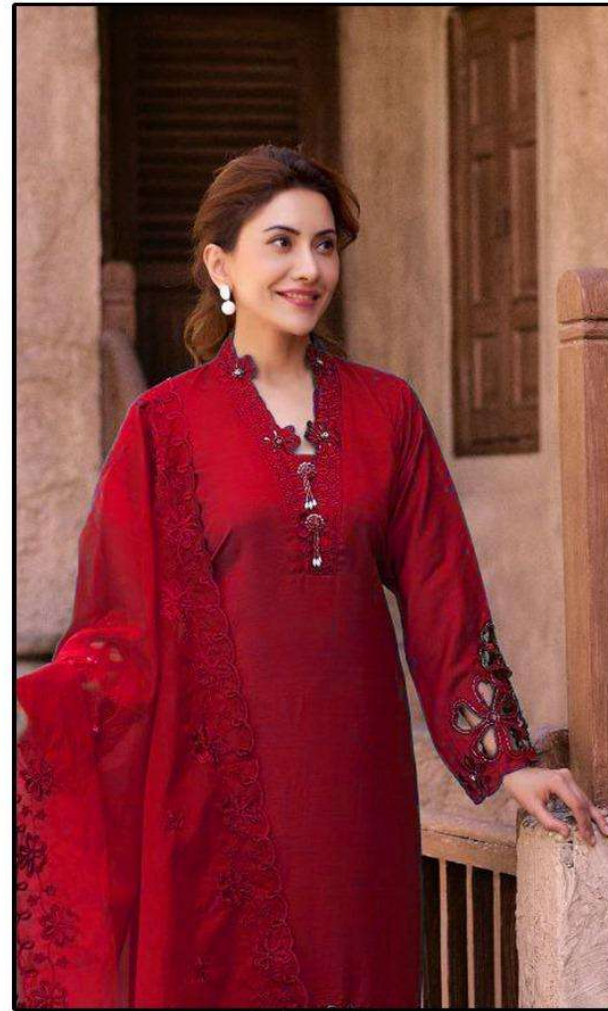
CARE INSTRUCTIONS

DRY CLEAN RECOMMENDED

DO NOT USE ANY TYPE OF BLEACH OR STAIN REMOVING CHEMICALS

DO NOT OVER EXPOSE DAMP FABRIC TO STRONG SUNLIGHT

IRON AT MODERATE TEMPERATURE



HF-157 A

Top :- Cristal Viscous

Bottom :- Cristal Viscous

Dupatta :- Heavy Organza



HOOR TEX

CARE INSTRUCTIONS

DRY CLEAN RECOMMENDED

DO NOT USE ANY TYPE OF BLEACH OR STAIN REMOVING CHEMICALS

DO NOT OVER EXPOSE DAMP FABRIC TO STRONG SUNLIGHT

IRON AT MODERATE TEMPERATURE





HF-157 B

Top :- Cristal Viscous

Bottom :- Cristal Viscous

Dupatta :- Heavy Organza



HOOR TEX

CARE INSTRUCTIONS

DRY CLEAN RECOMMENDED
DO NOT USE ANY TYPE OF BLEACH OR STAIN REMOVING CHEMICALS
DO NOT OVER EXPOSE DAMP FABRIC TO STRONG SUNLIGHT
IRON AT MODERATE TEMPERATURE





HF-157 C

Top :- Cristal Viscous

Bottom :- Cristal Viscous

Dupatta :- Heavy Organza



HOOR TEX

CARE INSTRUCTIONS

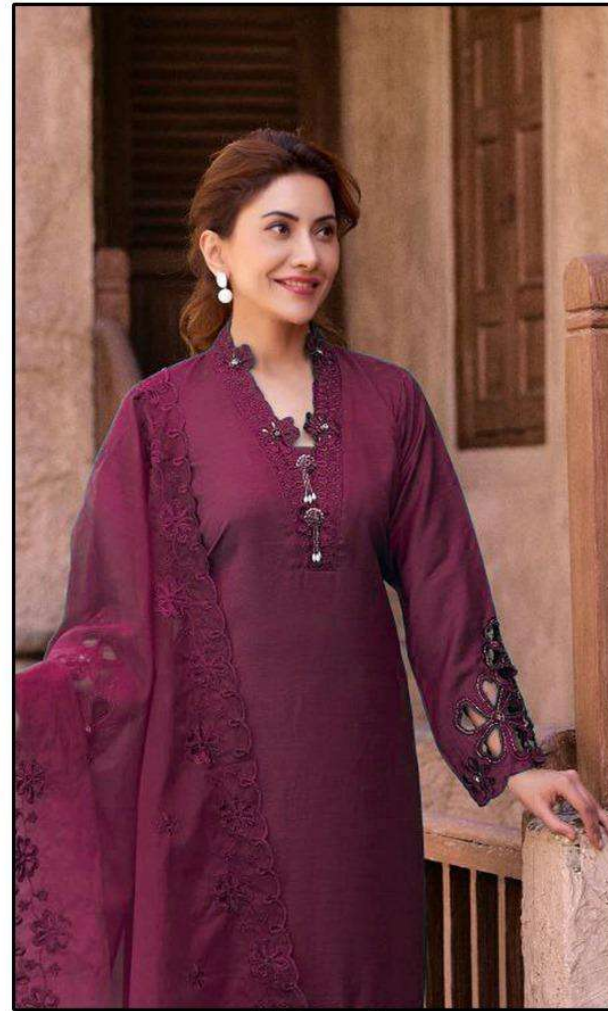
DRY CLEAN RECOMMENDED

DO NOT USE ANY TYPE OF BLEACH OR STAIN REMOVING CHEMICALS

DO NOT OVER EXPOSE DAMP FABRIC TO STRONG SUNLIGHT

IRON AT MODERATE TEMPERATURE





HF-157 D

*Top :- Cristal Viscous
Bottom :- Cristal Viscous
Dupatta :- Heavy Organza*

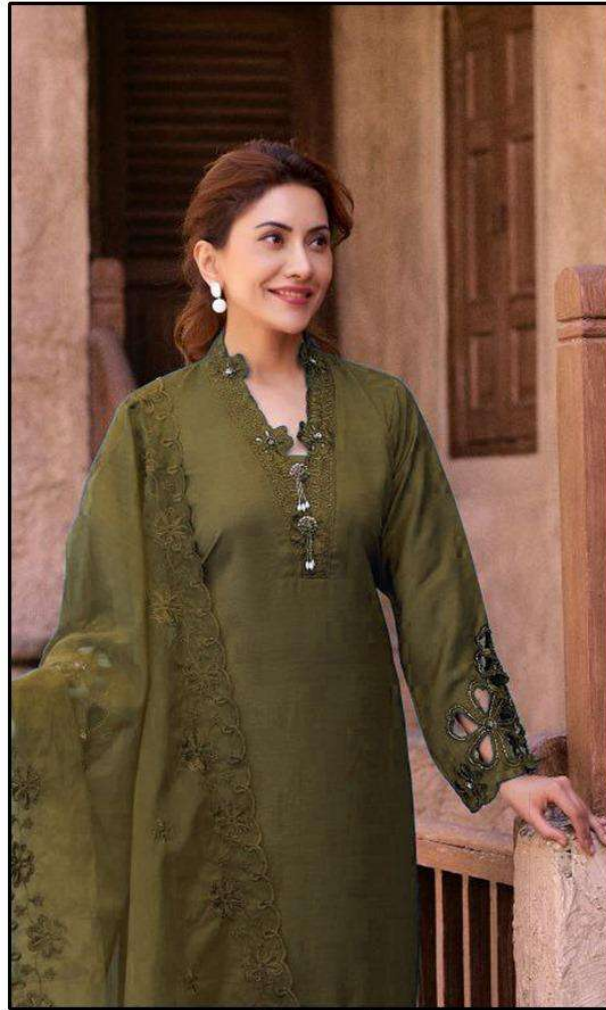


HOOR TEX

CARE INSTRUCTIONS

DRY CLEAN RECOMMENDED
DO NOT USE ANY TYPE OF BLEACH OR STAIN REMOVING CHEMICALS
DO NOT OVER EXPOSE DAMP FABRIC TO STRONG SUNLIGHT
IRON AT MODERATE TEMPERATURE





HF-157 E

Top :- Cristal Viscous

Bottom :- Cristal Viscous

Dupatta :- Heavy Organza



HOOR TEX

CARE INSTRUCTIONS

DRY CLEAN RECOMMENDED

DO NOT USE ANY TYPE OF BLEACH OR STAIN REMOVING CHEMICALS

DO NOT OVER EXPOSE DAMP FABRIC TO STRONG SUNLIGHT

IRON AT MODERATE TEMPERATURE





HF-157 A



HF-157 B



HF-157 C



HOOR TEX



HF-157 D



HF-157 E

HOOR TEX

