



D.No: 1011



D.No: 1012



ALAYA-2

- TOP** Hevay Fox Georgette embroidery with Khatli work (cut 2.50)
- BOTTOM-INNER** Dull Santoon (cut 4.25)
- DUPATTA** Hevay Fox Georgette embroidery work (cut 2.30)

CARE INSTRUCTIONS

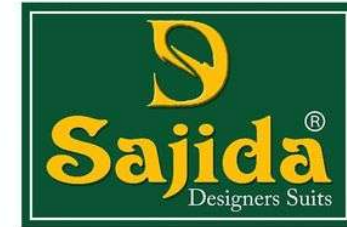
- ☐ Dry clean only
- ☒ Do not use any bleach or stain removing chemical
- ☒ Iron the fabric at moderate temperature
- ☒ Do not dry fabric in direct sunlight



D.No: 1011



D.No: 1012

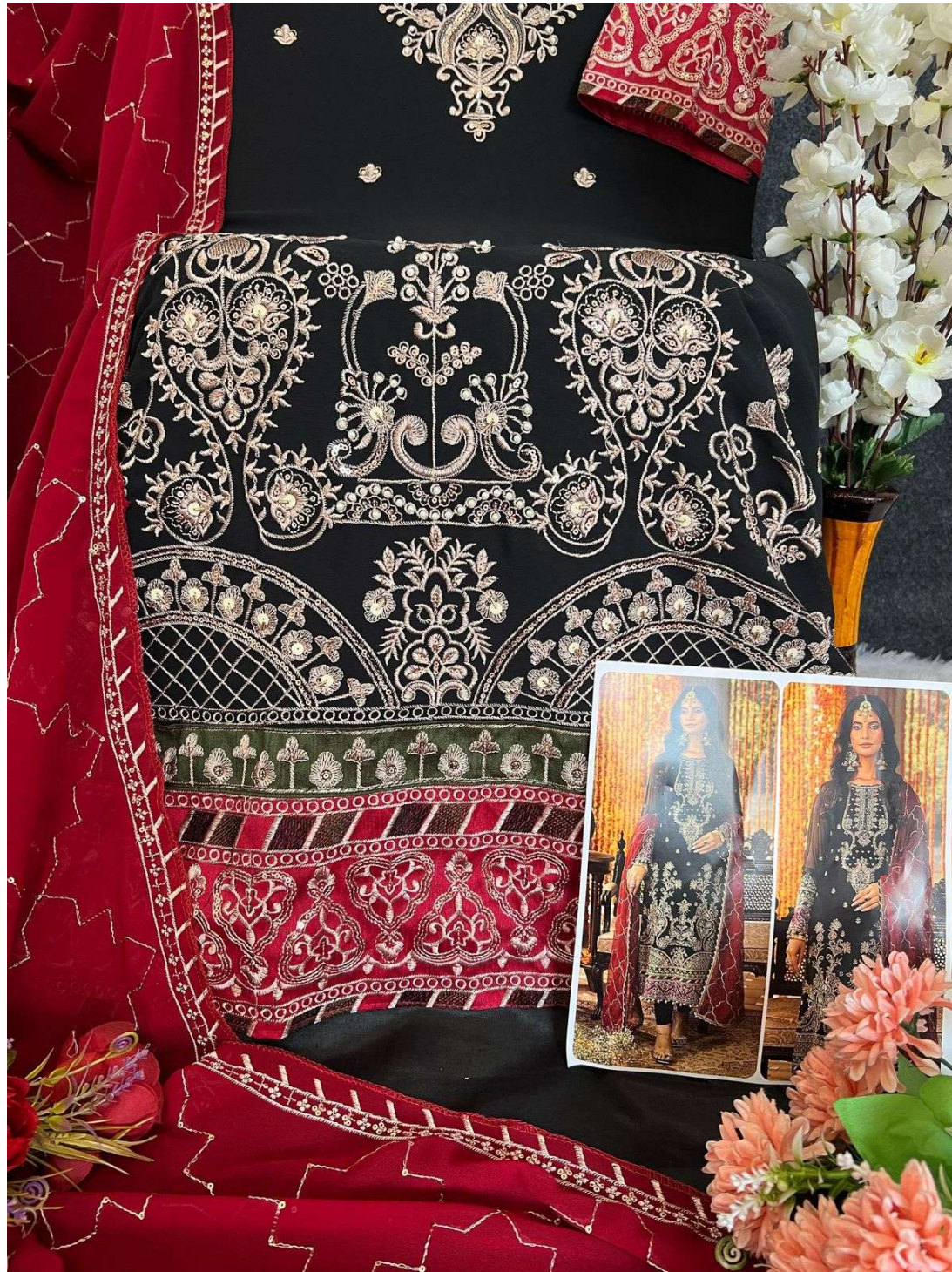


ALAYA-2

- TOP** Hevay Fox Georgette embroidery with Khatli work (cut 2.50)
- BOTTOM-INNER** Dull Santoon (cut 4.25)
- DUPATTA** Hevay Fox Georgette embroidery work (cut 2.30)

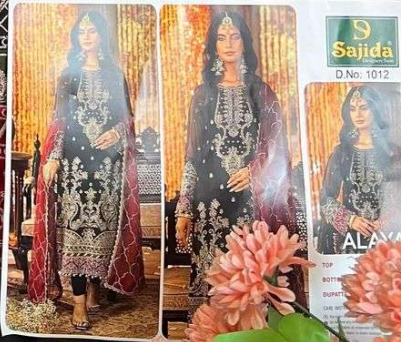
CARE INSTRUCTIONS

- ☐ Dry clean only
- ☒ Do not use any bleach or stain removing chemical
- ☒ Iron the fabric at moderate temperature
- ☒ Do not dry fabric in direct sunlight





S
Sajida
Designers Suits

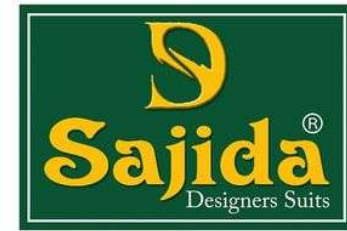




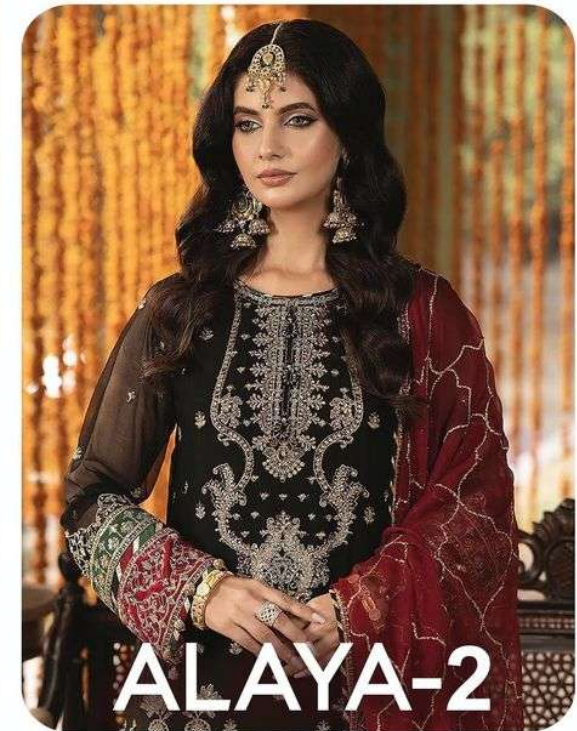


S
Sajida[™]
Designers Suits





D.No: 1012



TOP

Heavy Fox Georgette embroidery with Khatli work (cut 2.50)

BOTTOM-INNER

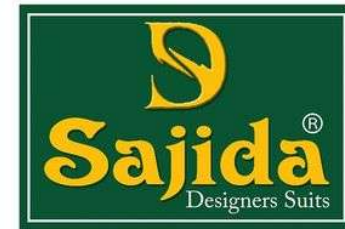
Dull Santoon (cut 4.25)

DUPATTA

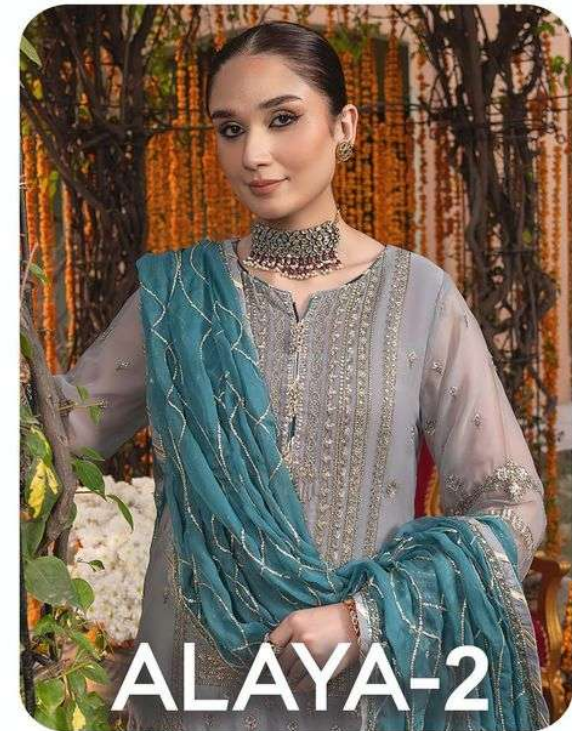
Heavy Fox Georgette embroidery work (cut 2.30)

CARE INSTRUCTIONS

- Ⓟ Dry clean only
- ⚠ Do not use any bleach or stain removing chemical
- ☎ Iron the fabric at moderate temperature
- ⊗ Do not dry fabric in direct sunlight



D.No: 1011



TOP

Heavy Fox Georgette embroidery with Khatli work (cut 2.50)

BOTTOM-INNER

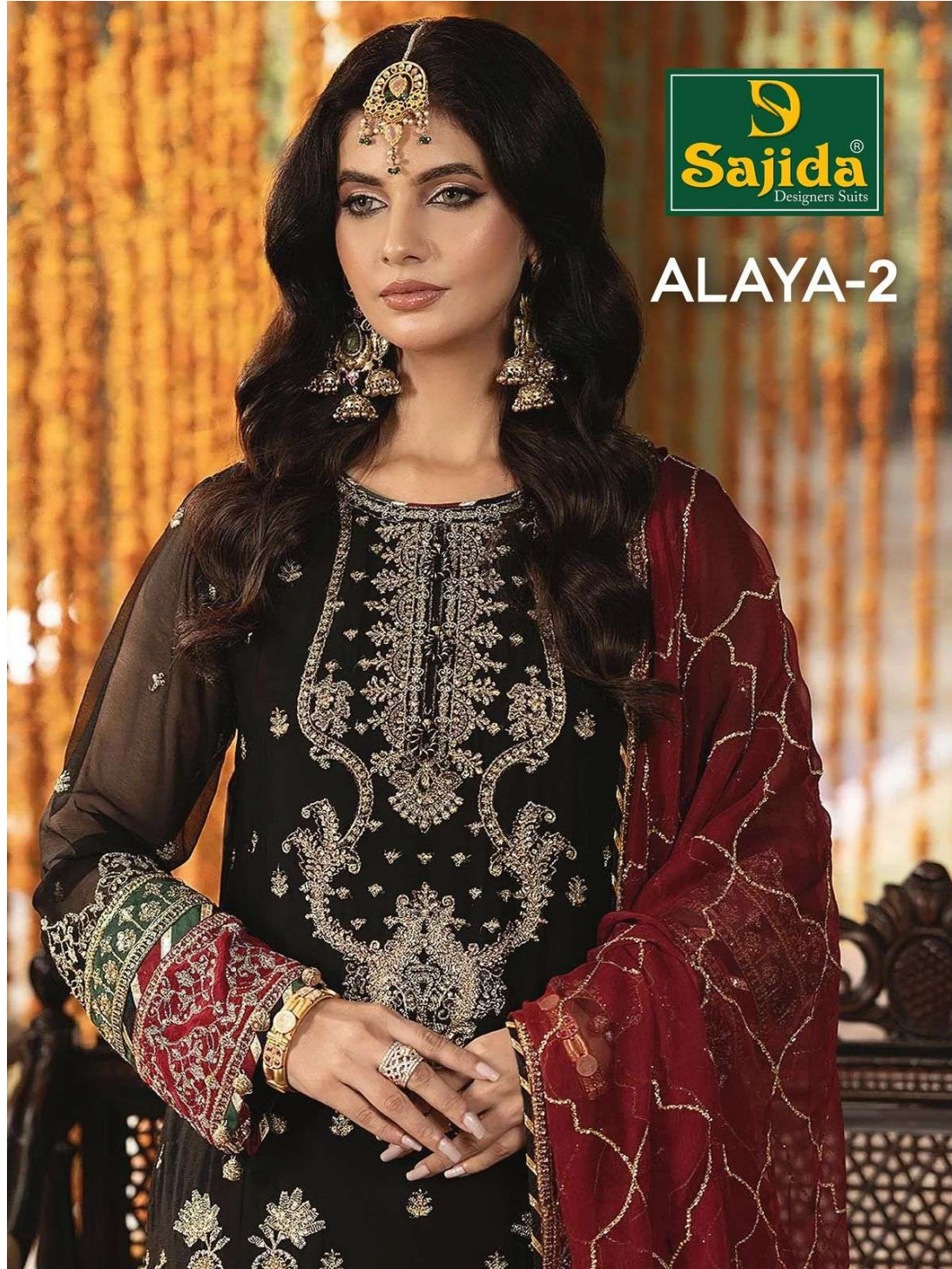
Dull Santoon (cut 4.25)

DUPATTA

Heavy Fox Georgette embroidery work (cut 2.30)

CARE INSTRUCTIONS

- ☐ Dry clean only
- ⚠ Do not use any bleach or stain removing chemical
- ☐ Iron the fabric at moderate temperature
- ☒ Do not dry fabric in direct sunlight



ALAYA-2