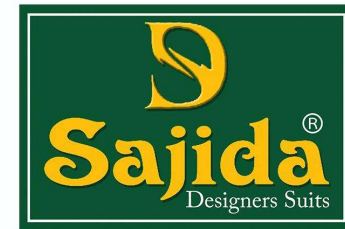
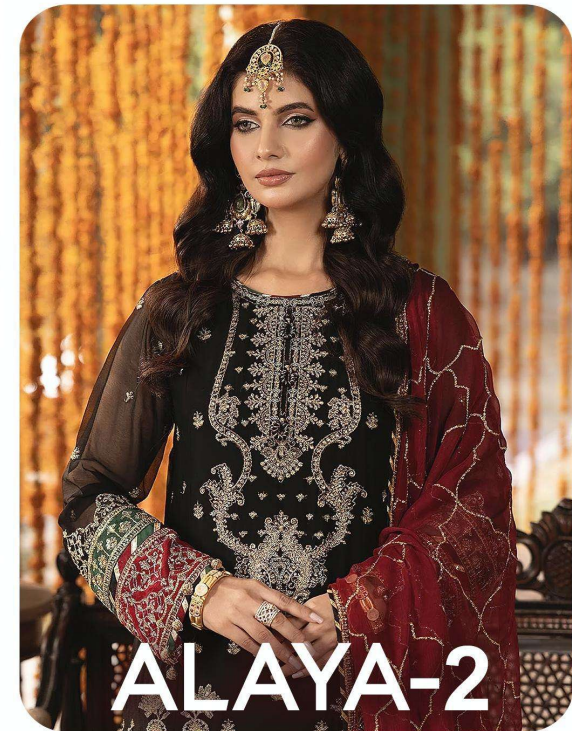


ALAYA-2



D.No: 1012



**TOP**

Heavy Fox Georgette embroidery with Khatli work (cut 2.50)

**BOTTOM-INNER**

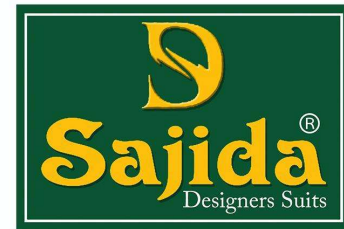
Dull Santoon (cut 4.25)

**DUPATTA**

Heavy Fox Georgette embroidery work (cut 2.30)

**CARE INSTRUCTIONS**

- ☐ Dry clean only
- ⚠ Do not use any bleach or stain removing chemical
- ☐ Iron the fabric at moderate temperature
- ☒ Do not dry fabric in direct sunlight



D.No: 1011



**TOP**

Heavy Fox Georgette embroidery with Khatli work (cut 2.50)

**BOTTOM-INNER**

Dull Santoon (cut 4.25)

**DUPATTA**

Heavy Fox Georgette embroidery work (cut 2.30)

**CARE INSTRUCTIONS**

- ☐ Dry clean only
- ⚠ Do not use any bleach or stain removing chemical
- ☐ Iron the fabric at moderate temperature
- ☒ Do not dry fabric in direct sunlight



D.No: 1011



D.No: 1012



## ALAYA-2

- TOP** Hevay Fox Georgette embroidery with Khatli work (cut 2.50)
- BOTTOM-INNER** Dull Santoon (cut 4.25)
- DUPATTA** Hevay Fox Georgette embroidery work (cut 2.30)

### CARE INSTRUCTIONS

- ☐ Dry clean only
- ☒ Do not use any bleach or stain removing chemical
- ☒ Iron the fabric at moderate temperature
- ☒ Do not dry fabric in direct sunlight