

JOHRA TEX



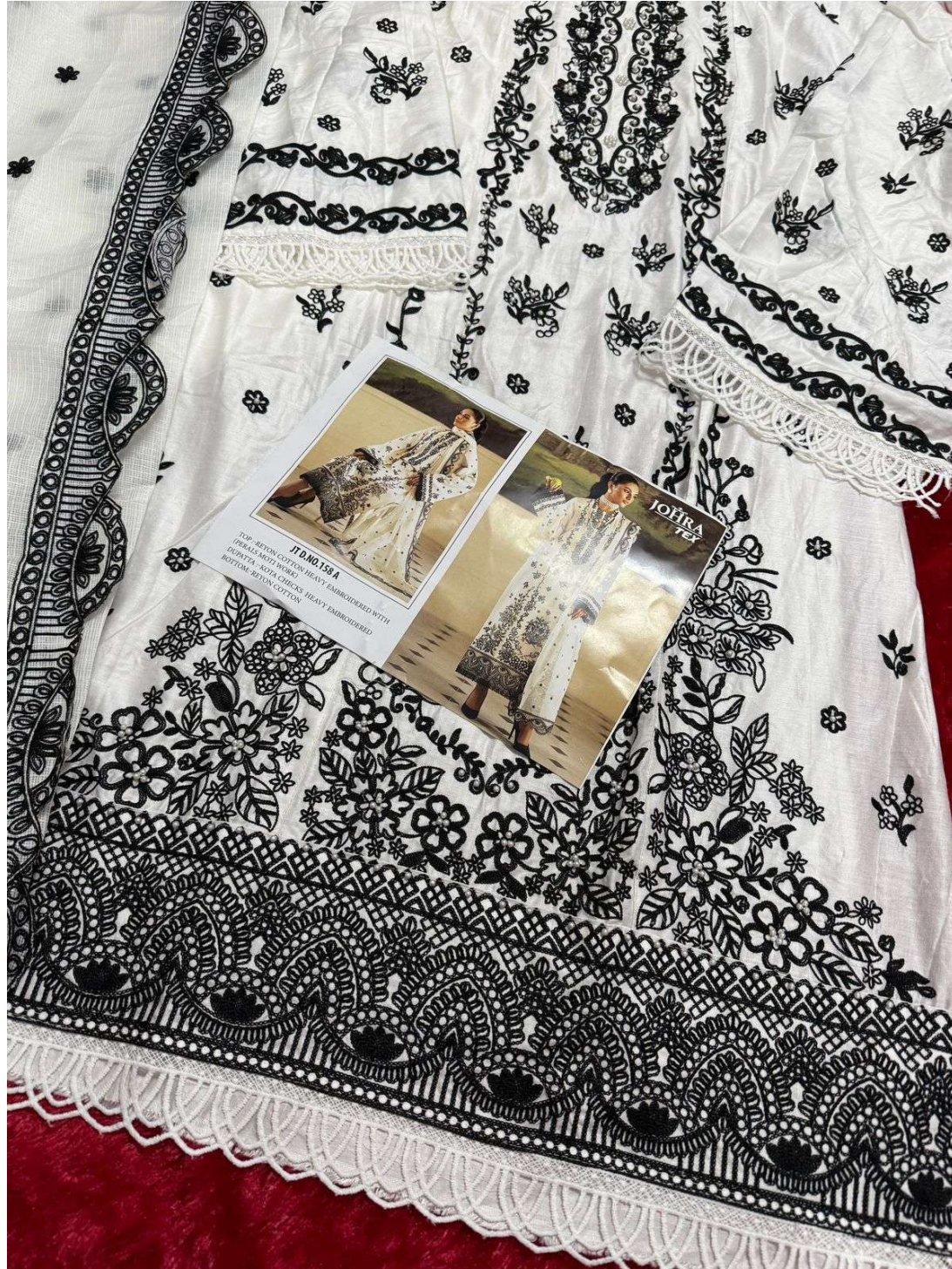
JT D.NO.158 A



JT D.NO.158 B

TOP :-REYON COTTON HEAVY EMBROIDERED WITH (PERALS MOTI WORK) DUPATTA :-KOTA CHECKS HEAVY EMBROIDERED
BOTTOM:-REYON COTTON



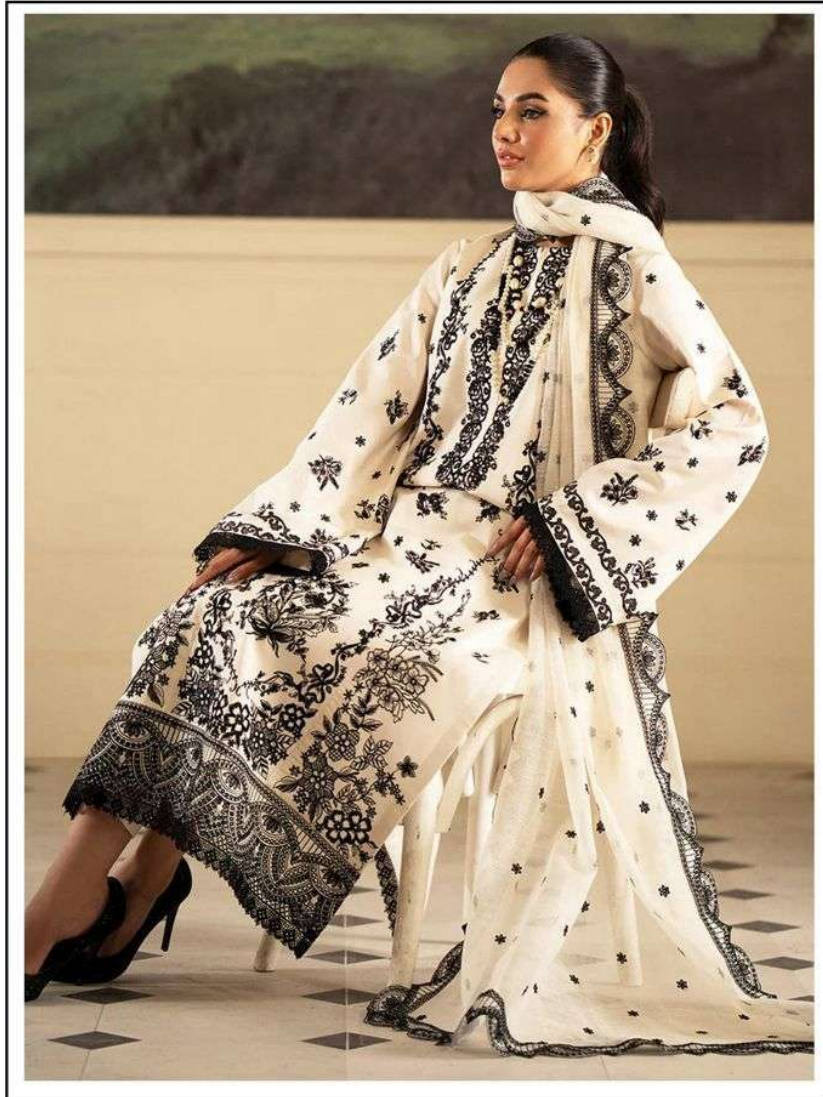


JTD.MO.158 A
TOP: SATIN COTTON HEAVY EMBROIDERED WITH
FRILLS AND TWIN WORK
SLEEVES: RITA CROCHES HEAVY EMBROIDERED
BOTTOM: SATIN COTTON



JT D.NO.158 A
TOP- REYON COTTON HEAVY EMBROIDERED WITH
OPRAIS MOTI WORK
DUBAI - ISLA CHECKS HEAVY EMBROIDERED
BOTTOM- REYON COTTON





JT D.NO.158 A

TOP :-REYON COTTON HEAVY EMBROIDERED WITH (PERALS MOTI WORK)

DUPATTA :-KOTA CHECKS HEAVY EMBROIDERED

BOTTOM:-REYON COTTON





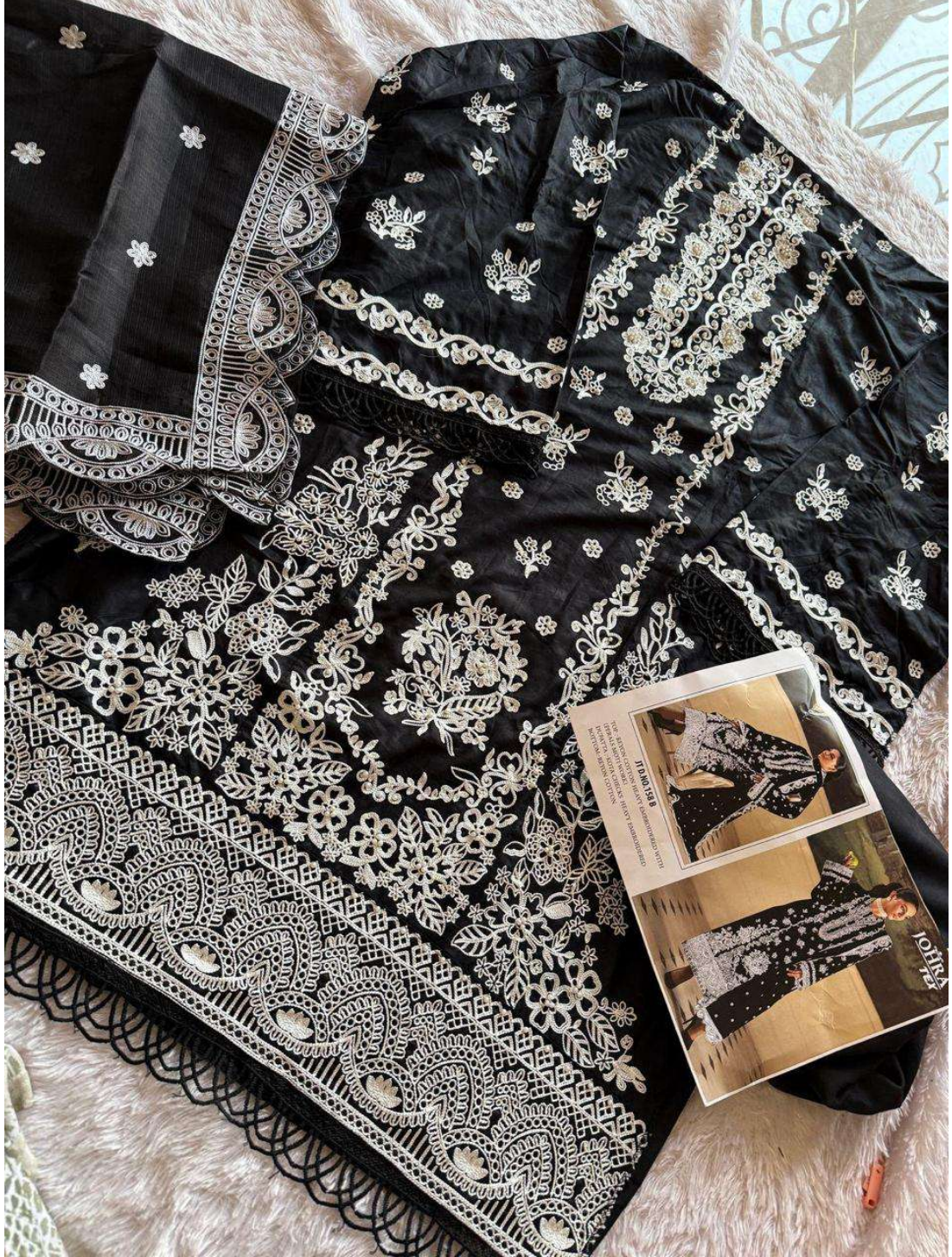
JT D.NO.158 B

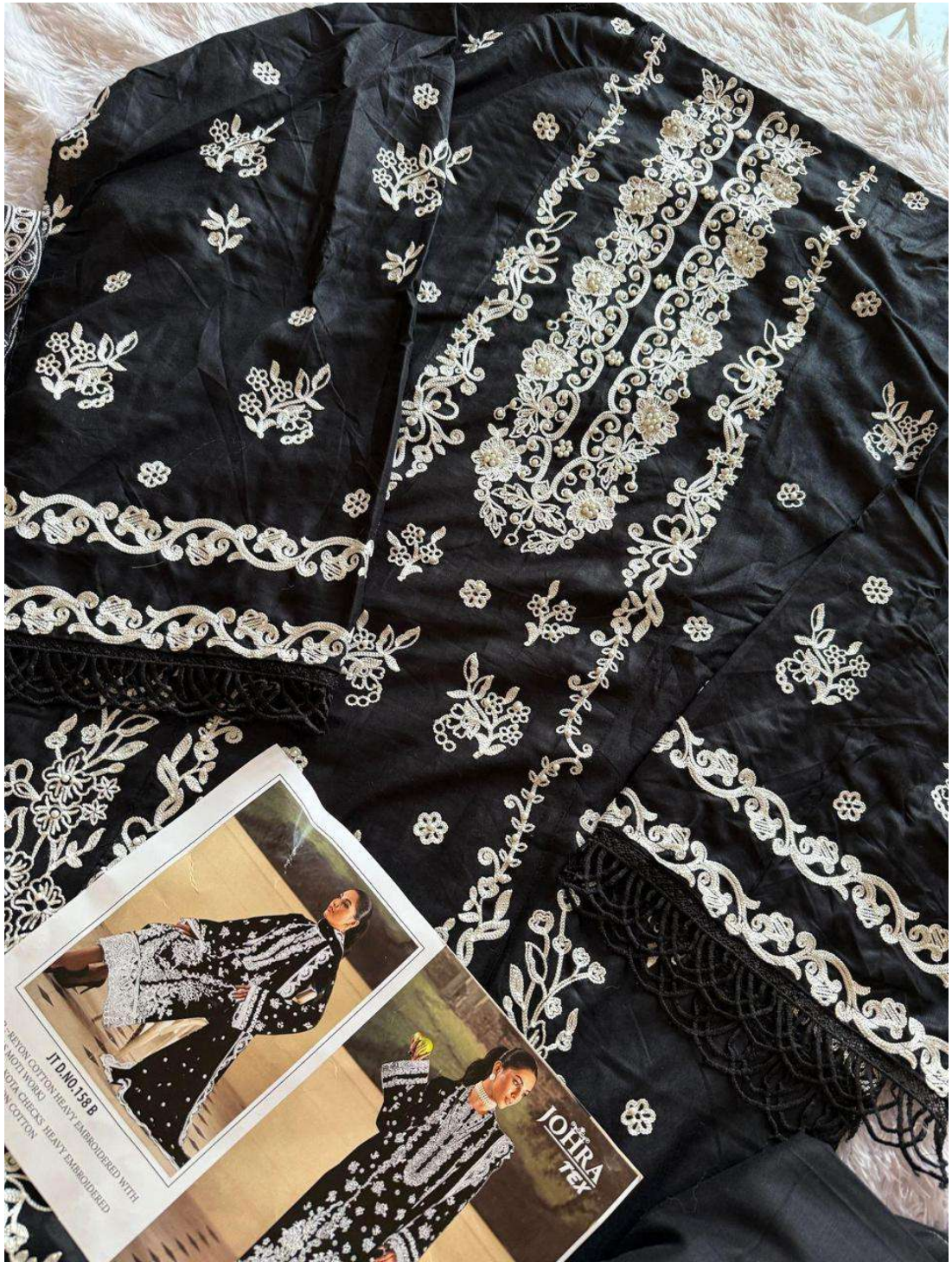
TOP :-REYON COTTON HEAVY EMBROIDERED WITH (PERALS MOTI WORK)

DUPATTA :-KOTA CHECKS HEAVY EMBROIDERED

BOTTOM:-REYON COTTON







JOHRA
72x

VARIGON COTTON HEAVY EMBROIDERED WITH
AND NOT WORKS
KOTA CHECKS HEAVY EMBROIDERED
COTTON

JTD NO. 158 B



TOP: HEAVY COTTON HEAVY EMBROIDERED WITH
DUSTY PINK CORDS
BOTTOM: HEAVY COTTON
JOHNA
JD NO. 158 B