

  
FLORENT®



D.NO.1010



D.NO.1011



D.NO.1012







FLORENT®



D.NO.1012

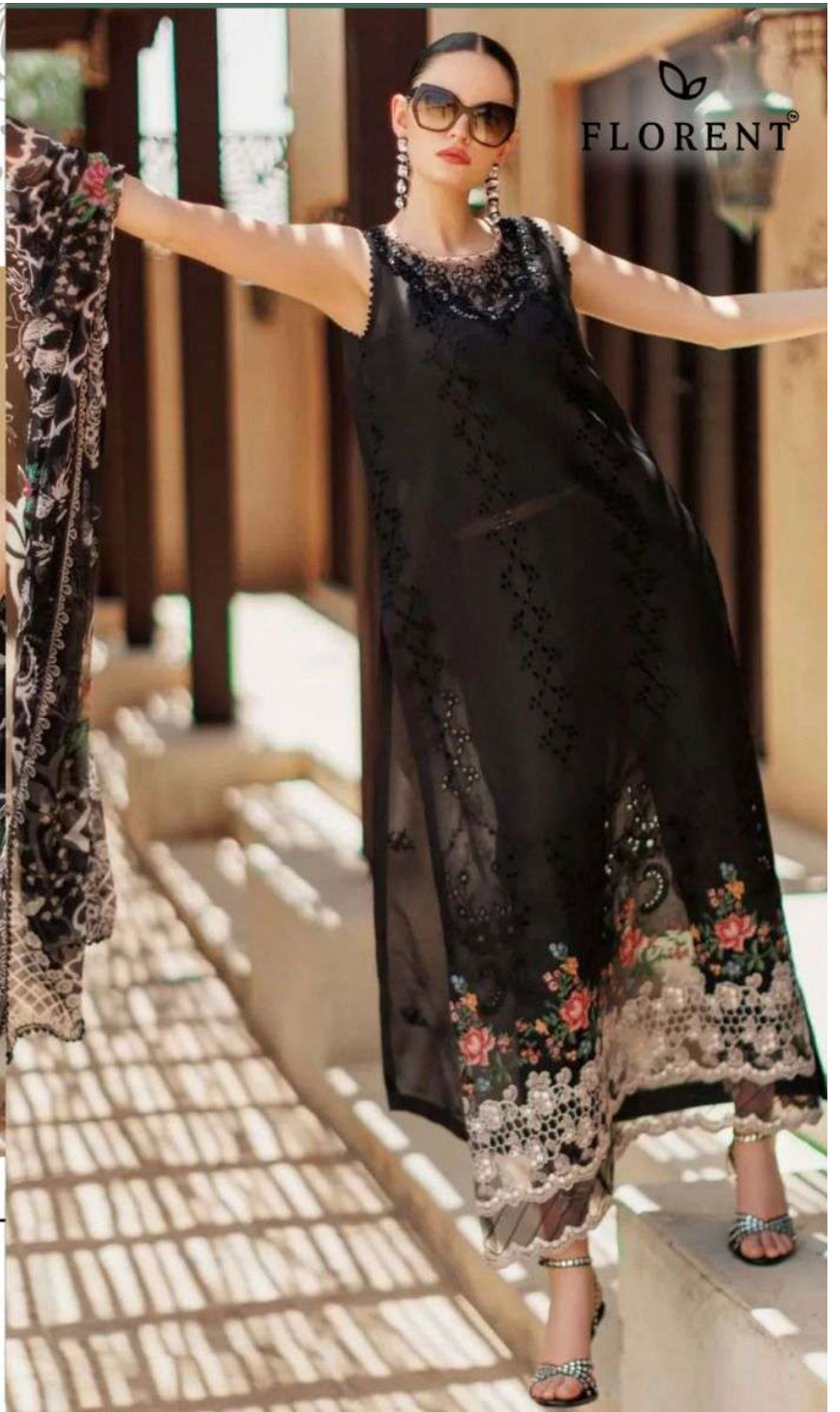


FLORENT®





FLORENT®



FLORENT®

D.NO.1011





FLORENT®



D.NO.1010



FLORENT®



A woman with dark hair pulled back, wearing a vibrant yellow sleeveless dress with intricate floral and lace detailing. She is adorned with a necklace, earrings, and bracelets. Her right hand is raised to her chin, and her left hand rests on her hip. The background is a shimmering, textured gold fabric.

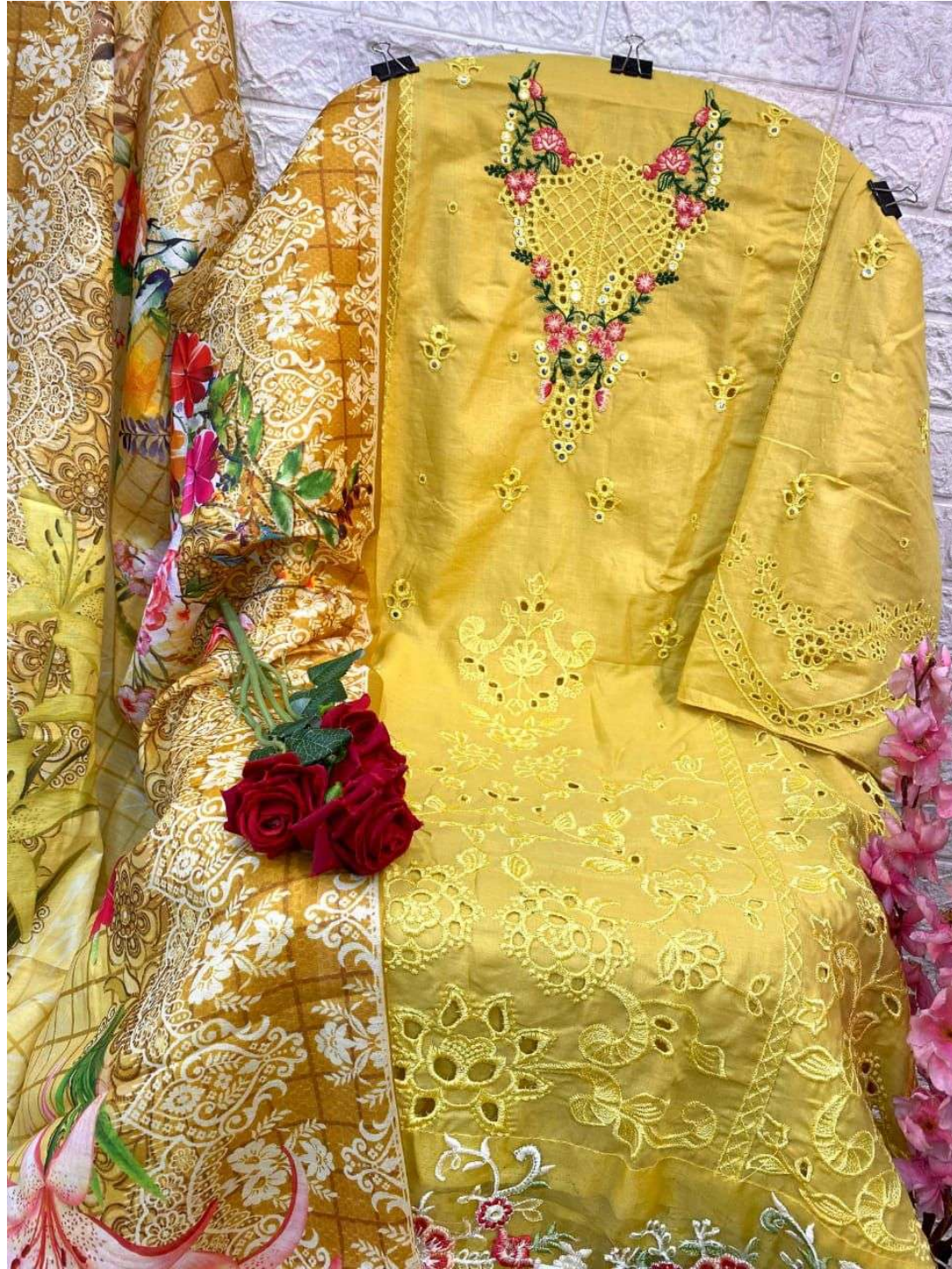
FLORENT®

**NOOR BY SAADIAA**  
Vol-01









  
FLORENT®



D.NO.1010



D.NO.1011



D.NO.1012