

# ZAINAB CHOTTANI

**TOP** Faux Georgette  
with Embroidery

**BOTTOM-INNER**  
Dull santoon



# ZAHA

**DUPATTA** Faux Georgette  
with Embroidery



10233



10234



10235

# ZAINAB CHOTTANI

**TOP** Faux Georgette  
with Embroidery

**BOTTOM-INNER**  
Dull santoon



# ZAHA

**DUPATTA** Faux Georgette  
with Embroidery



10233



10234



10235



TOP Faux Georgette with Embroidery (Cut-2.5 Mtr.)  
BOTTOM-INN

Z/A



**ZAHA** D.N  
TOP: Faux Georgette with Embroidery (Curt 2.5 Mtr.)  
BOTTOM: INNER: Chiffon (Curt. 1.5 Mtr.)



TOP: Filux Georgette with Embroidery (40% Cotton)  
BOTTOM: INIER (100% Cotton)

**ZAHA**



Faux Georgette with Embroidery  
TOP BOTTOM



**ZAH**  
TOP: Faux Georgette with Embroidery (Cut 2 & Mir.)  
BOTTOM-INNER



**ZAHA** D.No  
TOP: Faux Georgette with Embroidery (Cut: 2.5 Mtr.)  
BOTTOM-INNER: Dull Satin (Cut: 2.0 Mtr.)  
DUP: Dull Satin (Cut: 2.0 Mtr.)



**ZAINAB  
CHOTTANI**

**TOP** Faux Georgette  
with Embroidery  
(Cut-2.5 Mtr )

**ZAHA**

**BOTTOM-INNER** Dull santoon  
(Cut-4.20 Mtr )

**D.No.10234**

**DUPATTA** Faux Georgette  
with Embroidery  
(Cut-2.5 Mtr )



**ZAINAB**  
CHOTTANI

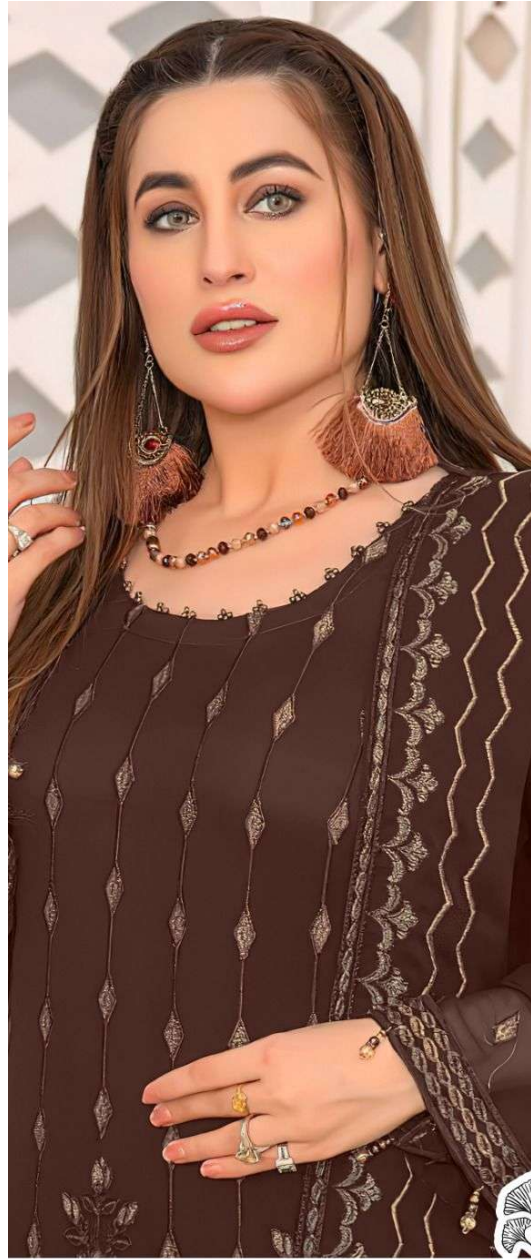
**TOP** Faux Georgette  
with Embroidery  
(Cut-2.5 Mtr)

**ZAHA**

**BOTTOM-INNER** Dull santoon  
(Cut-4.20 Mtr)

**D.No.10235**

**DUPATTA** Faux Georgette  
with Embroidery  
(Cut-2.5 Mtr)



**ZAINAB  
CHOTTANI**

**TOP** Faux Georgette  
with Embroidery  
(Cut-2.5 Mtr)

**ZAHA**

**BOTTOM-INNER** Dull santoon  
(Cut-4.20 Mtr)

**D.No.10233**

**DUPATTA** Faux Georgette  
with Embroidery  
(Cut-2.5 Mtr)



ZAHA

ZAINAB  
CHOTTANI