

JOHRA TEX



JT D.NO.139 A

**TOP - ORGENZA WITH HEAVY EMBROIDERY
(WITE PERALS MOTI WORK)**

BOTTOM - DULL SANTON

DUPATTA - ORGENZA WITH HEAVY EMBROIDERY







JOHRA
TEX

17.12.19.01.119.01
EMBROIDERY WITH HEAVY EMBROIDERY
17.12.19.01.119.01
EMBROIDERY WITH HEAVY EMBROIDERY



JOHRA TEX



JT D.NO.139 D

**TOP - ORGENZA WITH HEAVY EMBROIDERY
(WITE PERALS MOTI WORK)**

BOTTOM - DULL SANTON

DUPATTA - ORGENZA WITH HEAVY EMBROIDERY



JOHRA TEX



JT D.NO.139 B

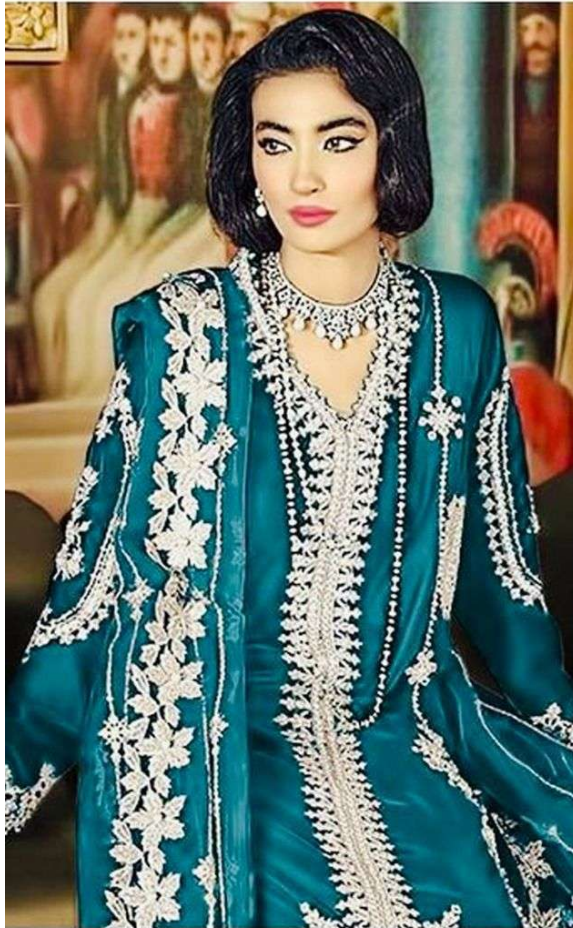
**TOP - ORGENZA WITH HEAVY EMBROIDERY
(WITE PERALS MOTI WORK)**

BOTTOM - DULL SANTON

DUPATTA - ORGENZA WITH HEAVY EMBROIDERY



JOHRA TEX



JT D.NO.139 A

**TOP - ORGENZA WITH HEAVY EMBROIDERY
(WITE PERALS MOTI WORK)**

BOTTOM - DULL SANTON

DUPATTA - ORGENZA WITH HEAVY EMBROIDERY

