

BelliZa®
Designer Studio

SHAHEEN





TRENDING
COLLECTION

"What you wear is how you present yourself to the world, especially today, when human contacts are so quick. Fashion is instant language."



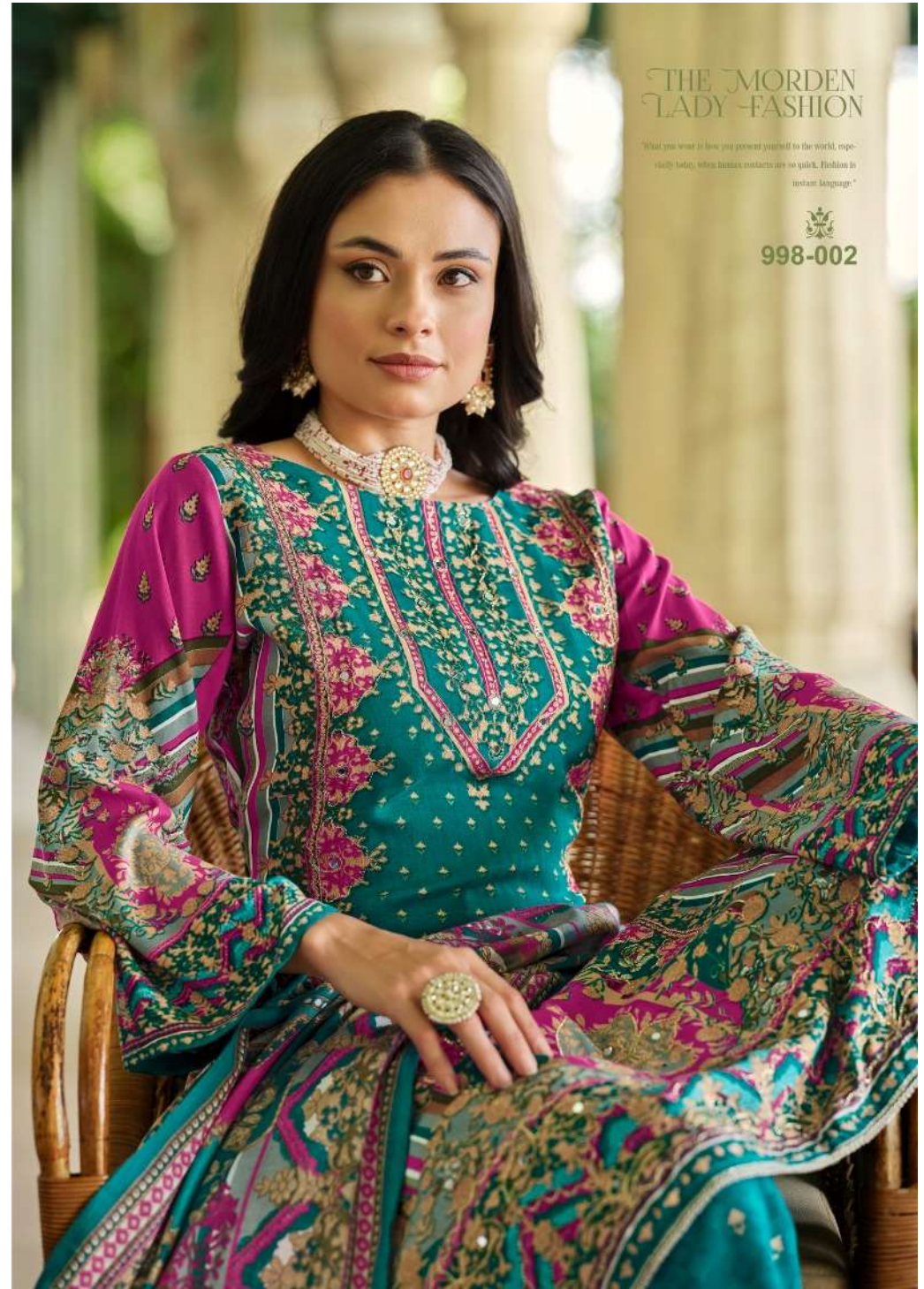
998-001



THE MORDEN LADY FASHION

"What you wear is how you present yourself to the world, especially today, when human contacts are so quick. Fashion is instant language."





THE MORDEN
LADY - FASHION

"What you wear is how you present yourself to the world, especially today, when human contacts are so quick. Fashion is instant language."



998-002





B

998-006



DIFFERENT STYLE

"What you wear is how you present yourself to the world, especially today, when human contacts are so quick. Fashion is instant language."



DIFFERENT
DIRCTION

"What you wear is how you present yourself to the world, especially today, when human contacts are so quick. Fashion is instant language."



998-005

THE MORDEN
LADY FASHION

"What you wear is how you present yourself to the world, especially today, when human contacts are so quick. Fashion is instant language."



998-008





DIFFERENT DIRCTION

"What you wear is how you present yourself to the world, especially today, when human contacts are so quick. Fashion is instant language."



998-007



SHAHEEN



998-001



998-002



998-003



998-004



998-005



998-006



998-007



998-008