



MOHMANTHAN™

Royal



MAHOTSAV®  
GROUP

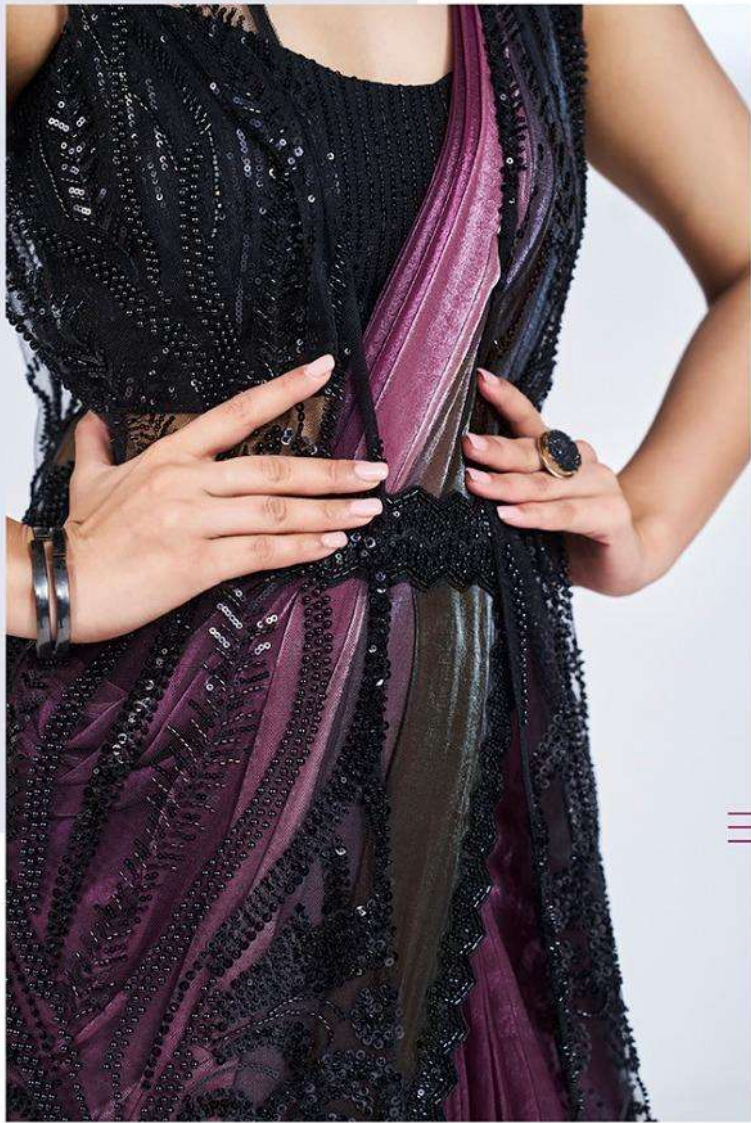


ELYSSIA



**24904**

FABRIC : TWO TONE SATIN SILK  
BLOUSE : HAND WORK READY TO WEAR



24903



**24906**

**FABRIC : TWO TONE SATIN SILK  
BLOUSE : HAND WORK READY TO WEAR**



24905

FABRIC : CREPE SATIN SILK  
BLOUSE : HAND WORK READY TO WEAR





24909



24908



24911

FABRIC : SHIMMER CHIFFON  
BLOUSE : HAND WORK READY TO WEAR



24910



24912



24913

FABRIC : TWO TONE SATIN SILK  
BLOUSE : HAND WORK READY TO WEAR



24912

FABRIC : CREPE SATIN SILK  
BLOUSE : HAND WORK READY TO WEAR



**24915**

**FABRIC : TWO TONE SATIN SILK  
BLOUSE : HAND WORK READY TO WEAR**



24914

FABRIC : CREPE SATIN SILK  
BLOUSE : HAND WORK READY TO WEAR



24903



24904



24905



24906



24907



24908



24909



24910



24911



24912



24913



24914



24915

MAHOTSAV  
GROUP



MOHMANTHAN™  
Royal

ELYSSIA

DESIGN NO	SAREE FABRIC	BLOUSE FABRIC	WORK	Poncho & Jacket	Belt	SAREE TYPE	CUSTZ.(SEMISTITCH/UN-STITCH)	BLOUSE SIZE
24903	Two tone satin silk	Tissue	Pure Handwork/ Khatli Work	Jacket Available	Available	Ready to wear	Stitched Blouse	up to 38 Inch with margin of 42 inch
24904	Two tone satin silk	Tissue	Pure Handwork/ Khatli Work	NA	Available	Ready to wear	Stitched Blouse	up to 38 Inch with margin of 42 inch
24905	Crepe satin silk	Tissue	Pure Handwork/ Khatli Work	NA	Available	Ready to wear	Stitched Blouse	up to 38 Inch with margin of 42 inch
24906	Two tone satin silk	Malai Satin	Pure Handwork/ Khatli Work	Poncho Available	Available	Ready to wear	Stitched Blouse	up to 38 Inch with margin of 42 inch
24907	Two tone satin silk	Heavy Mono Net	Pure Handwork/ Khatli Work	NA	Available	Ready to wear	Stitched Blouse	up to 38 Inch with margin of 42 inch
24908	Two tone satin silk	Tissue	Pure Handwork/ Khatli Work	NA	Available	Ready to wear	Stitched Blouse	up to 38 Inch with margin of 42 inch
24909	Crepe satin silk	Malai Satin	Pure Handwork/ Khatli Work	NA	Available	Ready to wear	Stitched Blouse	up to 38 Inch with margin of 42 inch
24910	Two tone satin silk	Tissue	Pure Handwork/ Khatli Work	NA	Available	Ready to wear	Stitched Blouse	up to 38 Inch with margin of 42 inch
24911	Shimmer Chiffon	Malai Satin	Pure Handwork/ Khatli Work	NA	NA	Ready to wear	Stitched Blouse	up to 38 Inch with margin of 42 inch
24912	Crepe satin silk	Malai Satin	Pure Handwork/ Khatli Work	NA	Available	Ready to wear	Stitched Blouse	up to 38 Inch with margin of 42 inch
24913	Two tone satin silk	Tissue	Pure Handwork/ Khatli Work	NA	Available	Ready to wear	Stitched Blouse	up to 38 Inch with margin of 42 inch
24914	Crepe satin silk	Raw Silk	Pure Handwork/ Khatli Work	NA	Available	Ready to wear	Stitched Blouse	up to 38 Inch with margin of 42 inch
24915	Two tone satin silk	Tissue	Pure Handwork/ Khatli Work	NA	Available	Ready to wear	Stitched Blouse	up to 38 Inch with margin of 42 inch