







TOP - VELVET WITH EMBROIDERY

DUPATTA- CHINON WITH EMBROIDERED

BOTTOM - RAYON PASCHMINA



D.No | 294 A



D.No | 294-B



D.No | 294-C



D.No | 294-D



Dinsoa
DRESS

Dinsoa
DRESS

DINNO 294 A

TOP - VELVET WITH EMBROIDERY
SHIRT - CLOTH WITH EMBROIDERY
KURTA - AEROSOL EMBROIDERY

MADE IN PAKISTAN
DINNO 294 A



Dinsaa
Suits

Dinsaa
Suits

D.NO.294 C

TOP - KURT WITH EMBROIDERY
DUPATTA - CASHMERE WITH EMBROIDERED
BOTTOM - BANJUN PLEASUREMENT

Dinsaa
Suits



Dinara
Dress
2023

D. NO. 294 B

TOP - VELVET WITH EMBROIDERY
DUPATTA - LINEN WITH EMBROIDURED
BOTTOM - KATOVA PALUCHKHA

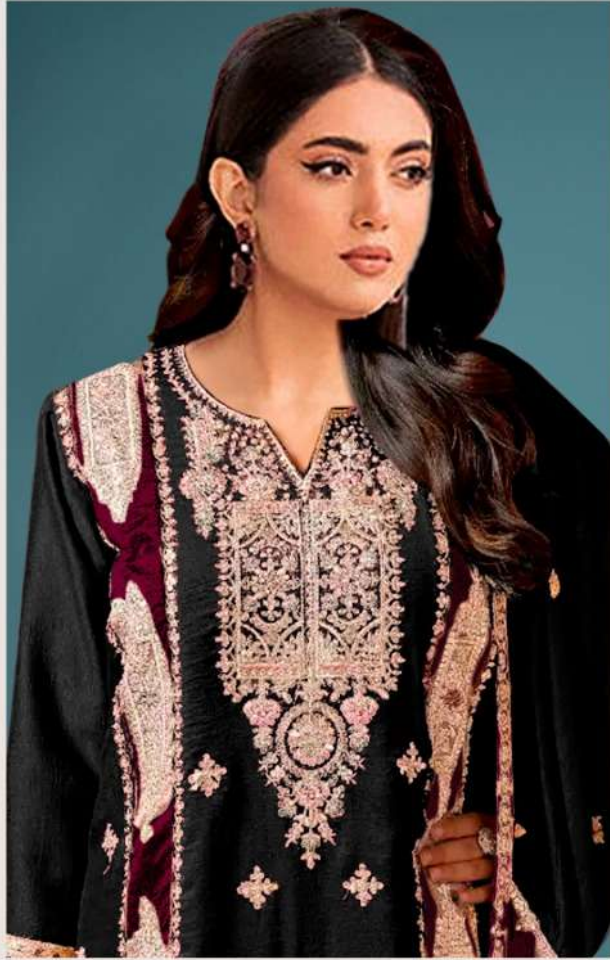
Dinara
Dress
2023



Dinsoo
Suits

DINSOO
TOP - VELVET WITH EMBROIDERY
DUPATTA - CHIFFON WITH EMBROIDERY
DUPUTTA - RAZON PACHINA

100% COTTON
100% COTTON



D.NO.294 D

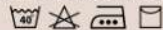


TOP - VELVET WITH EMBROIDERY

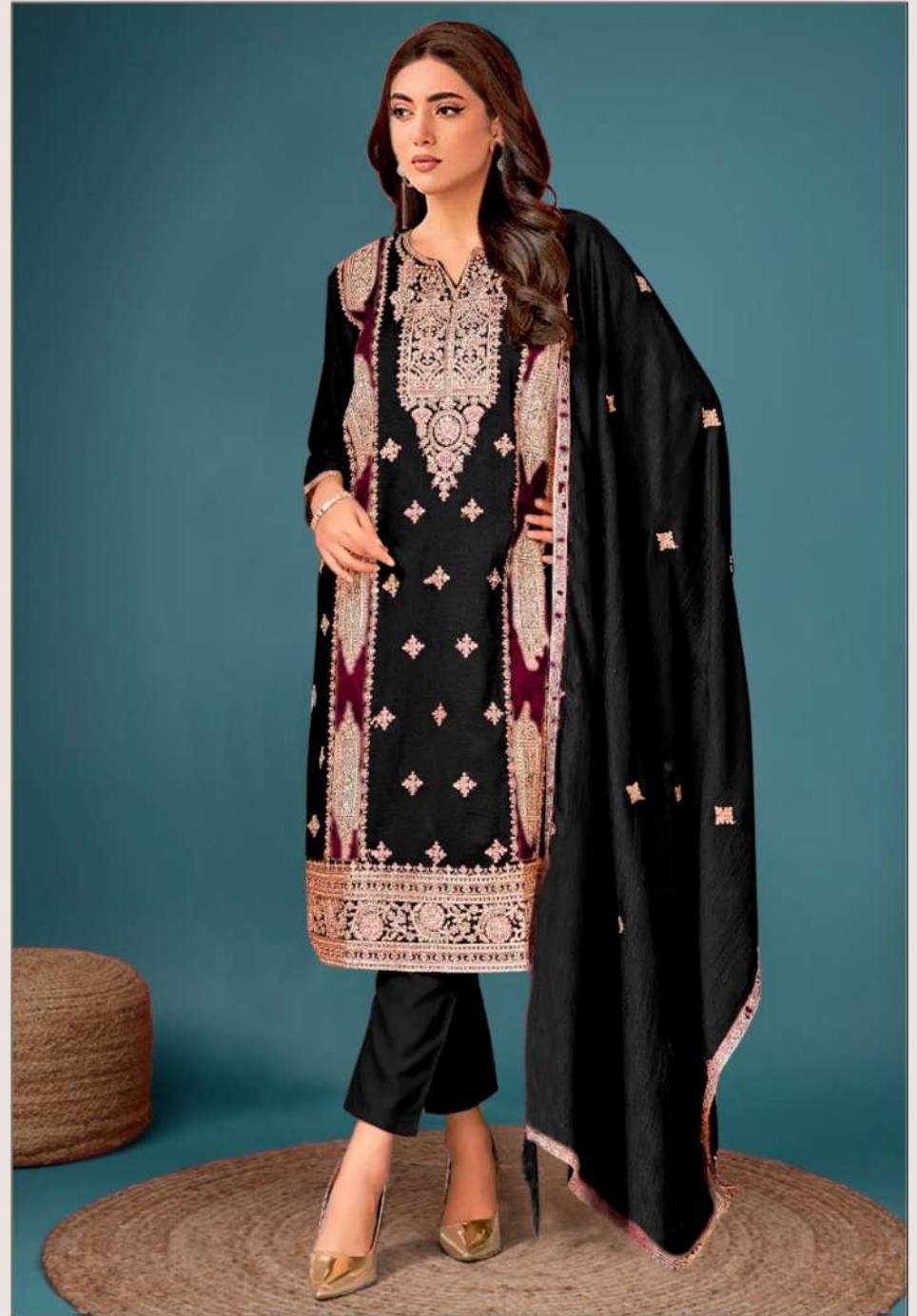
DUPATTA- CHINON WITH EMBROIDERED

BOTTOM - RAYON PASCHMINA

CARE INTRUCTIONS



- DRY CLEAN RECOMMENDED
- DO NOT OVEREXPOSE DAMP FABRIC TO STRONG SUNLIGHT
- DO NOT USE ANYTYPE OF BLEACH OR STAIN REMOVING CHEMICALS
- IRON AT MODERATE TEMPERATURE





D.NO.294 C

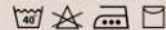


TOP - VELVET WITH EMBROIDERY

DUPATTA- CHINON WITH EMBROIDERED

BOTTOM - RAYON PASCHMINA

CARE INTRUCTIONS



- DRY CLEAN RECOMMENDED
- DO NOT OVEREXPOSE DAMP FABRIC TO STRONG SUNLIGHT
- DO NOT USE ANYTYPE OF BLEACH OR STAIN REMOVING CHEMICALS
- IRON AT MODERATE TEMPERATURE





D.NO.294 B

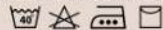


TOP - VELVET WITH EMBROIDERY

DUPATTA- CHINON WITH EMBROIDERED

BOTTOM - RAYON PASCHMINA

CARE INTRUCTIONS



- DRY CLEAN RECOMMENDED
- DO NOT OVEREXPOSE DAMP FABRIC TO STRONG SUNLIGHT
- DO NOT USE ANYTYPE OF BLEACH OR STAIN REMOVING CHEMICALS
- IRON AT MODERATE TEMPERATURE





D.NO.294 A

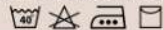


TOP - VELVET WITH EMBROIDERY

DUPATTA- CHINON WITH EMBROIDERED

BOTTOM - RAYON PASCHMINA

CARE INTRUCTIONS



- DRY CLEAN RECOMMENDED
- DO NOT OVEREXPOSE DAMP FABRIC TO STRONG SUNLIGHT
- DO NOT USE ANYTYPE OF BLEACH OR STAIN REMOVING CHEMICALS
- IRON AT MODERATE TEMPERATURE

