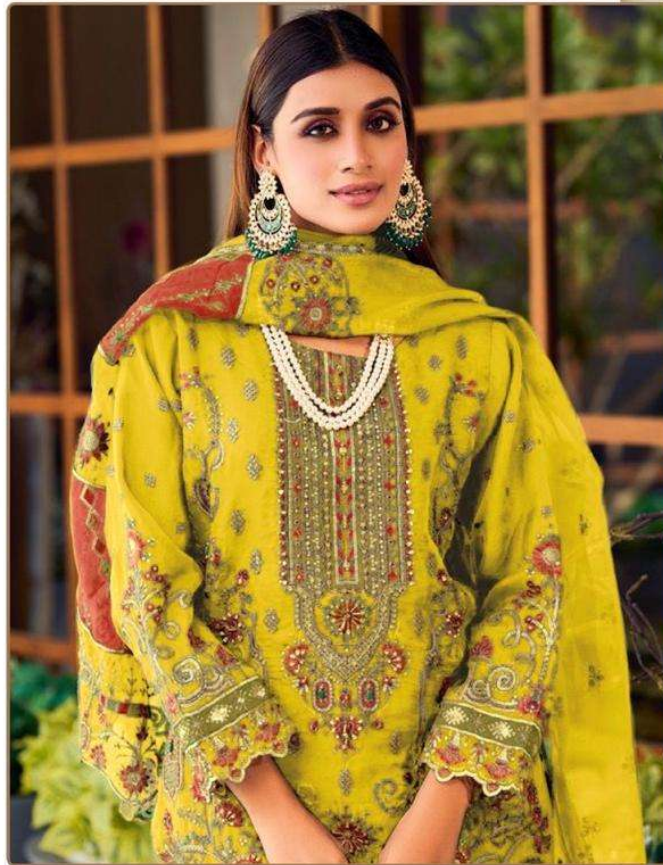




**READYMAD**  
**#R-1128-D**



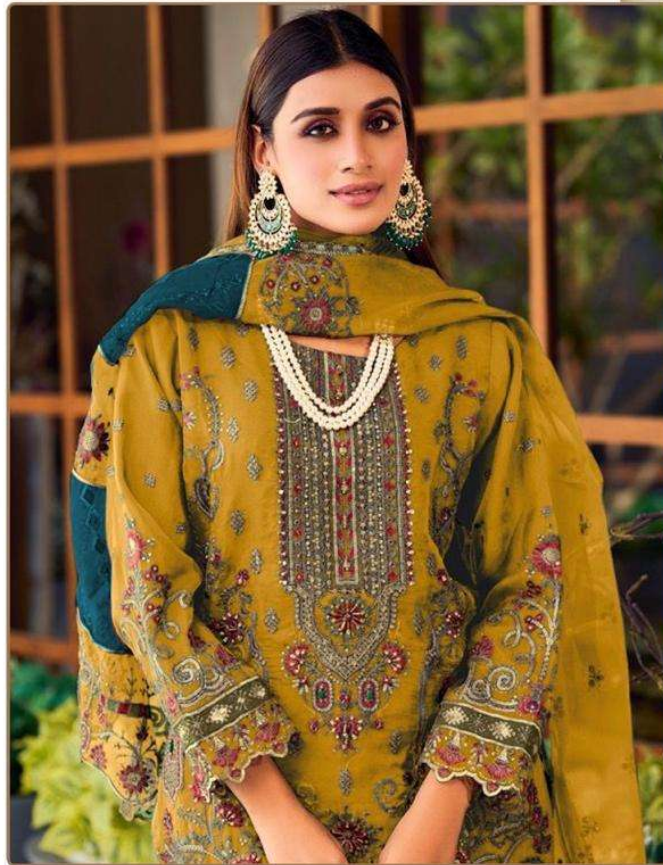
**TOP** - ORGENZA EMBROIDERY  
**BOTTOM** - SILK STICH  
**DUPATTA** - ORGENZA EMBROIDERY



Ⓟ DRY CLEAN ONLY.  
⚠ DO NOT USE ANY BLEACH OR STAIN REMOVING CHEMICAL.  
🧊 IRON THE FABRIC AT MODERATE TEMPERATURE.



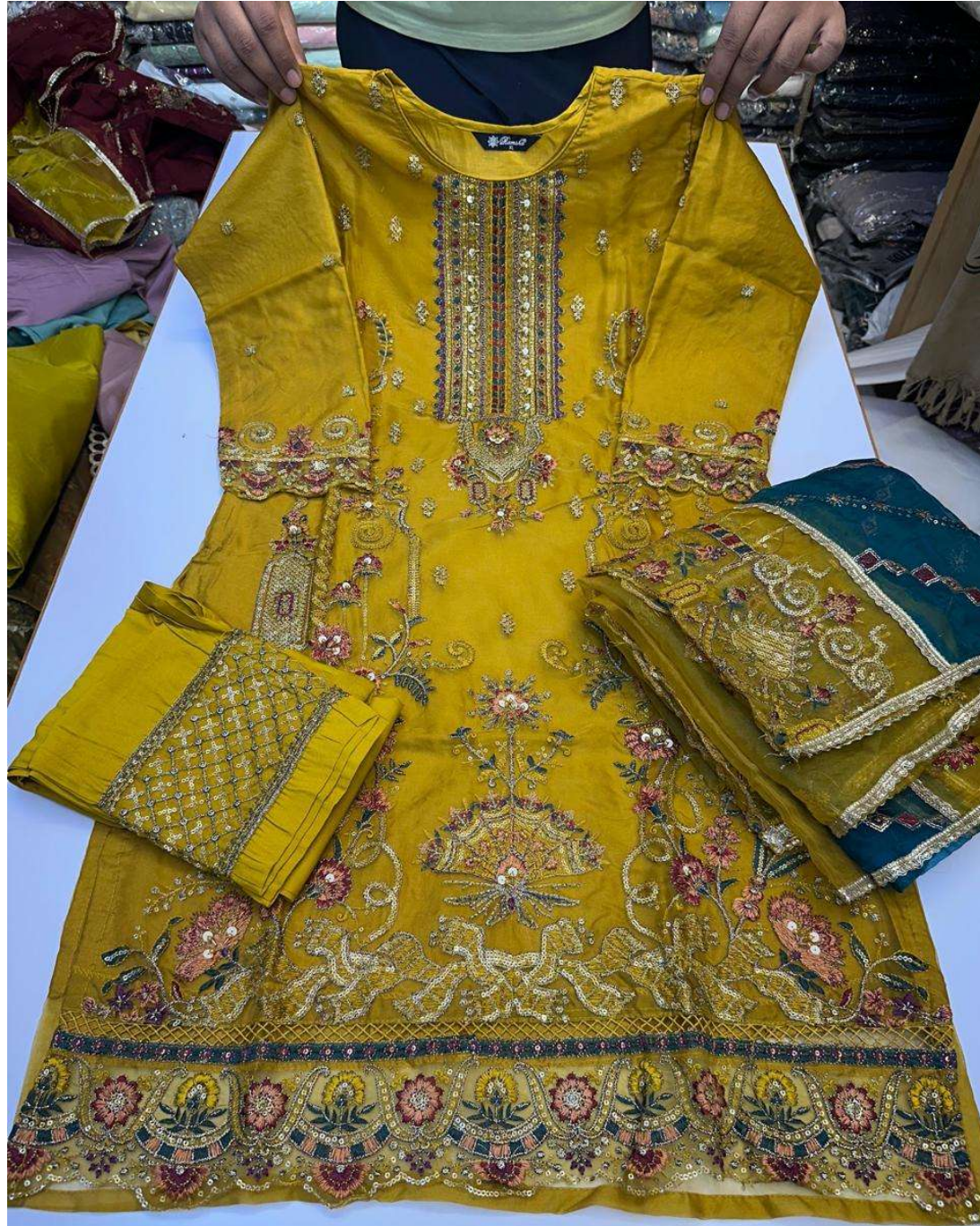
**READYMAD**  
**#R-1128-A**



**TOP** - ORGENZA EMBROIDERY  
**BOTTOM** - SILK STICH  
**DUPATTA** - ORGENZA EMBROIDERY

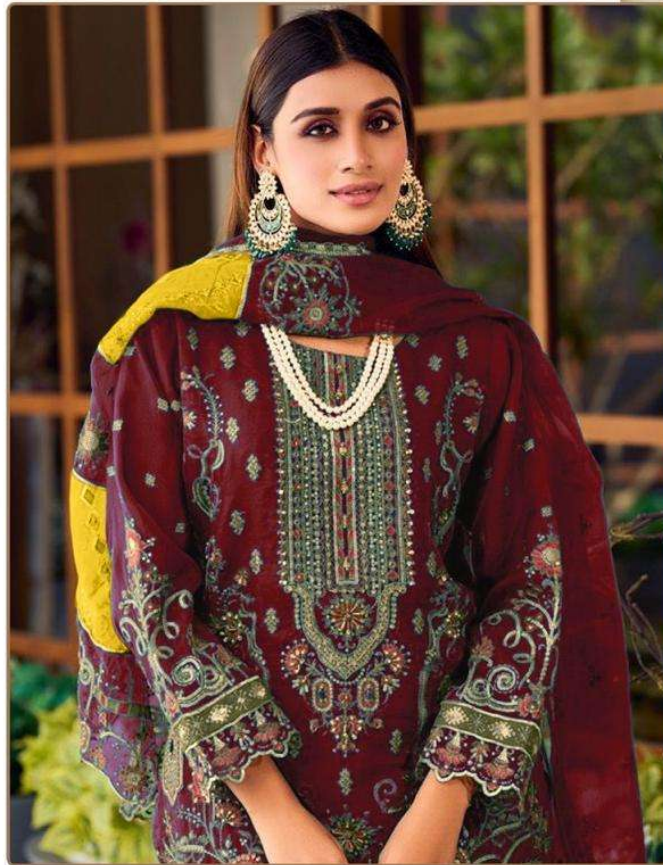


Ⓟ DRY CLEAN ONLY.  
⚠ DO NOT USE ANY BLEACH OR STAIN REMOVING CHEMICAL.  
🧊 IRON THE FABRIC AT MODERATE TEMPERATURE.





**READYMAD**  
**#R-1128-C**



**TOP** - ORGENZA EMBROIDERY  
**BOTTOM** - SILK STICH  
**DUPATTA** - ORGENZA EMBROIDERY

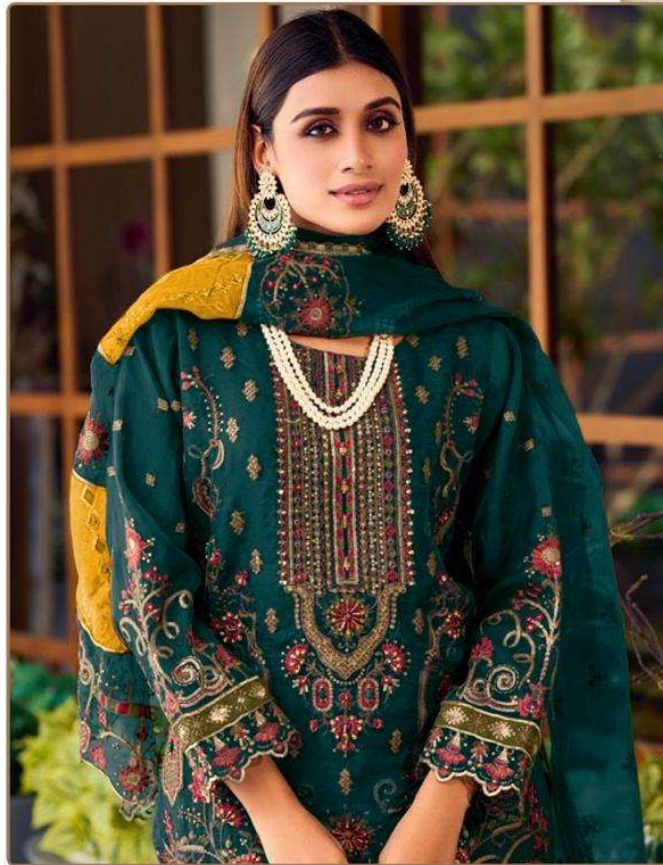


Ⓟ DRY CLEAN ONLY.  
ⓧ DO NOT USE ANY BLEACH OR STAIN REMOVING CHEMICAL.  
🧊 IRON THE FABRIC AT MODERATE TEMPERATURE.





**READYMAD**  
**#R-1128-B**



**TOP** - ORGENZA EMBROIDERY  
**BOTTOM** - SILK STICH  
**DUPATTA** - ORGENZA EMBROIDERY

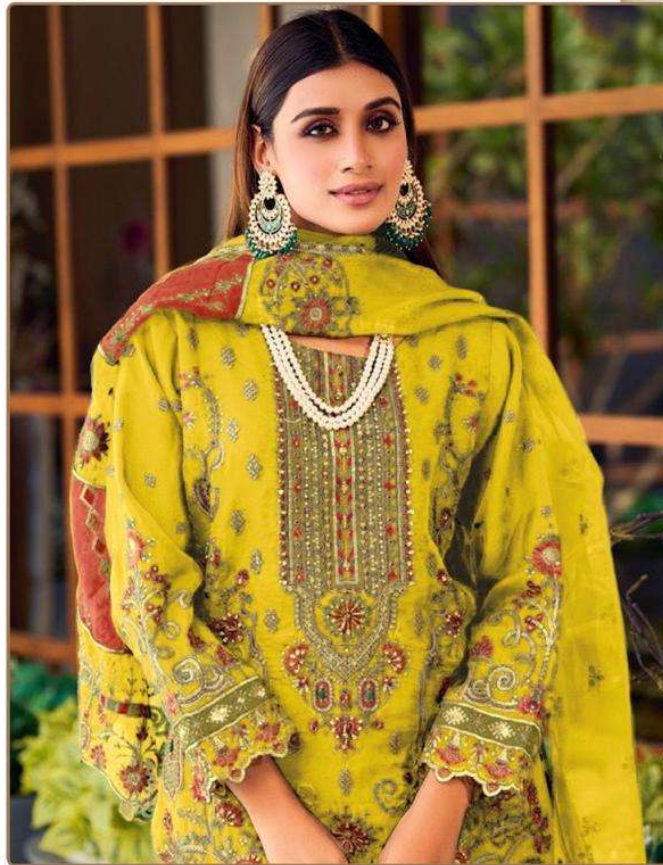


Ⓟ DRY CLEAN ONLY.  
ⓧ DO NOT USE ANY BLEACH OR STAIN REMOVING CHEMICAL.  
🧊 IRON THE FABRIC AT MODERATE TEMPERATURE.





**READYMAD**  
**#R-1128-D**



**TOP- ORGENZA EMBROIDERY**  
**BOTTOM - SILK STICH**  
**DUPATTA - ORGENZA EMBROIDERY**



Ⓟ DRY CLEAN ONLY.  
⚠ DO NOT USE ANY BLEACH OR STAIN REMOVING CHEMICAL.  
🧊 IRON THE FABRIC AT MODERATE TEMPERATURE.





Ramsha

READYMAD  
COLLECTION



#R-1128-A



#R-1128-B



#R-1128-C



#R-1128-D