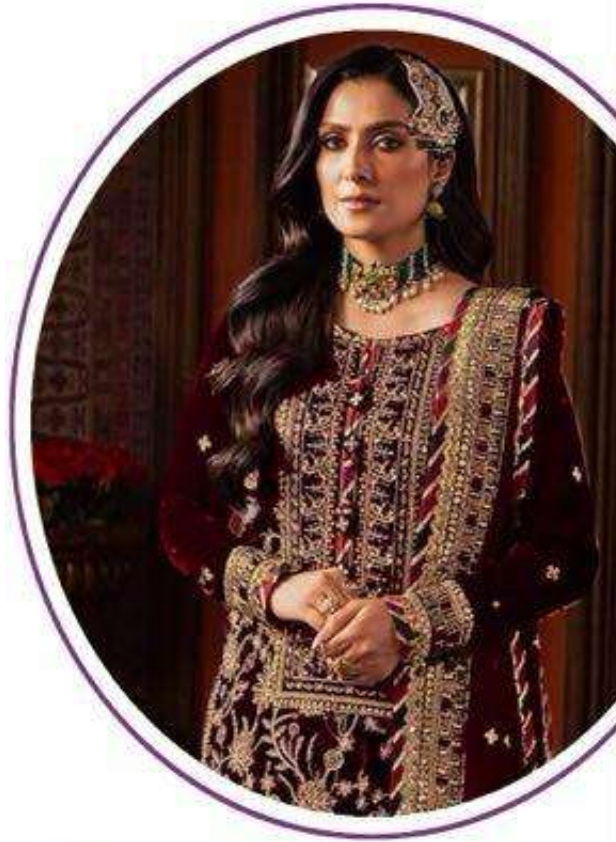


Ramsha®

READYMAD
#R-1210-B



TOP - VELVET EMBROIDERY
BOTTOM - REYON STICH
DUPATTA - NET EMBROIDERY

☉ DRY CLEAN ONLY.
✘ DO NOT USE ANY BLEACH OR STAIN REMOVING CHEMICAL.
☐ IRON THE FABRIC AT MODERATE TEMPERATURE.



Ramsha®

READYMAD
#R-1210-A



TOP - VELVET EMBROIDERY
BOTTOM - REYON STICH
DUPATTA - NET EMBROIDERY

☉ DRY CLEAN ONLY.
✘ DO NOT USE ANY BLEACH OR STAIN REMOVING CHEMICAL.
☐ IRON THE FABRIC AT MODERATE TEMPERATURE.



Ramsha®

READYMAD
#R-1210-C



TOP - VELVET EMBROIDERY
BOTTOM - REYON STICH
DUPATTA - NET EMBROIDERY

☉ DRY CLEAN ONLY.
✘ DO NOT USE ANY BLEACH OR STAIN REMOVING CHEMICAL.
☐ IRON THE FABRIC AT MODERATE TEMPERATURE.



Ramsha®

READYMAD
#R-1210-D



TOP - VELVET EMBROIDERY
BOTTOM - REYON STICH
DUPATTA - NET EMBROIDERY

☉ DRY CLEAN ONLY.
✘ DO NOT USE ANY BLEACH OR STAIN REMOVING CHEMICAL.
☐ IRON THE FABRIC AT MODERATE TEMPERATURE.



Ramsha®

READYMAD
#R-1210-B



TOP - VELVET EMBROIDERY
BOTTOM - REYON STICH
DUPATTA - NET EMBROIDERY

☉ DRY CLEAN ONLY.
✘ DO NOT USE ANY BLEACH OR STAIN REMOVING CHEMICAL.
☐ IRON THE FABRIC AT MODERATE TEMPERATURE.



Ramsha

READYMAD
COLLECTION



#R-1210-A



#R-1210-B



#R-1210-C



#R-1210-D