



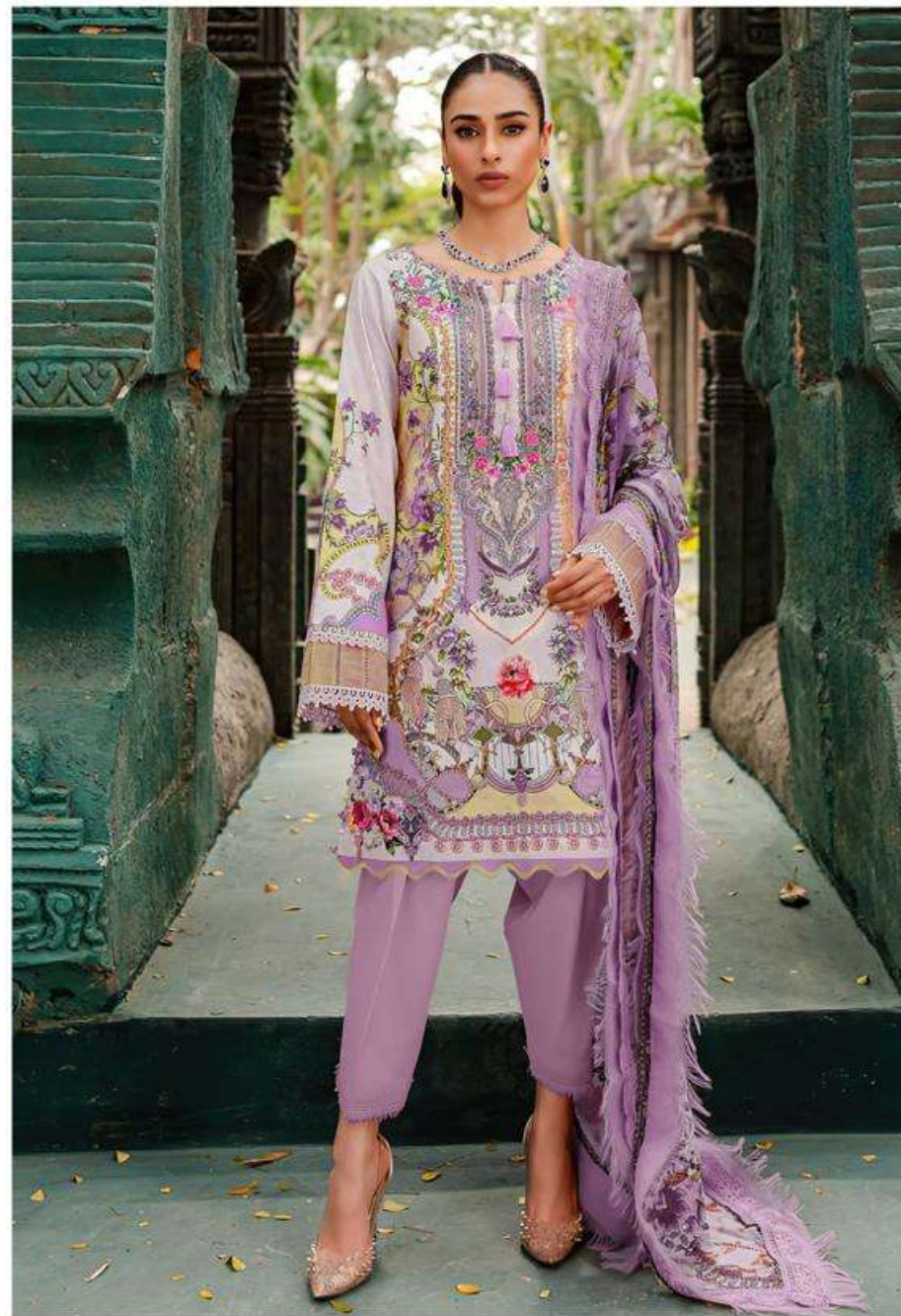
Alzohaib

Queen Court
Vol-1

Alzohaib



AZ.1023



Alzohaib



Alzohaib

AZ-1023
TOP
PURE COTTON PRINT WITH
EXCLUSIVE EMBROIDERY
BOTTOM
SEMI LAIN
DUPATTA
COTTON CHIFFON

USE INSTRUCTIONS

Alzohaib



AZ.1024



Alzohaib



Alzohaib

AZ-1024

TOP
PURE COTTON PRINT WITH
EXCLUSIVE EMBROIDERY
DETAILS

BOTTOM
SEMI LAWN
DUPATTA
COTTON/CHIFFON

CARE INSTRUCTIONS:
1. Wash in cold water.
2. Do not use bleach.
3. Iron on low heat.
4. Do not dry clean.

Alzohaib



AZ.1025



Alzohaib



Alzohaib



Alzohaib

AZ-1035
TOP
PURE COTTON PRINT WITH
EXCLUSIVE EMBROIDERY
BOTTOM
SEMI LAWN
DUPATTA
COTTON/CHIFFON

SIZE MEASUREMENTS
Chest: 36-38
Length: 40-42
Sleeve: 20-22

Alzohaib



AZ.1026



Alzohaib

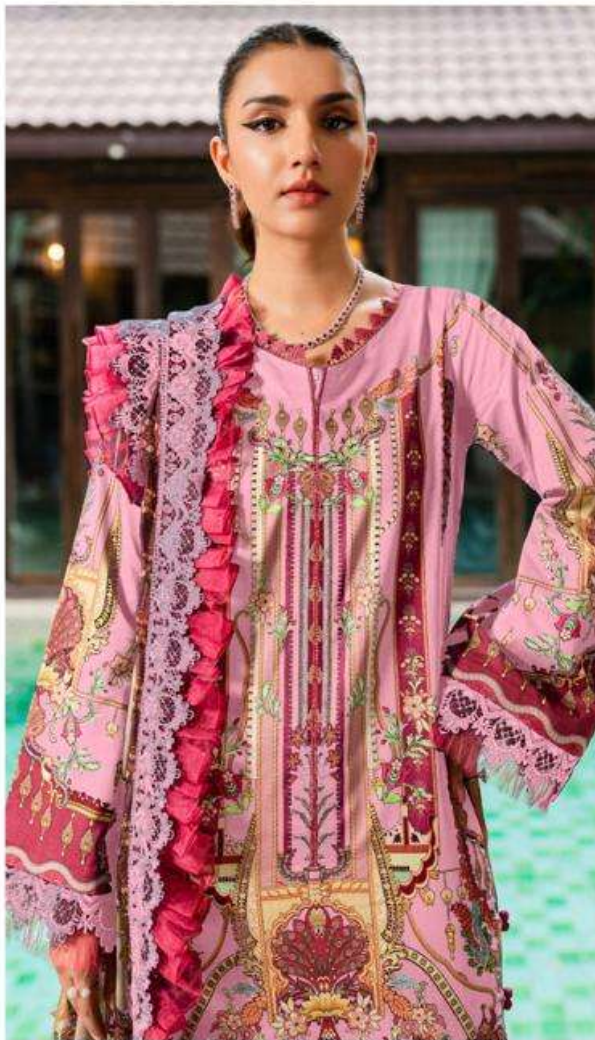


Alzohaib

AZ-1026
TOP
PURE COTTON PRINT WITH
EXCLUSIVE EMBROIDERY
BOTTOM
SEMI LAIN
DUPATTA
COTTON/CHIFFON

SIZE INFORMATION

Alzohaib



AZ.1027



Alzohaib



Alzohaib

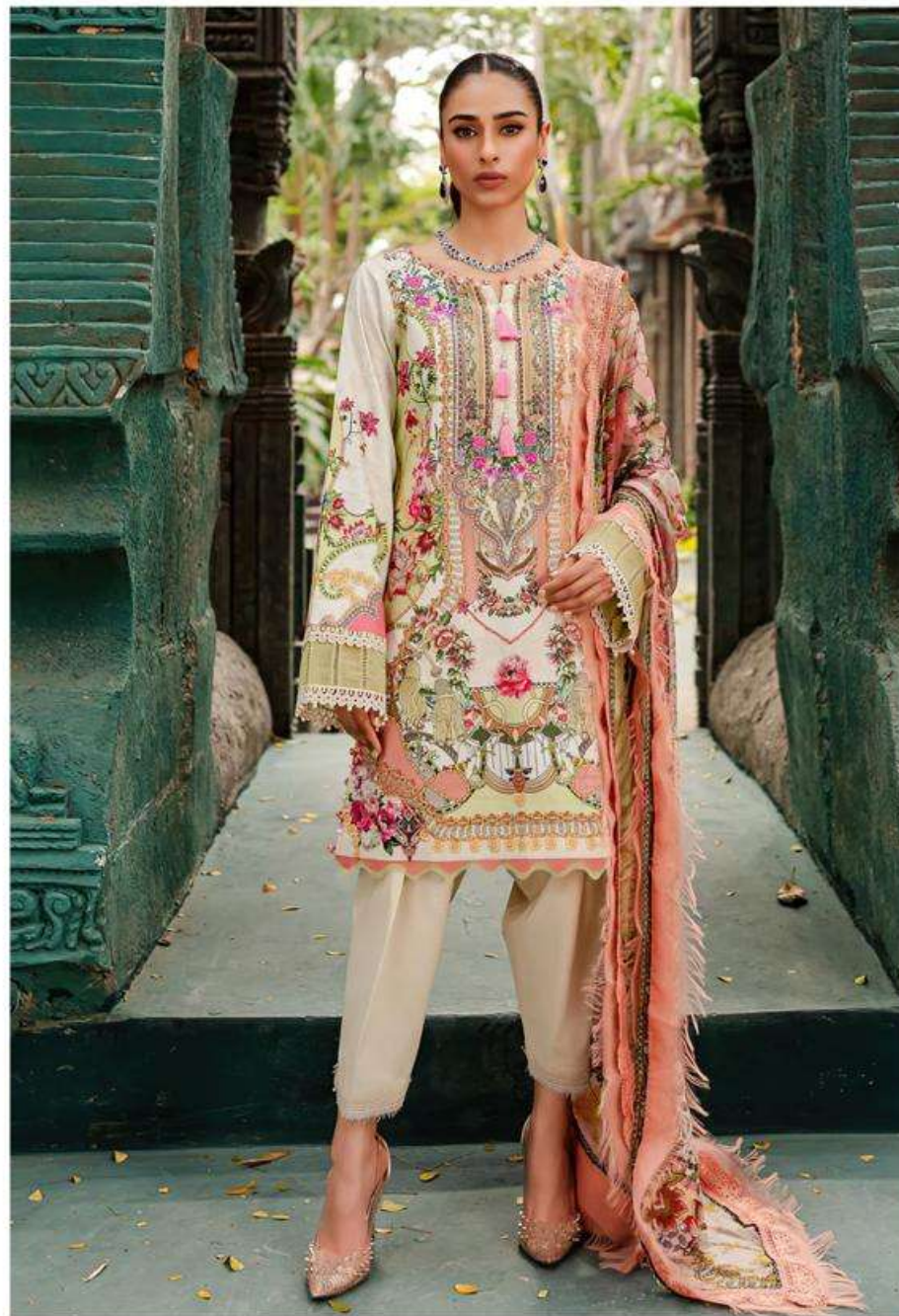
AZ-1027
TOP
PURE COTTON PRINT WITH
EXCLUSIVE EMBROIDERY
BOTTOM
SEMI LAKHAI
DUPATTA
COTTON+CHIFFON

USE REFERENCE

Alzohaib



AZ.1028





Alzohaib

AZ-1028
TOP
PURE COTTON PRINT WITH
EXCLUSIVE EMBROIDERY
PATCHES

BOTTOM
SEMI LAWN

DUPATTA
COTTON/CHIFFON

CARE INSTRUCTIONS:
WASH IN COLD WATER
DO NOT BLEACH
DO NOT IRON

Alzohaib

Alzohaib



AZ-1023



AZ-1024



AZ-1025



AZ-1026



AZ-1027



AZ-1028