

A woman with dark hair pulled back, wearing a purple long-sleeved kurta with intricate floral embroidery in pink and white. She is standing next to a large, weathered stone sculpture of an eagle. The background is a textured stone wall with more carvings.

**zaveri**<sup>TM</sup>  
READYMADE COLLECTION

FASHION IS ABOUT DREAMING AND  
MAKING OTHER PEOPLE DREAM

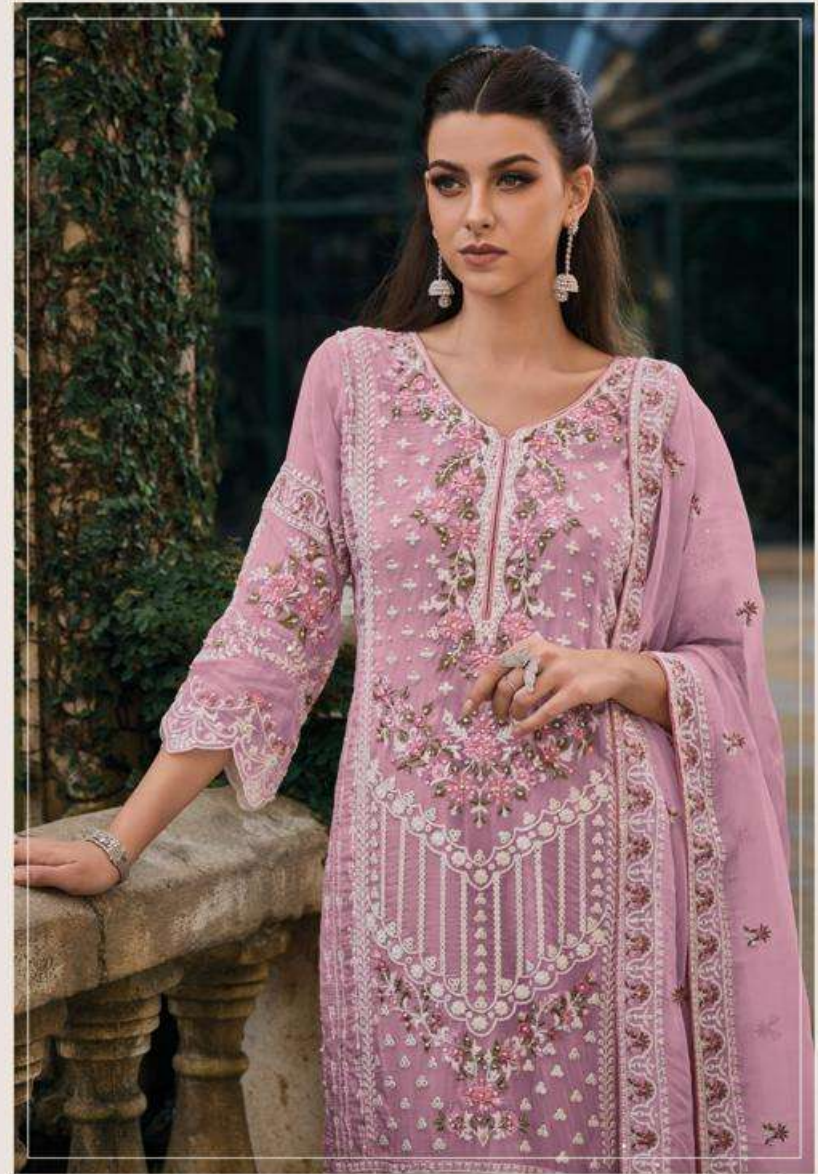


**zaveri**<sup>TM</sup>  
READYMADE COLLECTION

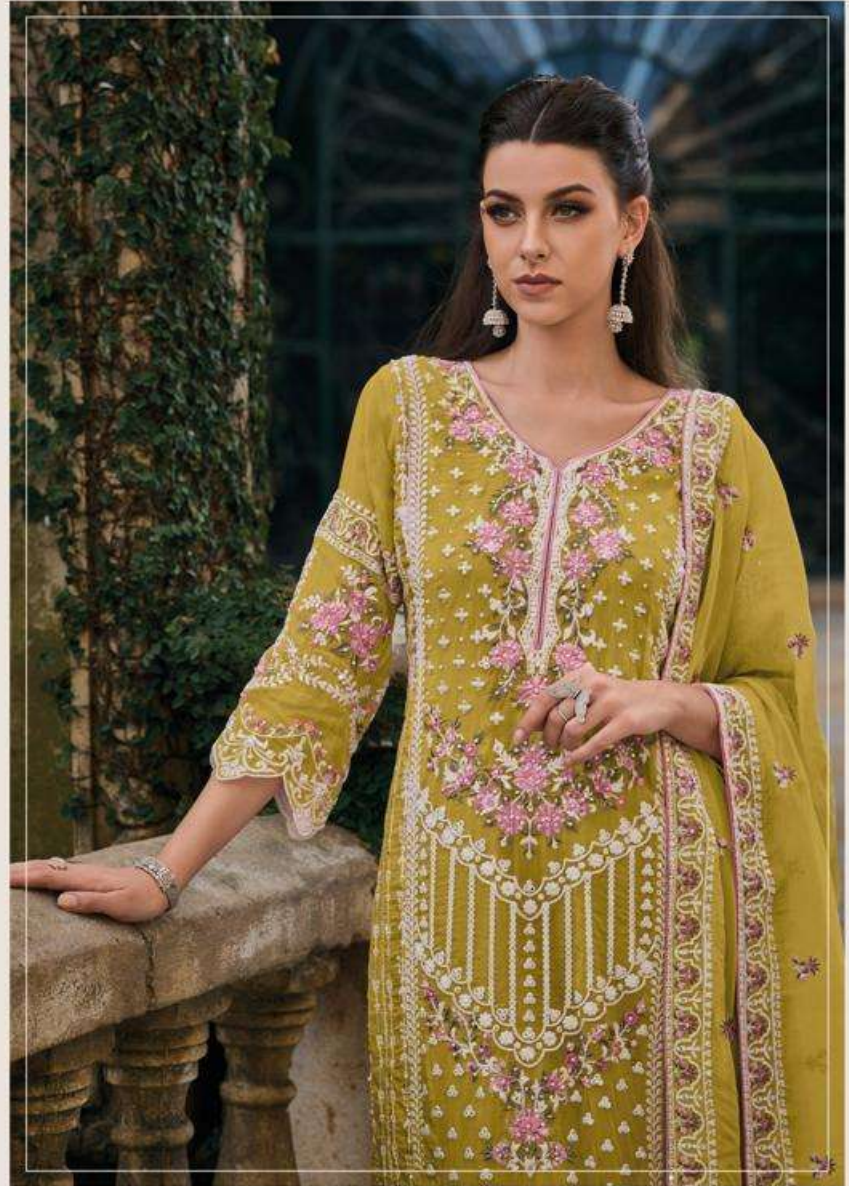


1219-C ●●●





1219-D ●●●



1219-A ●●●

**zaverri**<sup>TM</sup>  
READYMADE COLLECTION



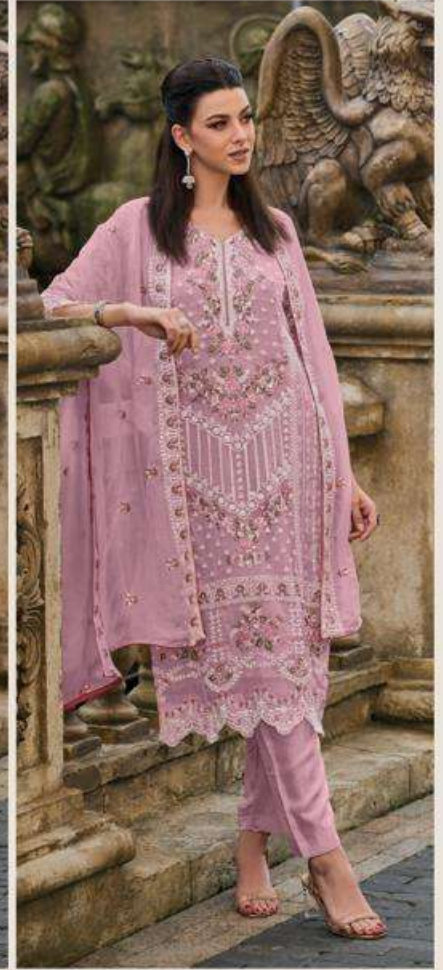
1219-A ●●●



1219-B ●●●



1219-C ●●●



1219-D

**zaveri**<sup>TM</sup>  
READYMADE COLLECTION

**FEMINA**  
COLOR EDITION - 2