

JOHRA TEX



JT D.NO.139 A

**TOP - ORGENZA WITH HEAVY EMBROIDERY
(WITE PERALS MOTI WORK)**

BOTTOM - DULL SANTON

DUPATTA - ORGENZA WITH HEAVY EMBROIDERY



JOHRA TEX



JT D.NO.139 B

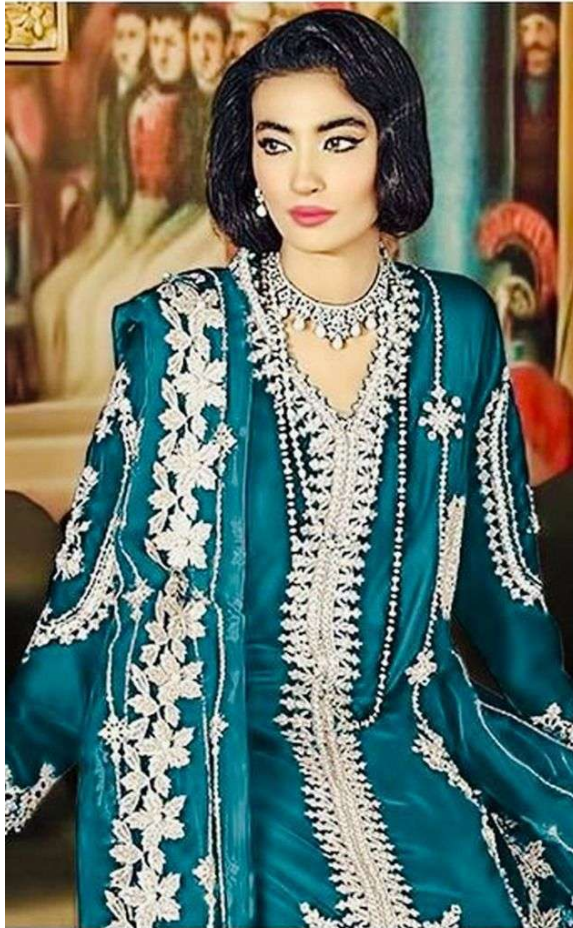
**TOP - ORGENZA WITH HEAVY EMBROIDERY
(WITE PERALS MOTI WORK)**

BOTTOM - DULL SANTON

DUPATTA - ORGENZA WITH HEAVY EMBROIDERY



JOHRA TEX



JT D.NO.139 A

**TOP - ORGENZA WITH HEAVY EMBROIDERY
(WITE PERALS MOTI WORK)**

BOTTOM - DULL SANTON

DUPATTA - ORGENZA WITH HEAVY EMBROIDERY



JOHRA TEX



JT D.NO.139 D

**TOP - ORGENZA WITH HEAVY EMBROIDERY
(WITE PERALS MOTI WORK)**

BOTTOM - DULL SANTON

DUPATTA - ORGENZA WITH HEAVY EMBROIDERY



JOHRA TEX



JT D.NO.139 C

**TOP - ORGENZA WITH HEAVY EMBROIDERY
(WITE PERALS MOTI WORK)**

BOTTOM - DULL SANTON

DUPATTA - ORGENZA WITH HEAVY EMBROIDERY



JOHRA TEX

TOP - ORGENZA WITH HEAVY EMBROIDERY
(WITE PERALS MOTI WORK)
BOTTOM - DULL SANTON
DUPATTA - ORGENZA WITH HEAVY EMBROIDERY



JT D.NO.139 A



JT D.NO.139 B



JT D.NO.139 C



JT D.NO.139 D