

**TOP- HEAVY FOX GEROGETTE EMBROIDERED
WITH DAIMOND WORK**

M-243 A

INNER- SANTOON

BOTTOM- SANTOON

DUPATTA/NET- HEAVY EMBROIDERY WORK

☑ DRY CLEAN ONLY.
☒ DO NOT USE ANY BLEACH OR STAIN REMOVING CHEMICAL.
☑ IRON THE FABRIC AT MODERATE TEMPERATURE.



**TOP- HEAVY FOX GEROGETTE EMBROIDERED
WITH DAIMOND WORK**

M-243 A

INNER- SANTOON

BOTTOM- SANTOON

DUPATTA/NET- HEAVY EMBROIDERY WORK

☑ DRY CLEAN ONLY.
☒ DO NOT USE ANY BLEACH OR STAIN REMOVING CHEMICAL.
☑ IRON THE FABRIC AT MODERATE TEMPERATURE.







M
MUSIQ

TOP- HEAVY FOX GEOMETRIC EMBROIDERED
WITH LAINARD WORK

INNER-SANTON

BOTTOM-SANTON

DUPLICATE-HEAVY EMBROIDERY WORK

DO NOT CLEAN DRY

DO NOT IRON

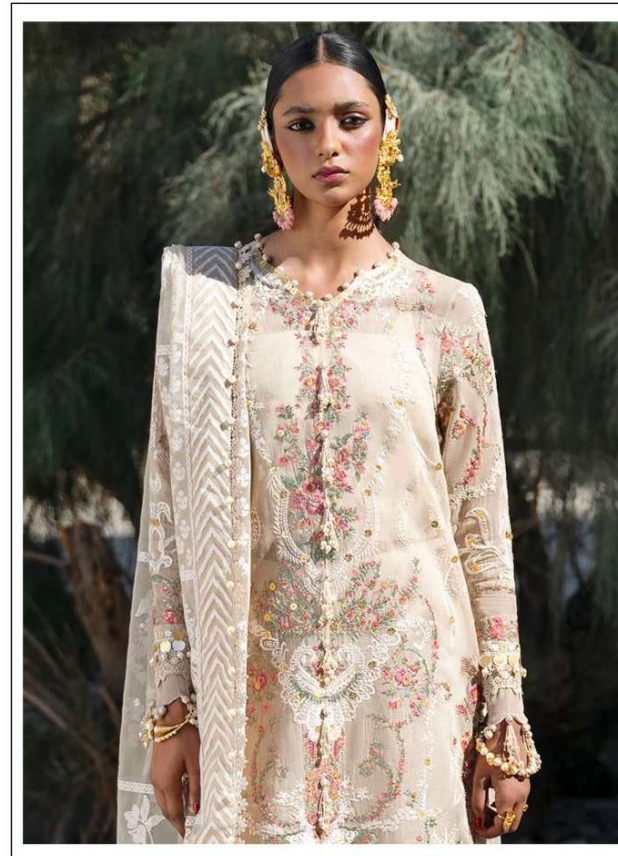
DO NOT BLEACH

DO NOT USE FABRIC SOFTENER

DO NOT USE CHEMICAL

DO NOT WASH

M-241A



TOP- DULL ORGANZA WITH HEAVY EMBROIDERY

M-243 B

BOTTOM/INNER- SANTOON

DUPATTA/NET- ORGANZA WITH WORK WITH 4 SIDE CUT WORK LACE

☑ DRY CLEAN ONLY.
☒ DO NOT USE ANY BLEACH OR STAIN REMOVING CHEMICAL.
☑ IRON THE FABRIC AT MODERATE TEMPERATURE.





M
MUSHQ

TOP: HEAVY FOX GORGETTE EMBROIDERED WITH DIAMOND WORK
INNER: SANTON
BOTTOM: SANTON (M-243 B)
DI PATTA: HEAVY EMBROIDERY WORK
DO NOT BLEACH
DO NOT BLEACH OR USE ANY BLEACHING CHEMICAL FROM THE FRONT AT MODERATE TEMPERATURE.



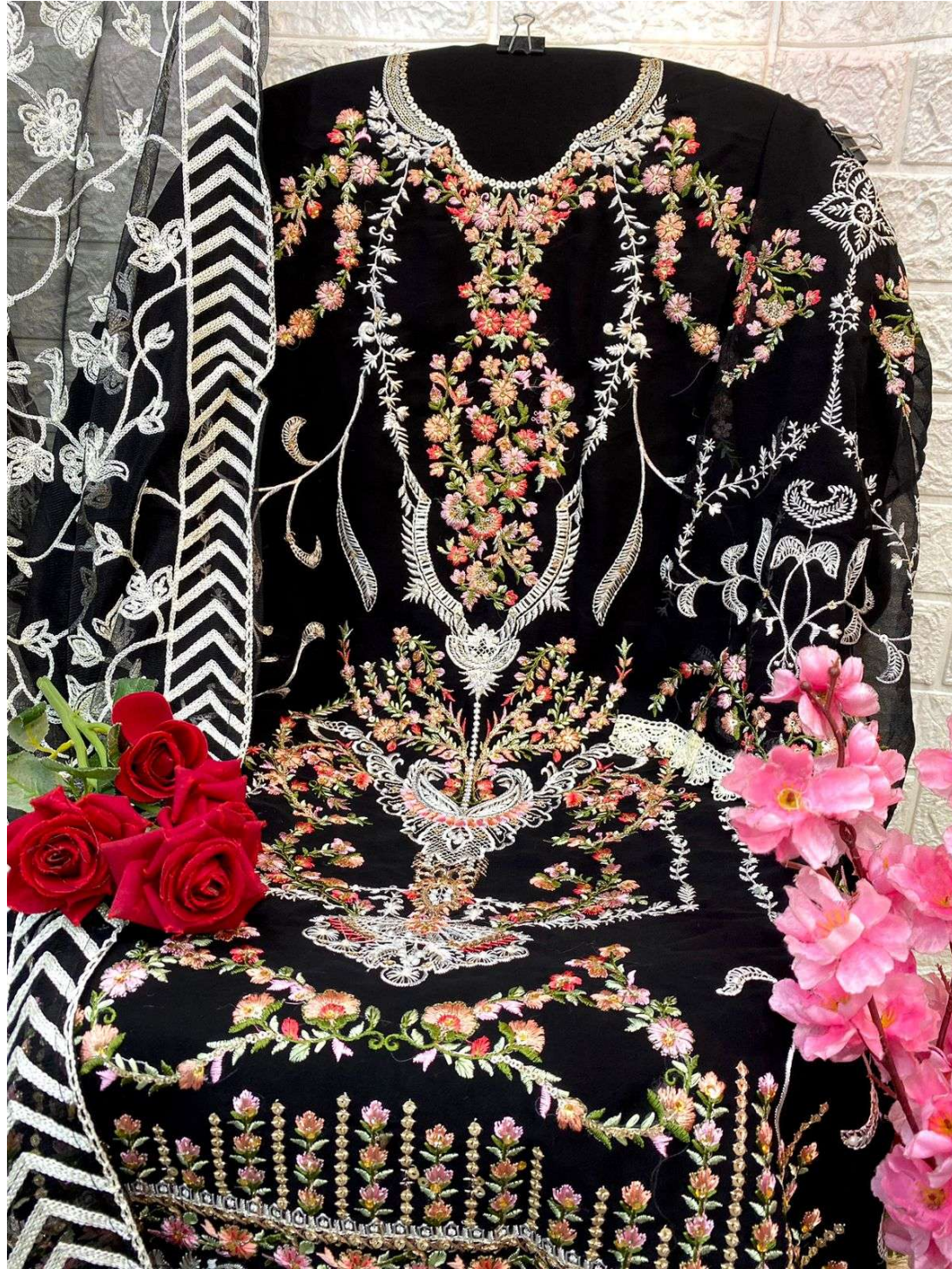
TOP- DULL ORGANZA WITH HEAVY EMBROIDERY

M-243 C

BOTTOM/INNER- SANTOON

DUPATTA/NET- ORGANZA WITH WORK WITH 4 SIDE CUT WORK LACE

☑ DRY CLEAN ONLY.
☒ DO NOT USE ANY BLEACH OR STAIN REMOVING CHEMICAL.
☑ IRON THE FABRIC AT MODERATE TEMPERATURE.







M
MUSTIC

TOP: HEAVY FOX GLOUCETTE EMBROIDERED WITH DIAMOND WORK
INSER: SANTOON
BOTTOM: SANTOON
DUPYANET: HEAVY EMBROIDERY W
DO NOT CLEAN ONLY
DO NOT
DO NOT
BLEACH OR STAIN REMOVING CHEMICAL
MODERATE TEMPERATURE.

M-243 C

**TOP- HEAVY FOX GEROGETTE EMBROIDERED
WITH DAIMOND WORK**

INNER- SANTOON

BOTTOM- SANTOON

DUPATTA/NET- HEAVY EMBROIDERY WORK



D.No-243 A



D.No-243 B



D.No-243 C