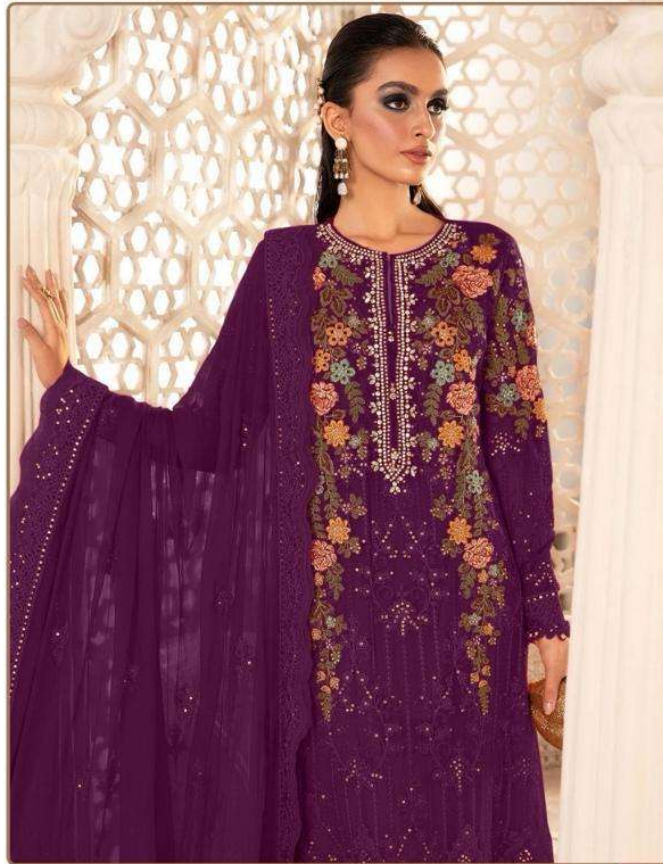




**READYMAD**  
**#R-1113-B**

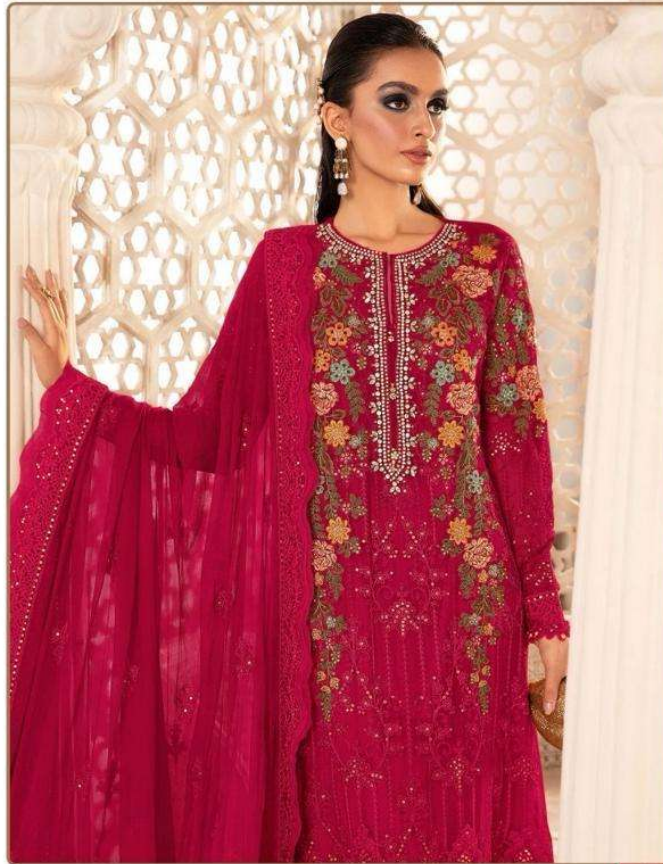


**TOP- ORGENZA EMBROIDERY**  
**BOTTOM- SILK STICHED**  
**DUPATTA - NET EMBROIDERY**

Ⓟ DRY CLEAN ONLY.  
⚠ DO NOT USE ANY BLEACH OR STAIN REMOVING CHEMICAL.  
🧊 IRON THE FABRIC AT MODERATE TEMPERATURE.



**READYMAD**  
**#R-1113-A**



TOP- ORGENZA EMBROIDERY  
BOTTOM- SILK STICHED  
DUPATTA - NET EMBROIDERY

Ⓟ DRY CLEAN ONLY.  
⚠ DO NOT USE ANY BLEACH OR STAIN REMOVING CHEMICAL.  
🧊 IRON THE FABRIC AT MODERATE TEMPERATURE.



**READYMAD**  
**#R-1113-B**

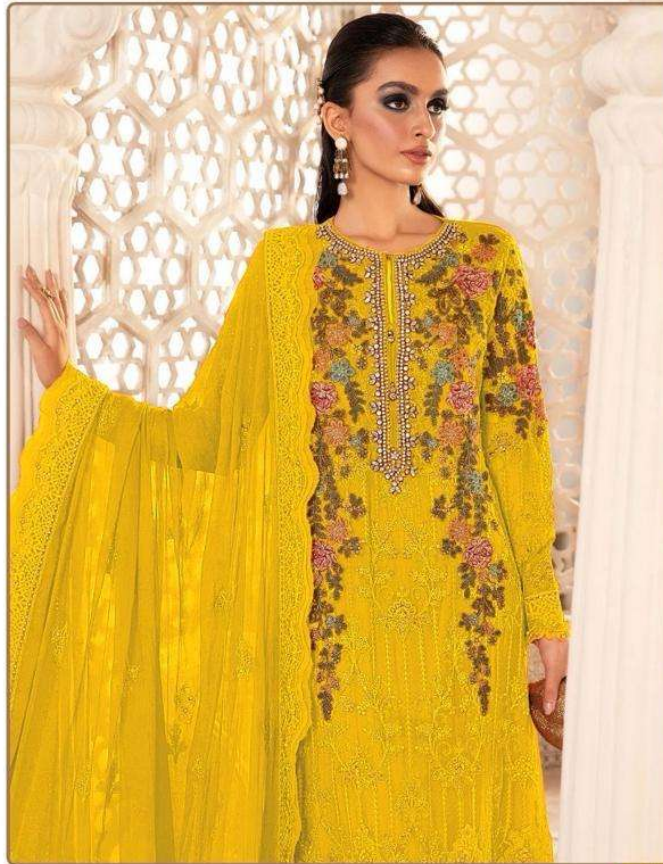


**TOP- ORGENZA EMBROIDERY**  
**BOTTOM- SILK STICHED**  
**DUPATTA - NET EMBROIDERY**

Ⓟ DRY CLEAN ONLY.  
⚠ DO NOT USE ANY BLEACH OR STAIN REMOVING CHEMICAL.  
🧊 IRON THE FABRIC AT MODERATE TEMPERATURE.



**READYMAD**  
**#R-1113-C**

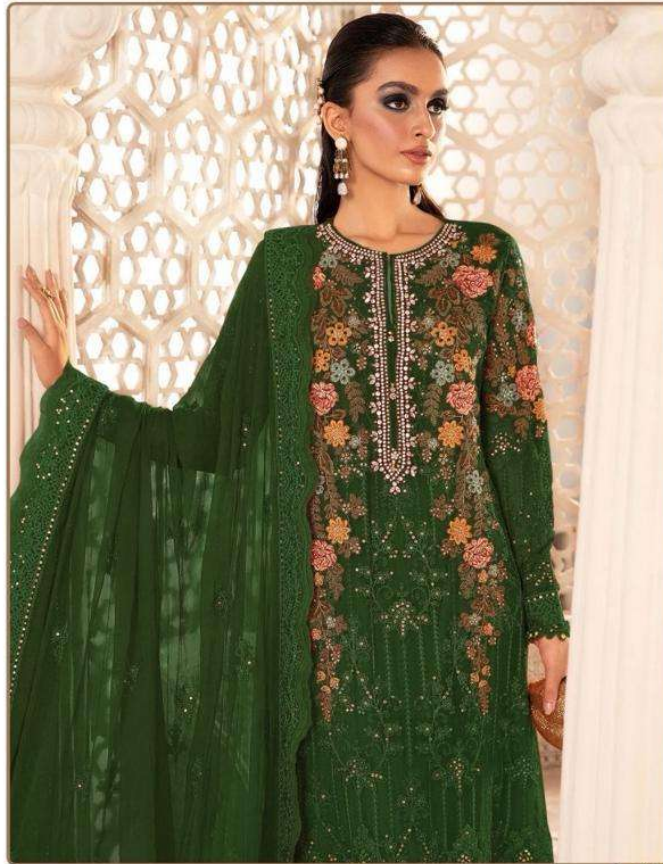


**TOP- ORGENZA EMBROIDERY**  
**BOTTOM- SILK STICHED**  
**DUPATTA - NET EMBROIDERY**

Ⓟ DRY CLEAN ONLY.  
⚠ DO NOT USE ANY BLEACH OR STAIN REMOVING CHEMICAL.  
🧊 IRON THE FABRIC AT MODERATE TEMPERATURE.

  
Ramsha®

READYMAD  
#R-1113-D



TOP- ORGENZA EMBROIDERY  
BOTTOM- SILK STICHED  
DUPATTA - NET EMBROIDERY

Ⓟ DRY CLEAN ONLY.  
ⓧ DO NOT USE ANY BLEACH OR STAIN REMOVING CHEMICAL.  
🧊 IRON THE FABRIC AT MODERATE TEMPERATURE.



**READYMAD**  
**#R-1113-CREAM**



**TOP- ORGENZA EMBROIDERY**  
**BOTTOM- SILK STICHED**  
**DUPATTA - NET EMBROIDERY**

Ⓟ DRY CLEAN ONLY.  
ⓧ DO NOT USE ANY BLEACH OR STAIN REMOVING CHEMICAL.  
🧊 IRON THE FABRIC AT MODERATE TEMPERATURE.



**READYMAD**  
**#R-1113-BLEAK**



**TOP- ORGENZA EMBROIDERY**  
**BOTTOM- SILK STICHED**  
**DUPATTA - NET EMBROIDERY**

Ⓟ DRY CLEAN ONLY.  
ⓧ DO NOT USE ANY BLEACH OR STAIN REMOVING CHEMICAL.  
Ⓛ IRON THE FABRIC AT MODERATE TEMPERATURE.



**READYMAD  
COLLECTION**



**#R-1113-A**



**#R-1113-B**



**#R-1113-C**



**#R-1113-D**



**READYMAD**  
**COLLECTION**



**READYMAD**  
**#R-1113-CREAM**



**READYMAD**  
**#R-1113-BLEAK**



